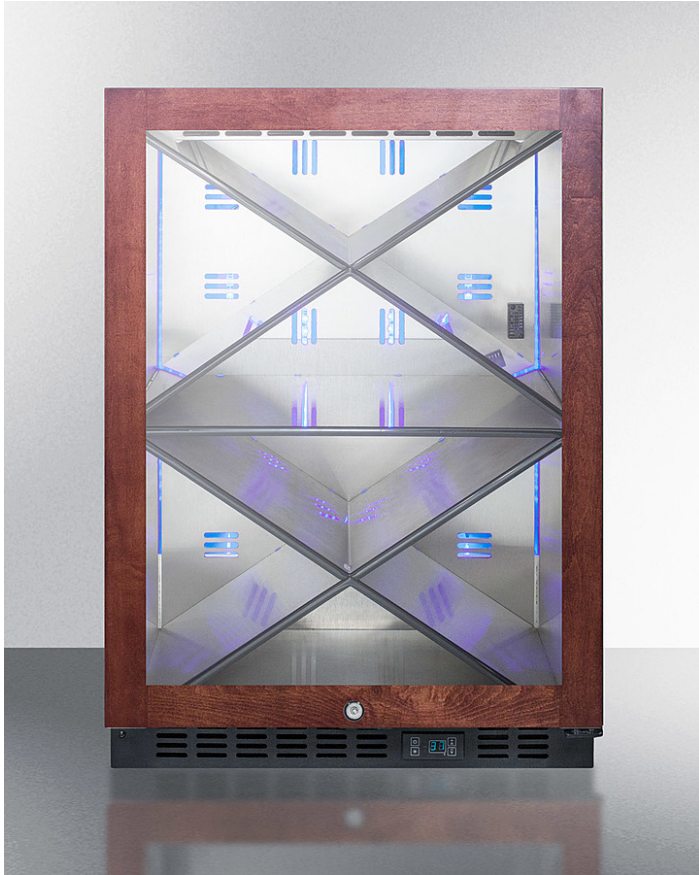


SCR610BLXPNR



34" x 23.63" x 23.5" (H x W x D)

Built-in undercounter commercially listed wine cellar with panel-ready door trim, stainless steel interior, diamond style shelving, digital controls, and black cabinet

Highlights:

ETL-S listed to NSF-7 commercial standards

Unique diamond style shelving in stainless steel brings an elevated presentation to commercial wine storage

Panel-ready door frame allows you to create a truly custom look under the counter

Product Features:

Commercially approved	ETL-S listed to NSF-7 Standards for use in commercial establishments
Built-in capable	Make the best use of space by installing this unit under the counter and flush with other cabinetry
Diamond style wine racks	Interior features stainless steel shelving in a unique diamond configuration for an elevated presentation
Panel-ready door trim	Door frame can be customized with a custom overlay panel (panel frame dimensions: 29 7/8" H x 23 1/8" W at 3/4" minimum thickness)
Rubberized safety trim	Each shelf features an industrial rubberized trim in a black finish, ensuring there are no sharp edges while providing a clean look
Interior LED lighting	Fully lit interior with a striking blue LED hue, providing an attractive and energy efficient view
Double pane tempered glass door	Stainless steel trimmed glass door offers a full display of stored items
Stainless steel interior	Walls are constructed from stainless steel for added strength and easy cleanup
Factory installed lock	Keyed lock for a secure interior

SCR610BLXPNR Specifications:

Overview	
Height of Cabinet	34.0" (86 cm)
Width	23.63" (60 cm)
Depth	23.5" (60 cm)
Depth with door at 90°	45.5" (116 cm)
Capacity	5.0 cu.ft. (142 L)
Bottles	40 bottles
Defrost Type	Automatic
Door	Glass/Panel-Ready Frame
Cabinet	Black
US Electrical Safety	ETL
Canadian Electrical Safety	ETL-C
Sanitation	ETL-S
Amps	0.8
Voltage/Frequency	115 V AC/60 Hz
Weight	160.0 lbs. (73 kg)
Shipping Weight	165.0 lbs. (75 kg)
Estimated Time to Ship	5 to 7 days
Parts & Labor Warranty	1 Year
Compressor Warranty	5 Years
Wine Cellar	
Number of Zones	1
Door Swing	RHD
Reversible	Factory Reversible
Shelf Type	Steel
Thermostat Type	Digital
Interior Light	Yes
Fan Type	Interior and Exterior
Refrigerant Type	R600a
Refrigerant Amount	0.99 oz.
High Side PSI	270.0
Low Side PSI	105.0
Interior Height 1	26.0" (66 cm)
Interior Width 1	19.38" (49 cm)
Interior Depth 1	12.25" (31 cm)
Temperature Range	36 to 68°F

Sound Level

