

## VELUX SUN TUNNEL Installation

### 1 Standing seam metal roof

**1**

Position the VELUX Sun Tunnel in the desired location and adjust if needed to provide at least 4" of room between the up stand in the metal roof and the sun tunnel.

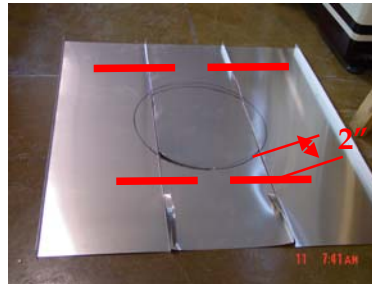
**2**

Mark the standing seams at the outside edges of Sun Tunnel flashings.

Mark the desired hole location using the inside of the flashing for a template.

**3**

Remove the flashing, cut and remove the standing seam part of the metal roof from two inches below the lower side of the circular arc and up to the top edge of the flashing.

**4**

Cut the circular hole in the metal roofing and the roof deck. Flatten the standing seam below the hole to the edge of the flashing. Angle the standing seam downward towards the center of the hole.

The metal roof and metal flashing need to be cleaned and free from dirt and oil.



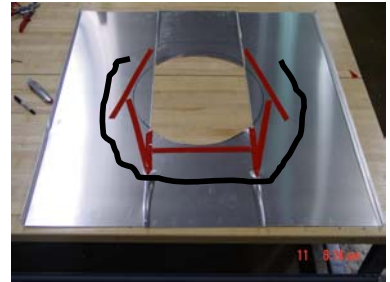
## VELUX SUN TUNNEL Installation

**5**

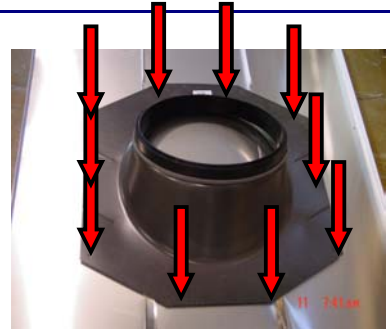
Reposition the flashing to check the alignment and mark the outside edges of the flashing. Then remove and apply a 3M 4991 VHB metal bonding closed cell acrylic foam double stick tape at least  $\frac{3}{4}$ " x .090".

**6**

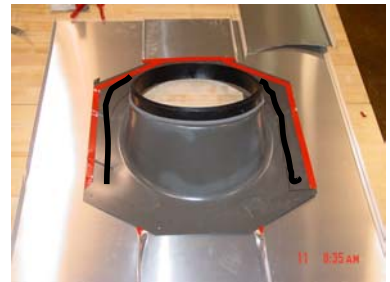
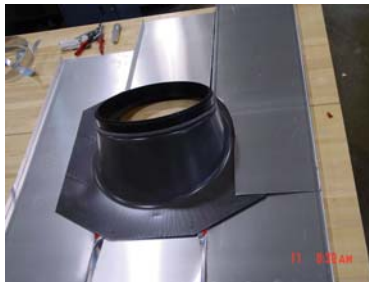
Apply a bead of Dow 1199 structural metal bonding sealant.

**7**

Reposition and fasten the flashing to the roof deck. Use metal roofing fasteners with rubber washers for all exposed fasteners. On the top and sides where the fasteners will be overlapped use a lower profile fastener and apply sealant.

**8**

Install correctly overlapping metal roofing panels over the top of the Sun Tunnel flashing. Dry fit the panels and then apply the double stick metal bonding tape and structural sealant to the areas shown.



## VELUX SUN TUNNEL Installation

### 9 Standing seam metal roof

Remove the backing from the foam tape and position and fasten the roofing panels. Secure around sun tunnels to create a water tight joint. Install standing seam caps as directed by metal roofing supplier.



These instructions are used for pre approved standing seam metal roofing project sites. Please contact VELUX for more information.