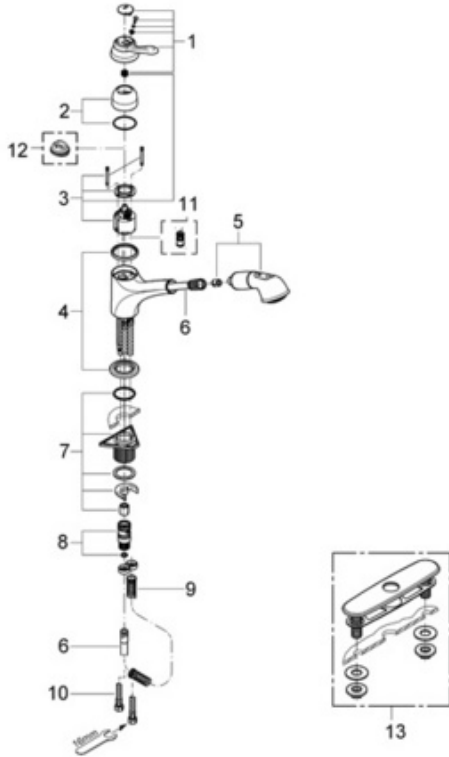


Ashford 32 459 Dual Spray Pull-Out

Exploded View



Parts Breakdown

Pos No.	Spare Part Description	Product No.	Pcs.
	32 459		
1	Lever	46 554	1
2	Cap	46 555	1
3	Ceramic cartridge	46 048	1
4	Spout decorative rings	46 556	1
5	Hand spray	12 475	1
6	Spray hose	46 092	1
7	Mounting kit	46 346	1
8	Quick coupling	46 315	1
9	Pressure spring	07 240	1
10	Flexible connect hose	46 413	1
11	Vacuum breaker	46 137	1
12	Temperature limiter (20°C)	46 308	1
	Special Accessories		
	10" Euro escutcheon	07 552	1