

<b>CATALOG NUMBER</b>	<b>TYPE</b>
<b>PROJECT</b>	

**120V TRACK ACCESSORIES**

**"H" Track Connectors**

**3 Wire Flexible Connector**

MODEL	FINISHES			
HFLX	BK	WT	BN	DB

Example (Model-Finish): HFLX-WT

**Description** Connects two "HT" tracks at variable angles, from 60° to 180°. Used to make the transition from wall to ceiling, and is a power entry point. Accepts wires from above the ceiling, with knock out for trade size connector.

**Dimensions** 9 3/4"

**Finish** BK - Black  
WT - White  
BN – Brushed Nickel  
DB – Dark Bronze

**Listing** UL & CUL Listed. 5 year WAC Lighting product warranty.



**3 Wire "L" Connector**

MODEL	POLARITY TURNS	FINISHES			
HL	LEFT RIGHT	BK	WT	BN	DB

Example (Model-Finish): HL-LEFT-BK

**Description** Connects two "HT" tracks at a 90° angle (HL-LEFT make left-hand-polarity turns & HL-RIGHT make right-hand-polarity turns), and is a power entry point. Accepts wires from above the ceiling, with knock out for trade size connector.

**Dimensions** 4 1/4" x 4 1/4"

**Finish** BK - Black  
WT - White  
BN – Brushed Nickel  
DB – Dark Bronze

**Listing** UL & CUL Listed. 5 year WAC Lighting product warranty.



**3 Wire "T" Connector**

MODEL	FINISHES			
HT	BK	WT	BN	DB

Example (Model-Finish): HT-WT

**Description** Connects three "HT" tracks at 90° angles, and is a power entry point. Accepts wires from above the ceiling, with knock out for trade size connector.

**Dimensions** 7 1/4" x 4 1/4"

**Finish** BK - Black  
WT - White  
BN – Brushed Nickel  
DB – Dark Bronze

**Listing** UL & CUL Listed. 5 year WAC Lighting product warranty.



**3 Wire "X" Connector**

MODEL	FINISHES			
HX	BK	WT	BN	DB

Example (Model-Finish): HX-WT

**Description** Connects four "HT" tracks at 90° angles, and is a power entry point. Accepts wires from above the ceiling, with knock out for trade size connector.

**Dimensions** 7 1/8" x 7 1/8"

**Finish** BK - Black  
WT - White  
BN – Brushed Nickel  
DB – Dark Bronze

**Listing** UL & CUL Listed. 5 year WAC Lighting product warranty.



**120V TRACK ACCESSORIES**

**“J” Track Connectors**

**Wide 2-Wire Flexible Connector**

MODEL	FINISHES			
<b>JFLX</b>	<b>BK</b>	<b>WT</b>	<b>BN</b>	<b>DB</b>

Example (Model-Finish): JFLX-WT

**Description** Connects two “JT” tracks at variable angles, from 60° to 180°. Used to make the transition from wall to ceiling, and is a power entry point. Accepts wires from above the ceiling, with knock out for trade size connector.

**Dimensions** 8 1/2"

**Finish** BK - Black  
WT - White  
BN – Brushed Nickel  
DB – Dark Bronze

**Listing** UL & CUL Listed. 5 year WAC Lighting product warranty.



**Wide 2-Wire “L” Connector**

MODEL	POLARITY TURNS	FINISHES			
<b>JL</b>	<b>LEFT RIGHT</b>	<b>BK</b>	<b>WT</b>	<b>BN</b>	<b>DB</b>

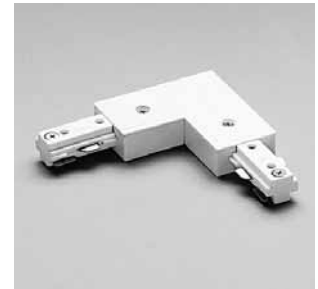
Example (Model-Finish): JL-LEFT-BK

**Description** Connects two “JT” tracks at a 90° angle (**JL-LEFT** make left-hand-polarity turns & **JL-RIGHT** make right-hand-polarity turns) and is a power entry point. Accepts wires from above the ceiling, with knock out for trade size connector.

**Dimensions** 4 1/4" x 4 1/4"

**Finish** BK - Black  
WT - White  
BN – Brushed Nickel  
DB – Dark Bronze

**Listing** UL & CUL Listed. 5 year WAC Lighting product warranty.



**Wide 2-Wire “T” Connector**

MODEL	FINISHES			
<b>JT</b>	<b>BK</b>	<b>WT</b>	<b>BN</b>	<b>DB</b>

Example (Model-Finish): JT-DB

**Description** Connects three “JT” tracks at 90° angles, and is not power feedable.

**Dimensions** 7 1/8" x 4 1/4"

**Finish** BK - Black  
WT - White  
BN – Brushed Nickel  
DB – Dark Bronze

**Listing** UL & CUL Listed. 5 year WAC Lighting product warranty.



**Wide 2-Wire “X” Connector**

MODEL	FINISHES			
<b>JX</b>	<b>BK</b>	<b>WT</b>	<b>BN</b>	<b>DB</b>

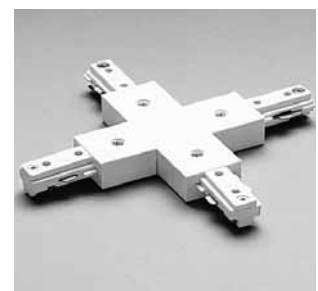
Example (Model-Finish): JX-WT

**Description** Connects four “JT” tracks at 90° angles, and is not power feedable

**Dimensions** 7 1/8" x 7 1/8"

**Finish** BK - Black  
WT - White  
BN – Brushed Nickel  
DB – Dark Bronze

**Listing** UL & CUL Listed. 5 year WAC Lighting product warranty.



<b>CATALOG NUMBER</b>	<b>TYPE</b>
<b>PROJECT</b>	

**120V TRACK ACCESSORIES**

**“L” Track Connectors**

**2 Wire Flexible Connector**

MODEL	FINISHES			
LFLX	BK	WT	BN	DB

Example (Model-Finish): LFLX-DB

**Description** Connects two “LT” tracks at variable angles, from 60° to 180°. Used to make the transition from wall to ceiling, and is a power entry point. Accepts wires from above the ceiling, with knock out for trade size connector.

**Dimensions** 11”

**Finish** BK - Black  
WT - White  
BN – Brushed Nickel  
DB – Dark Bronze

**Listing** UL & CUL Listed. 5 year WAC Lighting product warranty.



**2 Wire “L” Connector**

MODEL	POLARITY TURNS	FINISHES			
LL	LEFT RIGHT	BK	WT	BN	DB

Example (Model-Finish): LL-RIGHT-DB

**Description** Connects two “LT” tracks at a 90° angle (LL-LEFT make left-hand-polarity turns & LL-RIGHT make right-hand-polarity turns),, and is a power entry point. Accepts wires from above the ceiling, with knock out for trade size connector

**Dimensions** 2 3/4" x 2 3/4"

**Finish** BK - Black  
WT - White  
BN – Brushed Nickel  
DB – Dark Bronze

**Listing** UL & CUL Listed. 5 year WAC Lighting product warranty.



**2 Wire “T” Connector**

MODEL	FINISHES			
LT	BK	WT	BN	DB

Example (Model-Finish): LT-BK

**Description** Connects three “LT” tracks at 90° angles, and is a power entry point. Accepts wires from above the ceiling, with knock out for trade size connector.

**Dimensions** 4” x 2 3/4”

**Finish** BK - Black  
WT - White  
BN – Brushed Nickel  
DB – Dark Bronze

**Listing** UL & CUL Listed. 5 year WAC Lighting product warranty.



**2 Wire “X” Connector**

MODEL	FINISHES			
LX	BK	WT	BN	DB

Example (Model-Finish): LX-WT

**Description** Connects four “LT” tracks at 90° angles, and is a power entry point. Accepts wires from above the ceiling, with knock out for trade size connector.

**Dimensions** 4 1/8” x 4 1/8”

**Finish** BK - Black  
WT - White  
BN – Brushed Nickel  
DB – Dark Bronze

**Listing** UL & CUL Listed. 5 year WAC Lighting product warranty.

