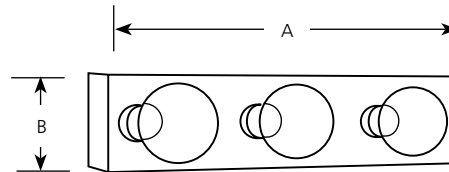


Type \_\_\_\_\_  
 -10 -15 -30  
 P3333

Catalog No.	Finish			Lamping	Dimensions (Inches)	
	Polished Brass	Polished Chrome	White		A	B
P3333	-10	-15	-30	3 (m) 60w	18	4-1/4



**Specifications:**

General

- Polished Brass (-10), Polished Chrome (-15) and White (-30) face plates available
- Steel construction
- Sockets are covered with matching socket cups
- Socket spacing is 6" on centers
- Medium based G lamps recommended

Mounting

- Wall mount
- Ceiling mount only with 25 watt lamps
- Full length back plate covers outlet box
- Unit can be direct wired without outlet box

Electrical

- Medium based phenolic sockets
- Pre-wired with sockets in place

Labeling

- UL-CUL listed



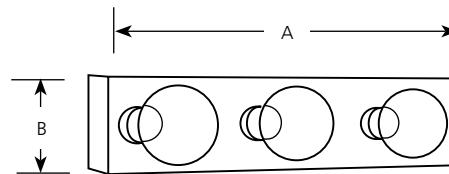
Incandescent

**Deluxe Broadway Lights**  
Aluminum Construction

**Bath & Vanity**

Type \_\_\_\_\_  
-15AL  
P3333

Catalog No.	Finish	Lamping	Dimensions (Inches)	
	Polished Chrome		A	B
P3333	-15AL	3 (m) 60w	18	4-1/4



**Specifications:**

General

- Polished Chrome (-15) is a plated finish
- Aluminum face plate
- Sockets are covered with matching aluminum socket cups
- Back plate is protected steel
- Socket spacing is 6" on centers
- Medium based G lamps recommended

Electrical

- Medium based phenolic sockets
- Pre-wired with sockets in place

Labeling

- UL-CUL listed

Mounting

- Wall mounted
- Ceiling mount only using 25 watt lamps
- Full length back plate covers a standard 4" recessed octagonal outlet box
- Unit can be direct wired without an outlet box

Progress Lighting  
701 Millenium Blvd.  
Greenville, South Carolina  
29607

www.progresslighting.com

Rev. 2/09