

FEATURED MODEL

440954 Single Lever Bar, SATIN NICKEL

ADDITIONAL MODELS

440953 Single Lever Bar, CHROME

FEATURES

- Solid brass body
- Ceramic disk cartridge
- Extra long supply lines
- 2.2 GPM flow rate
- Installation in a 1-3/8" hole
- Color coded hot and cold supply lines
- 360 degree spout swivel
- 3-1/4" backsplash clearance off center
- 1-3/4" maximum deck thickness

OPTIONAL ACCESSORIES

Meridian Soap Dispenser: 440058 (Satin Nickel)

CODE/STANDARDS COMPLIANCE

ASME A112.18.1-2011

IAPMO listed

CMR 248 - MA

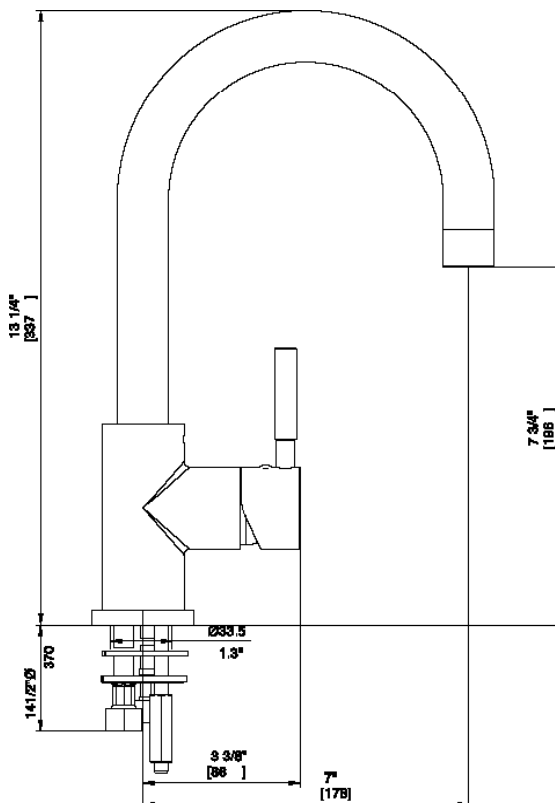
AB1953 Lead Free



Model 440954 shown

NOMINAL DIMENSIONS

REACH	SPOUT HEIGHT	FAUCET HEIGHT
7"	7-3/4"	13-1/4"



See next page for exploded parts drawing and parts list.

WARRANTY

BLANCO'S kitchen and bar faucets feature a LIMITED LIFETIME WARRANTY to be free of all manufacturing defects under normal use. See our complete warranty for details.

While BLANCO endeavors to provide accurate information, all dimensions are nominal, cannot be guaranteed, and are subject to change or cancellation. BLANCO assumes no responsibility for use of superseded or voided specifications.

JOB INFORMATION

Job Name: _____

Contact: _____

Date Specified: _____

Specifier: _____

Contractor: _____

BLANCO AMERICA

800.451.5782

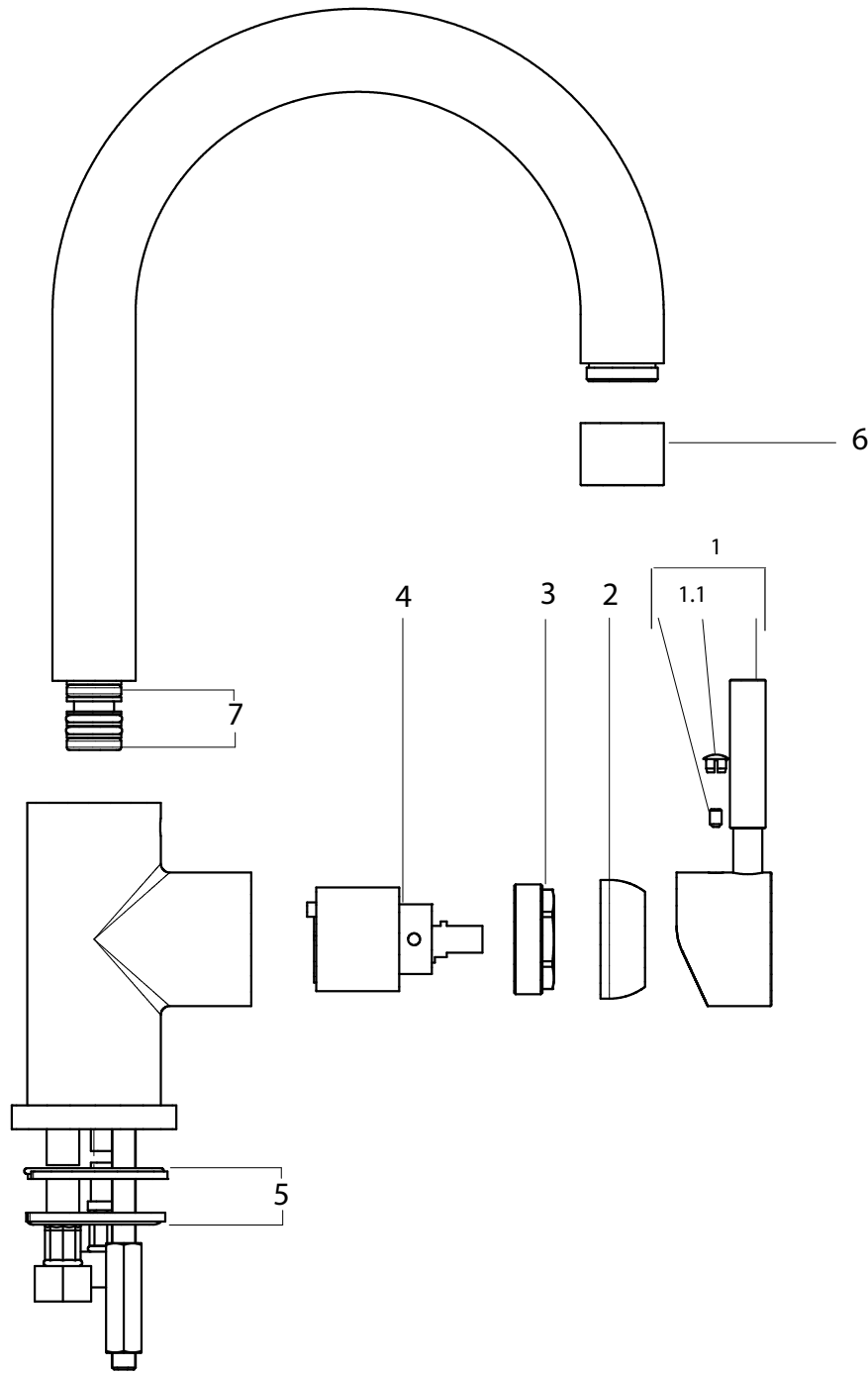
www.blancoamerica.com

© 2013 BLANCO AMERICA

11/14

SPEC-004

Old Model #: 157-105-ST



REPAIR PART GUIDE		
Num.	Description	Part #
1, 1.1	Handle, screw & cap - Satin Nickel	441776
1.1	Handle - Screw and Cap only	441778
2	Cartridge - Cap	441779
3	Cartridge Lock Nut	441781
4	Cartridge	440750
5	Mounting nut assembly	441782
6	Aerator	441783
7	Ring set	441785

Need to Change a Faucet Cartridge?



Scan this QR code
to see our how-to video

For faucet technical support or questions,
 please e-mail us at faucets@blancoamerica.com