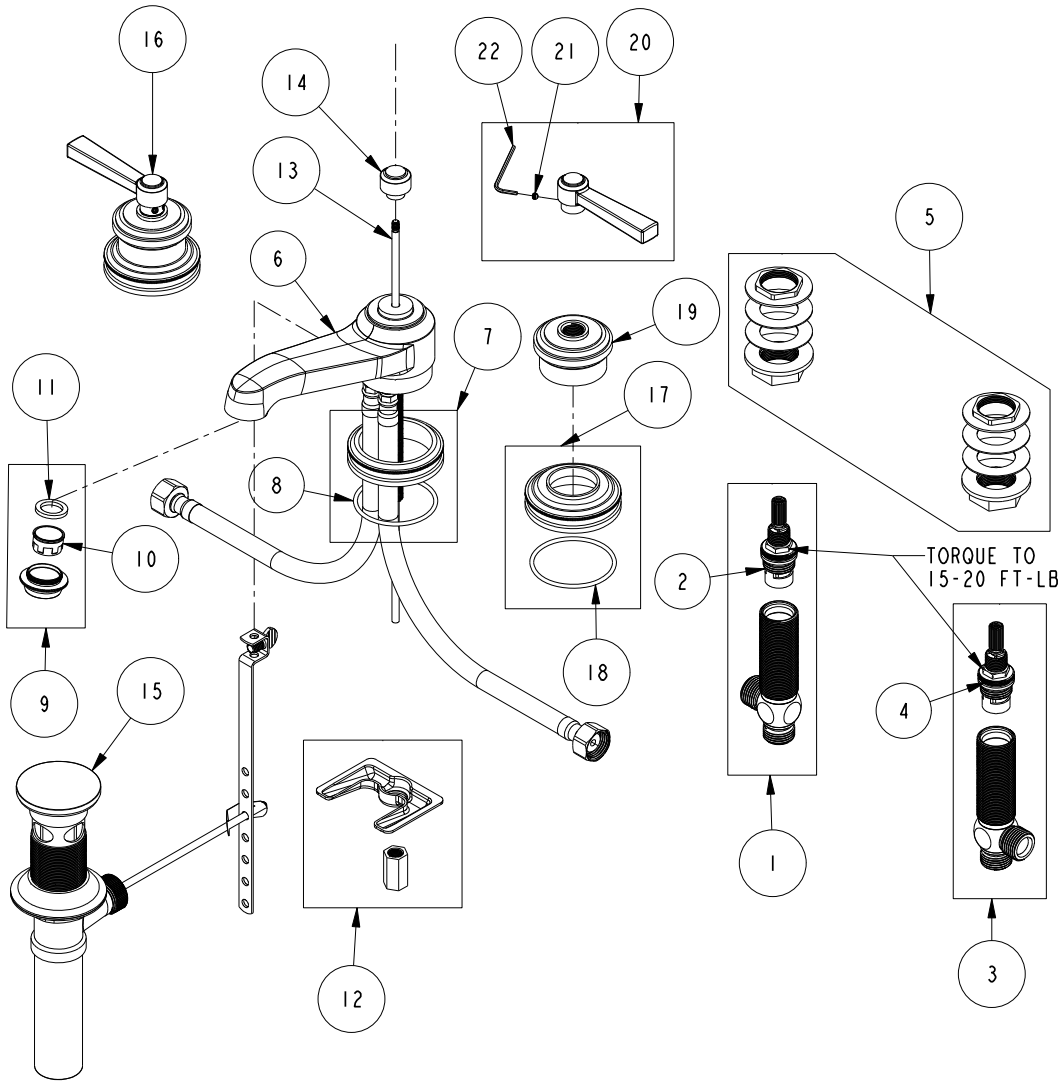


REPLACEMENT PARTS



ITEM	PT/ASSY	SPECIFY FINISH	DESCRIPTION
1	1-527		W/S CART/BODY ASM (HOT)
2	1-002		W/S CARTRIDGE - HOT
3	1-526		W/S CART/BODY ASM (COLD)
4	1-001		W/S CARTRIDGE - COLD
5	1-027		WIDE SPREAD MOUNTING HARDWARE
6	3-340	YES	W/S SPOUT ASM
7	20-736	YES	ESCUTCHEON ASM
8	91753		O-RING, # 2-136, EP, 50 DURO - GREY
9	2-628	YES	AERATOR ASM
10	12404		AERATOR INSERT, STD SIZE, 1.2 GPM
11	91014		WSHR, .59 ID X .84 OD X .095 THK, FLT, RUBBER NSF 61
12	1-514		SPOUT MOUNTING KIT ASM
13	10288	YES	3/16" POP UP ROD
14	11092		POP UP KNOB
15	325	YES	POP UP ASSEMBLY
16	3-279	YES	LEVER HANDLE/ESCUTCHEON ASM
17	20-737	YES	ESCUTCHEON ASM
18	91752		O-RING, #2- 137, EPDM, 50 DURO
19	11089		HANDLE BONNET
20	2-436	YES	LEVER HANDLE ASM
21	92000		SCREW 8 - 32 X 1/8 SS
22	10192		HEX KEY TOOL, #8 5/64

W/S FAUCET
1620

REV E EN-4585-2 03/31/23 APPROVED RS

NEWPORT BRASS.

t: 949.417.5207 | www.newportbrass.com