



INSTALLATION INSTRUCTIONS FOR THE MODEL 830-AA SERVICE SINK WITH INTEGRAL VACUUM BREAKER

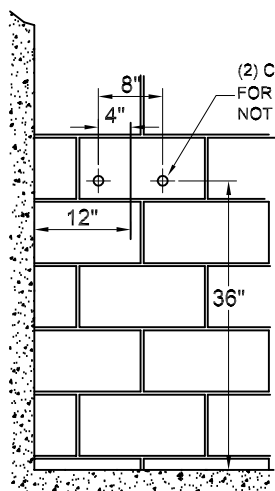


Fig. 1

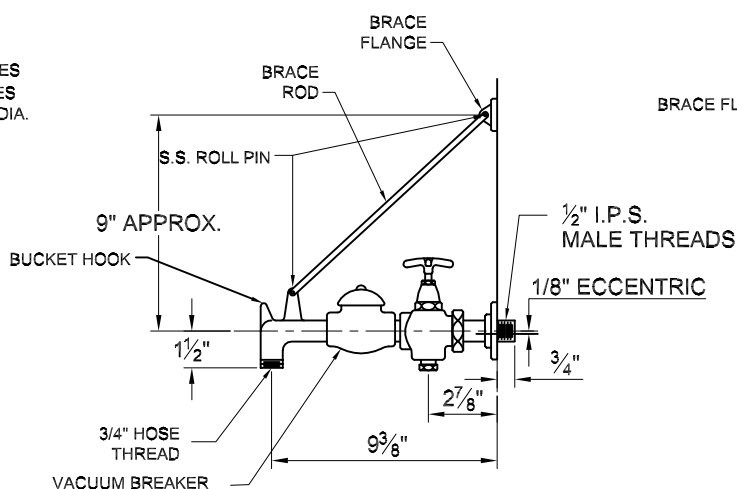


Fig. 2

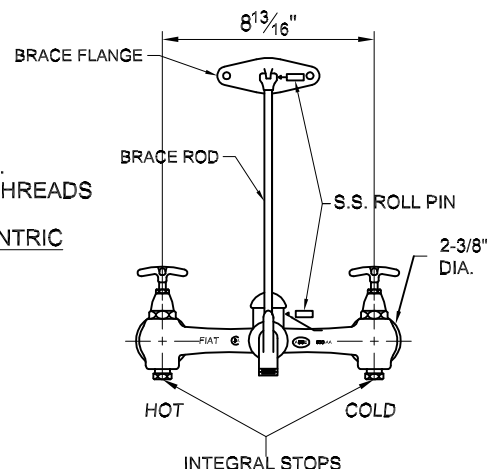


Fig. 3

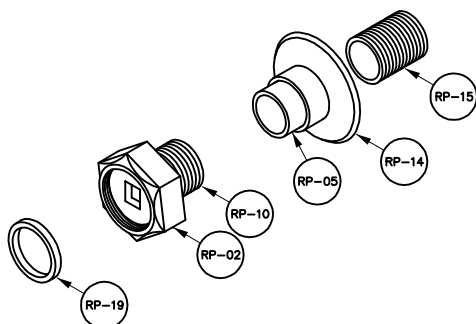


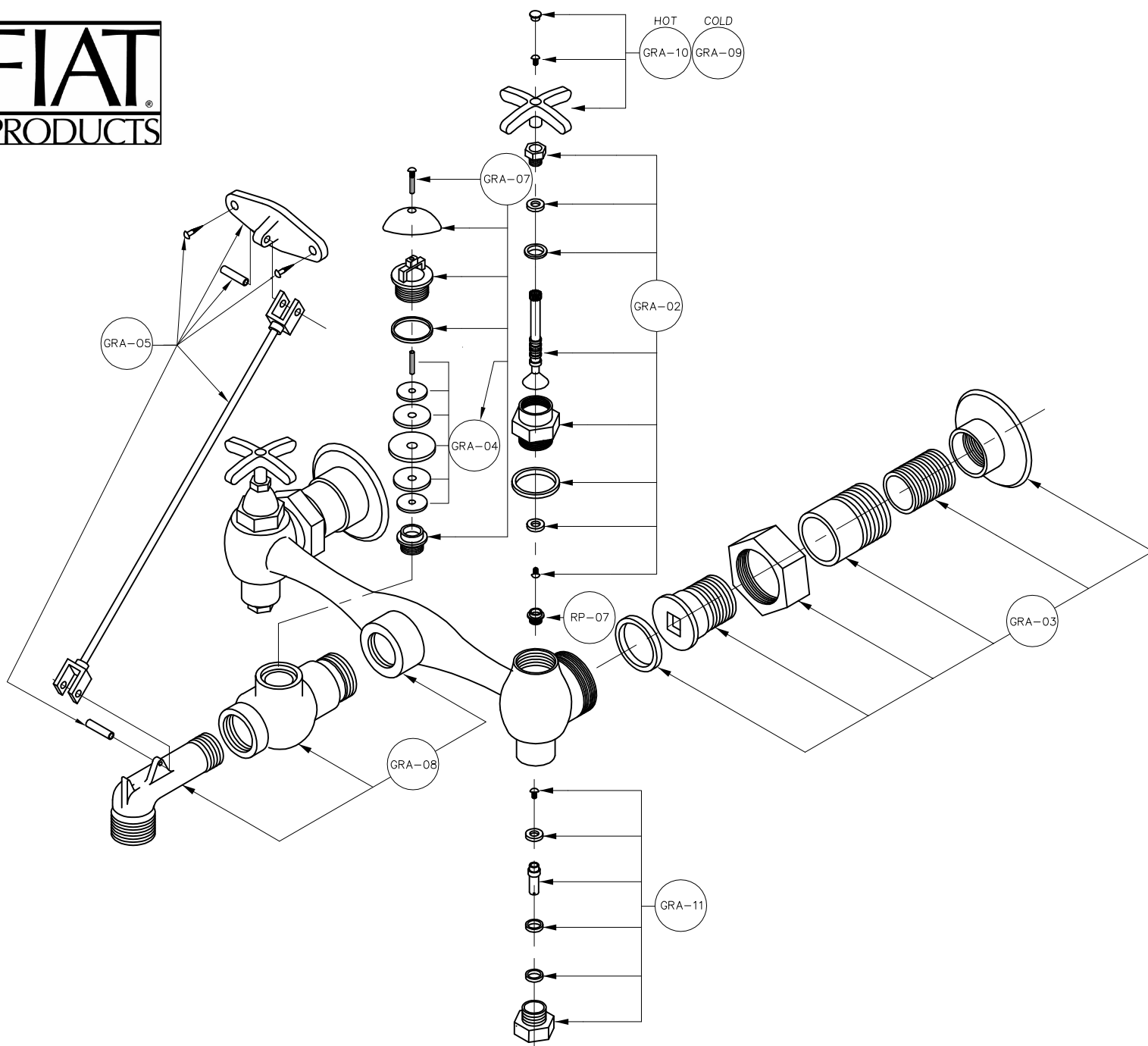
Fig. 4

INSTALLATION INSTRUCTIONS

1. Unpack the valve and check for any damage that may have occurred during shipment.
2. Drill the supply holes for the hot and cold sides of the valve as per Fig. 1
3. Remove RP-02, RP-10, and RP-19 from the hot and cold sides of the valve and assemble as shown in Fig. 4 and place onto supply pipe for hot and cold water.
4. Once Step 3 is complete attach the valve to RP-02. NOTE: If RP-19 is not placed as shown in Fig. 4 the connection will leak.
5. Attach Brace Rod to nozzle with S.S. roll pin. Once this is completed, attach the Brace Flange to Brace Rod with S.S. roll pin. Position the Brace Flange against the wall and mark two hole locations for the Brace Flange holes and secure the Brace Flange to the wall.

FIAT CUSTOMER SERVICE
UNITED STATES
1-800-442-1902
www.fiatproducts.com

FIAT CUSTOMER SERVICE
CANADA
1-800-387-0369
www.fiat.ca



GROUP RELACEMENT ASSEMBLY PARTS LIST

GRA-02 HANDLE MOUNTING GROUP ASSEMBLY

SPINDLE
SEAT WASHER
SEAT WASHER SCREW
PACKING NUT
BRASS WASHER
PACKING
HANDLE HUB
HUB WASHER

GRA-03 COUPLING ASSEMBLY

COUPLING NUT
BUSHING(SOCKET)
SWIVEL
WALL FLANGE
WASHER
NIPPLE

GRA-05 BRACE ASSEMBLY

WOOD SCREW (2)
BRACE FLANGE
S.S. ROLL PIN (2)
WALL BRACE ROD

GRA-07 VACUUM BREAKER ASSEMBLY

SEAT
V.B. HUB
CAP

V.B. HUB WASHER
V.B. CAP SCREW
GRA-04 ASSEMBLY

GRA-08 BODY ASSEMBLY

NOZZLE
CENTER BODY
V.B. BODY

GRA-09 COLD HANDLE ASSEMBLY

HANDLE
HANDLE SCREW
COLD INDEX

GRA-10 HOT HANDLE ASSEMBLY

HANDLE
HANDLE SCREW
HOT INDEX

GRA-11 INTEGRAL STOP ASSEMBLY

SPINDLE
BRASS WASHER
WASHER
PACKING NUT
SEAT WASHER SCREW
PACKING

RP-07 SEAT