



Model 118120

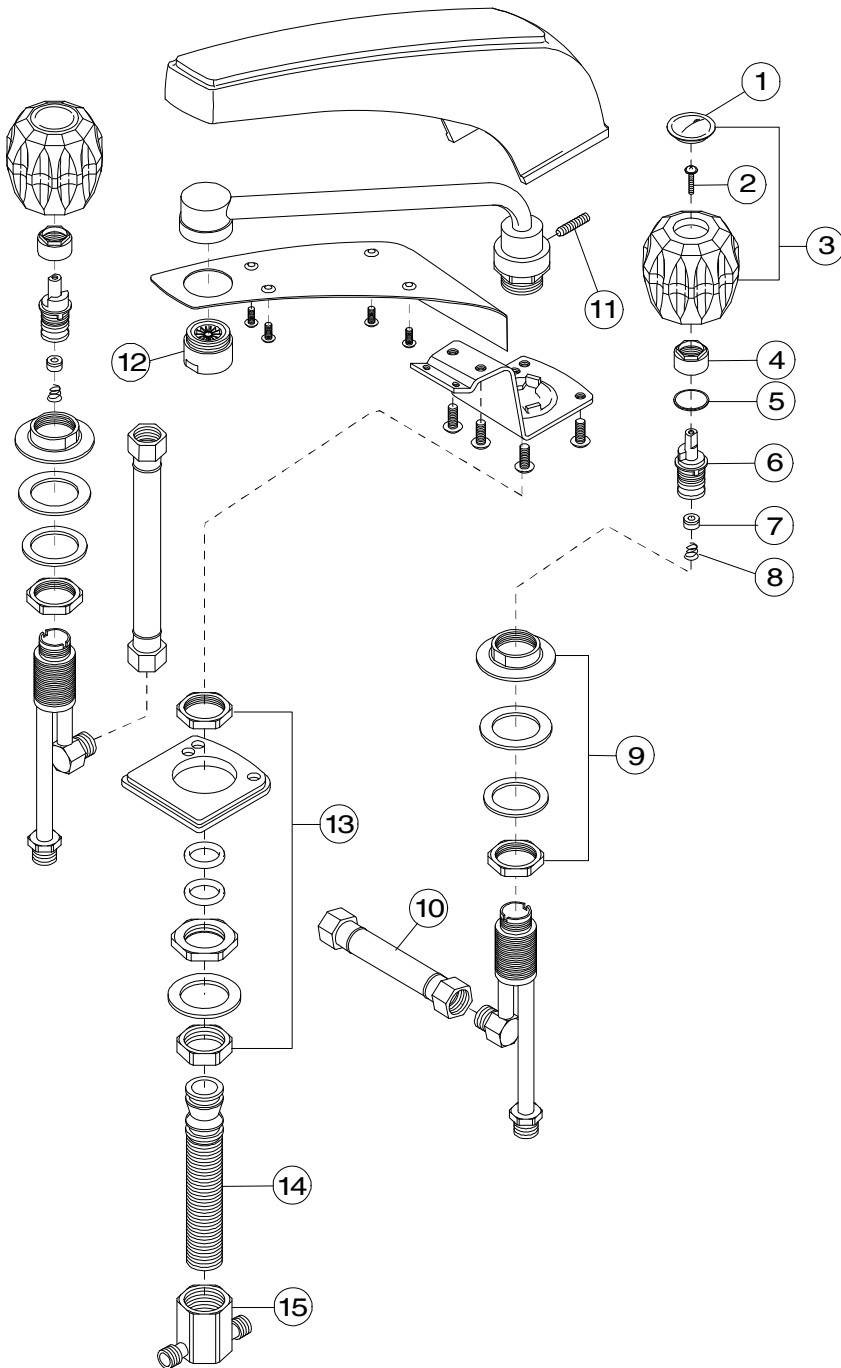
Twin Acrylic Handle Widespread Roman Tub Valve
Chrome Plated Finish
1/2" IPS Connection

CONCORD™



Model 118120

Refer to Premier Faucet Parts List Sheet for part numbers and ordering information.



For additional information contact Premier Faucet at 866-745-4010 or visit our website at www.premierfaucet.com

**Model 118120**

Twin Acrylic Handle Widespread Roman Tub Valve
Chrome Plated Finish
1/2" IPS Connection

CONCORD™

Model 118120

Refer to Premier Faucet Parts Schematic Sheet for parts diagram.

| INDEX | DESCRIPTION | MATERIAL | QTY | PART NO |
|-------|--------------------------|-----------------|-----|---------|
| 1 | INDEX BUTTON | ACRYLIC | 2 | 994200 |
| 2 | HANDLE SCREW | BRASS | 2 | 994187 |
| 3 | HANDLE ASSEMBLY | ACRYLIC | 2 | 994126 |
| 4 | BONNET NUT | ZINC | 2 | 994316 |
| 5 | CAP GASKET | POM | 2 | 994515 |
| 6 | CARTRIDGE - HOT & COLD | PLASTIC | 2 | 163420 |
| 7 | SEAT WASHER | RUBBER | 2 | 133398 |
| 8 | SPRING | STAINLESS STEEL | 2 | 133400 |
| 9 | DECK ESCUTCHEON ASSY | BRASS | 2 | 994401 |
| 10 | HOSE | PVC | 2 | 994557 |
| 11 | FIXTURE SCREW | STAINLESS STEEL | 1 | 994614 |
| 12 | FLOW CONDITIONER | BRASS | 1 | 994513 |
| 13 | INSTALLATION KIT | BRASS | 2 | 994260 |
| 14 | SPOUT RISER WITH O-RINGS | BRASS | 1 | 994510 |
| 15 | TEE CONNECTOR ASSY | BRASS | 1 | 994592 |