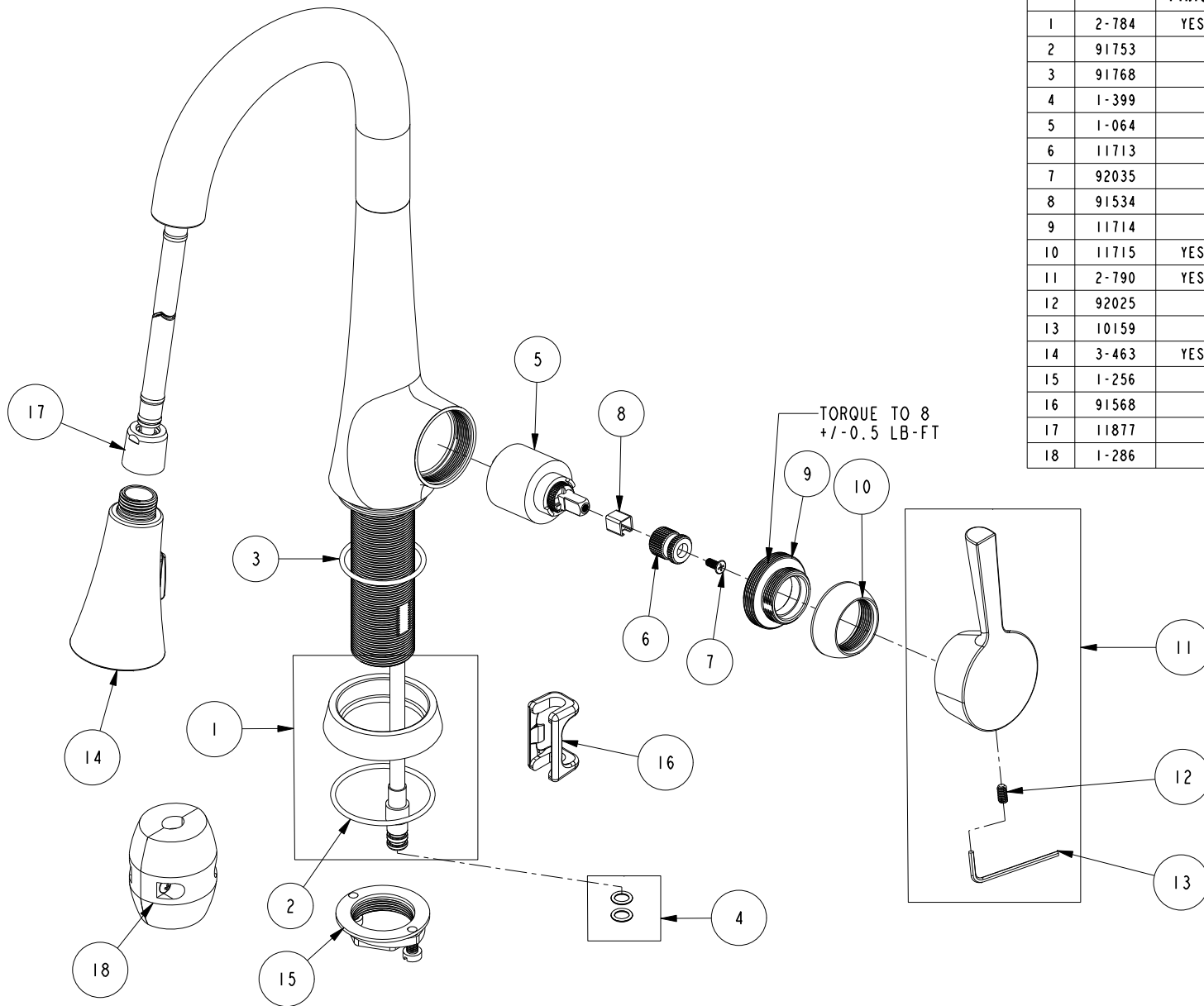


REPLACEMENT PARTS



ITEM	PT/ASSY	SPECIFY FINISH	DESCRIPTION
1	2-784	YES	BASE RING ASM
2	91753		O-RING, # 2-136, EP, 50 DURO - GREY
3	91768		O-RING, #2-130, EP, 50 DURO - GREY
4	1-399		O-RING KIT FOR SPOUT PEX CONECTION
5	1-064		SINGLE LEVER CARTRIDGE
6	11713		CARTRIDGE STEM ADAPTER
7	92035		SCRW, M4 X .7 X 10 PHL FLT HD SS
8	91534		CARTRIDGE STEM INSERT
9	11714		CARTRIDGE RETAINER
10	11715	YES	CARTRIDGE CAP
11	2-790	YES	HANDLE ASM
12	92025		SCRW, 10-24 X 3/8 SKT HD CUP PT SS
13	10159		HEX KEY, 3/32 ALLOY STEEL
14	3-463	YES	SPRAY HEAD, VESPERA
15	1-256		MOUNTING KIT
16	91568		RETAINER CLIP
17	11877		HOSE, PULLDOWN SWIVEL
18	1-286		WEIGHT ASM

VESPERA PULL DOWN - BAR / PREP FAUCET
2500-5223

REV K EN-4646 05/09/23 APPROVED RS

NEWPORT BRASS.

t: 949.417.5207 | www.newportbrass.com