

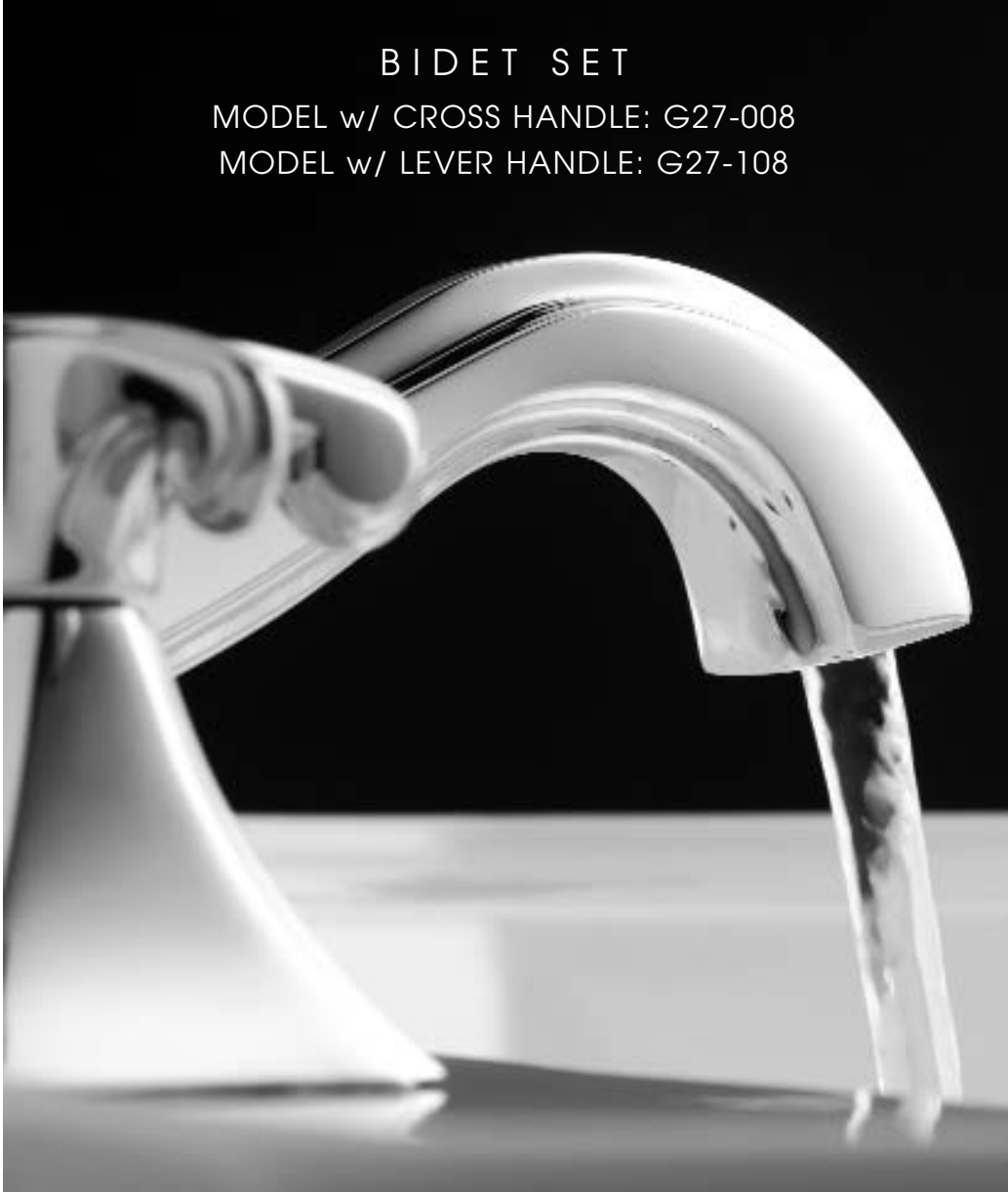
# CIRCE™

## INSTALLATION INSTRUCTIONS

### BIDET SET

MODEL w/ CROSS HANDLE: G27-008

MODEL w/ LEVER HANDLE: G27-108



COMPLEMENT THIS PRODUCT WITH THESE  
COORDINATING ACCESSORIES:

sconce lights • mirrors • towel bars and rings • toiletry shelves and trays  
toilet tissue holders • robe hooks • hotel shelves • grab bars  
soap dishes and dispensers • tumblers • toothbrush holders • curtain rod holders

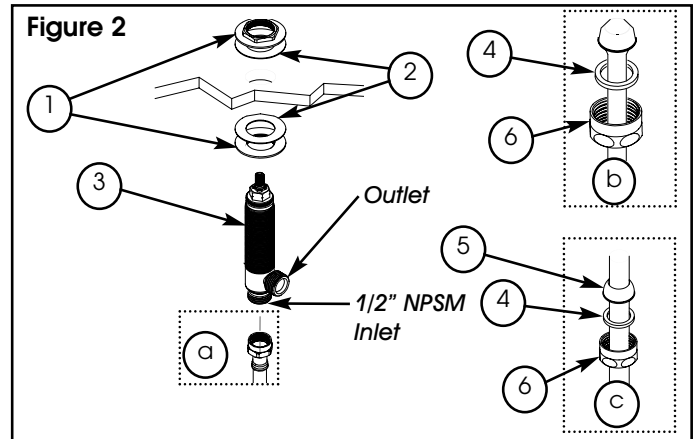
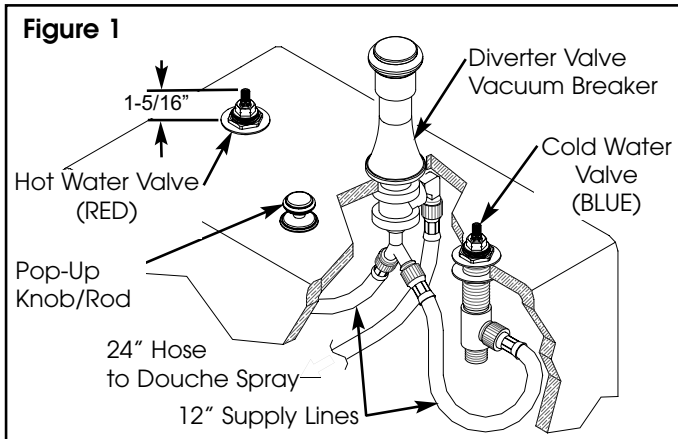
# GINGER®

US D521,606 S. US D522,103 S. US D523,525 S.

## Installing Hot & Cold Valves

The blue marked valve goes into the right side hole, the red marked valve goes into the left side hole. See Figure 1.

- Place flange NUT (1) and WASHER (2) on valve BODY (3).
- Insert valve BODY (3) from underside through hole in mounting surface at rear of bidet. Adjust valve height to approximately 1-5/16" above mounting surface.
- Using NUT (1) and WASHER (2) secure valve BODY (3) in place. See Figure 2.

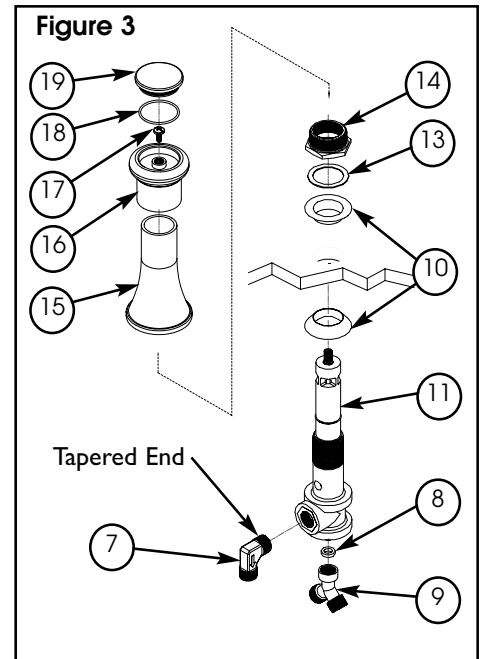
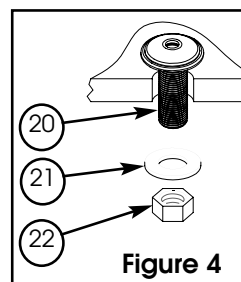


## Installing Diverter Valve / Vacuum Breaker

- If unassembled, apply thread sealant to tapered end of ELBOW (7) and connect to side outlet of diverter VALVE (11).
- Place rubber WASHER (8) into "Y" (9) fitting and hand tighten to base of VALVE (11), over tightening may damage WASHER (8) and affect flow.
- Slide one rubber WASHER (10) down onto VALVE (11) base.
- Insert VALVE (11) from underside, through center valve hole at rear of bidet, from topline place rubber WASHER (10), nylon WASHER (13) and securely tighten with mounting NUT (14).
- Thread Escutcheon (15) onto mounting NUT (14)
- Place HANDLE (16) onto VALVE (11) stem and secure into place with SCREW (17). Install CAP (19) with O-RING (18) onto HANDLE (16). See Figure 3.
- Connect large end of 12" supply lines to side outlet of hot and cold valves and attach small end to "Y" (9) fitting. See Figure 1.

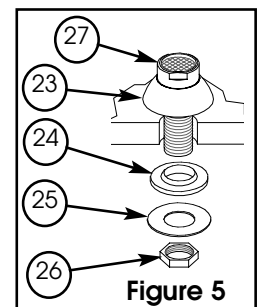
## Install Pop-Up Rod Guide

- Apply a small amount of clear silicon to underside of decorative FLANGE (20) and insert through appropriate bidet hole.
- From underside, slide steel WASHER (21) onto flange NIPPLE (20) and secure in place with NUT (22). See Figure 4.



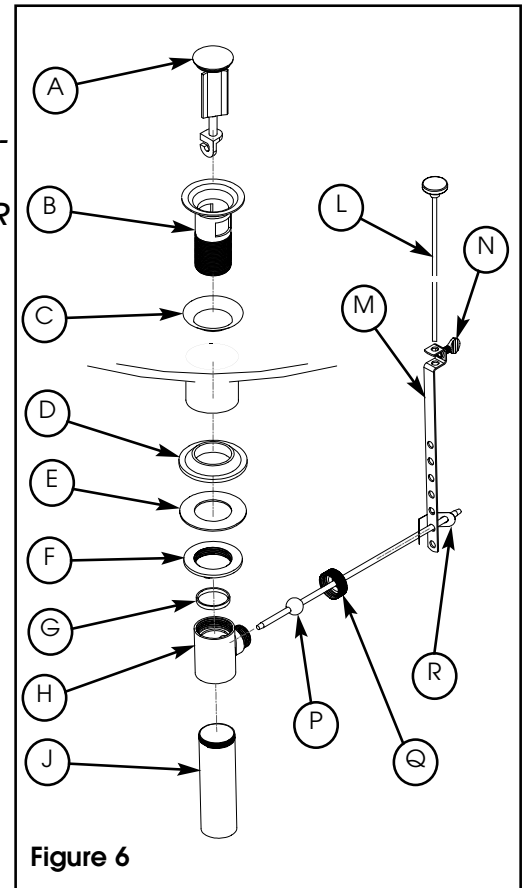
## Installing Douche Spray Fitting

- Apply clear silicon to underside of douche spray BODY (23) and insert through appropriate bowl opening.
- Slide rubber WASHER (24) and steel WASHER (25) onto spray BODY (23) from underside and tighten NUT (26) firmly to achieve water-tight seal. See Figure 5.
- Attach end of 24" hose from diverter ELBOW (7) to spray BODY (23). See Figure 1.



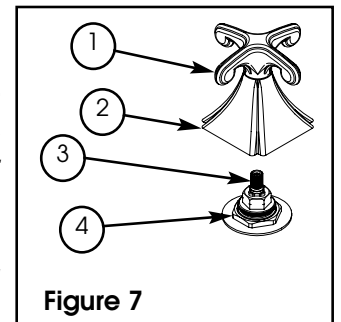
## Installing Drain Components

- Remove drain **PLUG (A)** from **FLANGE (B)**.
- Place **FLANGE (B)** and white **WASHER (C)** through sink drain opening. (Clear silicone may be used in place of white washer.)
- From bottom side of sink, place cone shaped rubber **WASHER (D)** onto **FLANGE (B)** and slide up against sink bottom. Note: Cone portion of **WASHER (D)** to face upward.
- Slide on clear flat **WASHER (E)** and secure with flange **NUT (F)**.
- Place clear **WASHER (G)** into drain **BODY (H)** and tighten to **FLANGE (B)**.
- Apply thread sealant to **TAILPIECE (J)** and attach to drain **BODY (H)**.
- Attach **TAILPIECE (J)** to p-trap drain (not included).
- Place drain **PLUG (A)** into **FLANGE (B)**.
- Insert pop-up **ROD (L)** through rod opening and secure to **STRAP (M)**, approximately 1" from end of **ROD (L)**, with **SCREW (N)**.
- Insert ball **ROD (P)** into the drain's rod opening, secure with ball rod **NUT (Q)**.
- Adjust the rise of the plunger and **CLIP (R)** into place.
- Adjust ball **ROD (P)** and pop-up **ROD (L)** so drain will open and close properly. See Figure 6.
- Connect **TAILPIECE (J)** to waste p-trap (not included).



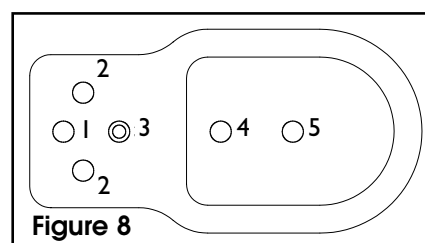
## Finish Trim

- Secure **HANDLE (1)** into place by first engaging the **STEM (3)** and then threading **ESCUTCHEON (2)** onto **CARTRIDGE (4)**. Any adjustments for rotational alignment must be made to the valve body, not to the **CARTRIDGE (4)**. (Cartridge Bonnet factory torque is 14-16 ft-lbs.) See Figure 7.
- Attach hot/cold water supply to appropriate 1/2" NPSM valve **BODY (4)**, utilizing one of the three following types of risers. Supply risers not included. See Figure 2.
  - a. 1/2" IPS flexible riser: discard rubber nosecone **WASHER (5)**, friction **WASHER (4)** and coupling **NUT (6)**.
  - b. 3/8" or 1/2" OD bullnose riser: utilize friction **WASHER (4)** and coupling **NUT (6)**.
  - c. 1/2" copper riser: utilize rubber nosecone **WASHER (5)**, friction **WASHER (4)** and coupling **NUT (6)**.
- Remove **AERATOR (27)** from douche spray **BODY (23)**. Turn on water supply.
- Rotate diverter handle and flush lines until water is clear.
- Reattach **AERATOR (27)** and check for leaks.
- Drain basin and check drain seals.



## Top View of Bidet Showing Locations of:

1. Diverter Valve
2. Hot & Cold Valves
3. Pop-Up Knob/Rod
4. Pop-Up Drain
5. Douche Spray



## **Ginger® Product Care**

Simple care is all that is needed in maintaining this product. Abrasive cleansers, detergents and silver or brass polish may result in damage to the finish and therefore should not be used. To clean, simply wipe with a soft, water-dampened cloth. Ginger hand, deck and wall shower sprays feature easy-cleaning jets. The jets should be cleaned periodically by rubbing your thumb or a damp cloth across the jets to loosen mineral deposits. Run the shower spray briefly to purge the loosened deposits.

## **Limited Warranty**

Ginger warrants to the original consumer residential purchaser ("Original Purchaser") that if a Ginger product ("Product") is confirmed upon inspection to be defective in materials or workmanship during the warranty periods described below, Ginger will, at its option, either repair or replace the Product with a similar current model of the Product. If repair or replacement is not commercially practical or cannot be made in a timely manner, then Ginger will provide a refund for the Product.

## **Warranty Periods and Coverage**

### **Product Finishes**

- PVD and Polished Chrome (PC) finishes on Products other than Drains are warranted as long as the Original Purchaser owns their home.
- All other finishes are warranted for ten (10) years from date of purchase by the Original Purchaser.

### **Drain Finishes**

- Polished Chrome (PC), Satin Nickel (SN) and Polished Brass (PB) finishes on bath or lavatory drains of all types ("Drains") are warranted for one (1) year from date of purchase by the Original Purchaser.
- All other Drain finishes have no warranty.

### **Functionality**

- All Product parts except valves are warranted for ten (10) years from date of purchase by the Original Purchaser.
- Ceramic disc valves for the lavatory faucet, tub/shower and roman tub are warranted for as long as the Original Purchaser owns the home.
- All other valves (balance pressure, thermostatic, etc.) are warranted for one (1) year from date of purchase by the Original Purchaser.

## **Exclusions from Coverage**

***This Warranty does not cover labor charges or associated costs for, or damages occurring during the removal, transportation, return or installation of Products or replacement Products.***

*This Warranty does not cover damage or defects due to normal wear and tear, misuse, abuse, hard water, improper storage, improper handling, improper maintenance\*, improper installation\*\* or uses other than normal household usage\*\*\*.*

*This Warranty is not transferable.*

## **Limitations on Remedies**

***In no event will Ginger be liable for incidental or consequential damages (such as labor charges), whether based on breach of express or implied warranty, breach of contract, negligence, strict liability or any other legal theory.*** Some states do not allow the exclusion or limitation of incidental or consequential damages, so, the above limitation or exclusion may not apply to you.

*Any implied warranties, including the implied warranties of merchantability and fitness for a particular purpose, are limited to the duration of this written warranty. Some states do not allow limitations on how long an implied warranty may last, so the above limitation may not apply to you.*

## **Warranty Service**

To obtain service under this Warranty, please contact your Product dealer. If you are unable to locate your dealer, please call 800-842-4872 or access the Ginger website at [www.gingerco.com](http://www.gingerco.com). Proof of purchase, such as the original purchase order, is required to issue credit to the distributor.

## **State Remedies**

*This Warranty gives you specific legal rights, and you may have other rights which vary from state to state.*

\* **Maintenance** Proper maintenance is required to preserve all finishes. Do not use any abrasive cleaners, alcohol, ammonia, detergents, or brass or silver polish on the Products. For complete care requirements and recommendations, please visit our website at [www.gingerco.com](http://www.gingerco.com).

\*\* **Proper Installation** Products must be installed in accordance with the manufacturer's installation instructions supplied with the Products. For example, pipes must be flushed before faucet installations, because solder and other debris may damage ceramic discs. You may also call 800-842-4872 for copies of the installation instructions. Many of our installation instructions are also available on our website, [www.gingerco.com](http://www.gingerco.com).

\*\*\* **Commercial Purchasers** Ginger extends the above limited warranty to purchasers of Products for industrial, commercial and business use upon the same terms and conditions and exclusions applicable to residential purchasers, except that the finish and functionality warranty periods are reduced to a period of one (1) year from the date of purchase. **Additionally, with respect to commercial purchasers, all implied warranties, including the implied warranties of merchantability and fitness for a particular purpose are excluded and disclaimed.**