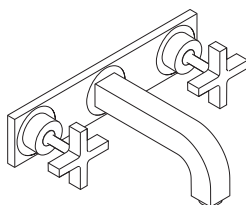
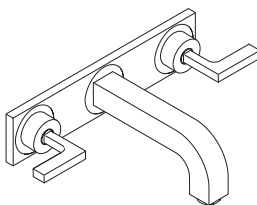


Installation / Warranty



Citerio
39144XX1

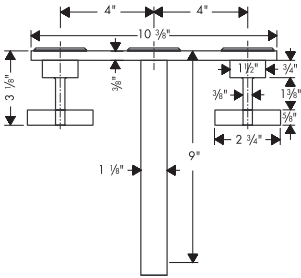


Citerio
39148XX1

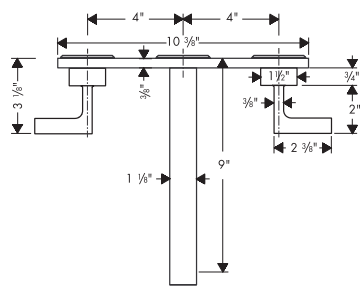
AXOR[®]
hansgrohe

Axor Citterio Wall Mount Lav Mixer with Cross Handles 39144XX1

Axor Citterio Wall Mount Lav Mixer with Lever Handles 39148XX1



39144XX1



39148XX1

Technical Data

Flow rate @ 45 psi

2.2 gpm

Maximum water pressure

145 psi

Recommended water pressure:

14.5 - 75 psi

Recommended hot water temp.:

120°F - 140°F*

*Some municipalities limit the maximum water temperature from the water heater to 120° or below. Please know and follow all applicable local codes when setting the temperature on the water heater.

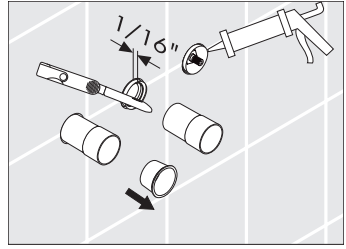
Installation Consideration

Rough-in 10303181 must be installed, and the wall finished, prior to installation of this trim kit.

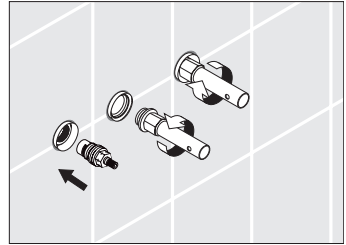
For the trim to fit properly, the outside surface of the finished wall must fall between the "minimum" and "maximum" lines on the factory installed plaster shields on the rough-in. If the rough-in is too far inside the wall, install extension kit 96259000 (purchased separately) before attempting to install the handle trim.

No drain is included with this trim kit. Please consult the sink manufacturer regarding a suitable drain for the specific sink used.

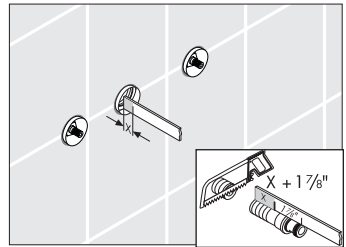
- Remove the inserts from the hot and cold plaster shields.
- Cut the plaster shields so that they extend $1/16''$ from the wall. Seal around the shields with a suitable, non-staining, waterproof bathroom sealant.



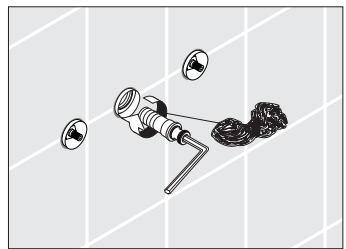
- Lever handle version only:
Remove the hot and cold cartridges using a 17 mm deep socket wrench. Replace them with the $1/4$ turn ceramic cartridges included with the trim kit. The hot cartridge is marked with notches on the wrench flats.



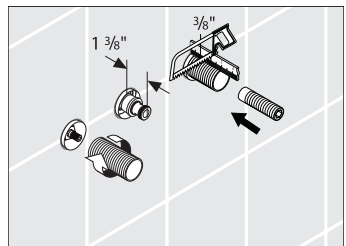
- On the spout outlet, measure the distance from the brass rough-in to the end of the plaster shield. Record this measurement ("X"). Add $1\ 7/8''$ to this measurement. Measure the spout adapter. Mark a point $X + 1\ 7/8''$ from the o-ring end of the adapter. Cut the adapter at this point.



- Wrap the threads with several layers of Teflon® thread tape. Screw it into the spout port.

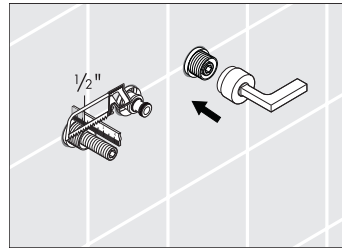


- Measure the distance from the plaster shield to the end of the spout adapter. It should measure $1\ 3/8''$.

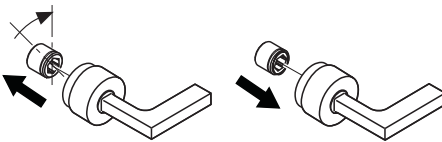
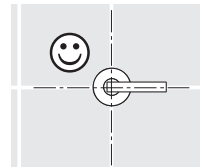
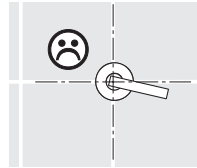


- Install the outer sleeves to the hot and cold valves. Measure each outer sleeve to a point $3/8$ " from the surface of the finished wall. Mark the sleeve at this point. Cut the sleeves. Install the inner sleeve.

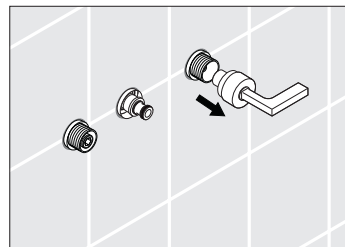
- Measure the inner sleeve to a point $1/2$ " from the surface of the finished wall. Mark and cut the inner sleeve at this point. Place the handle over the inner sleeve.



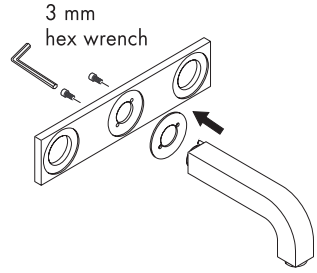
- The handle should be parallel to the floor. If it is not, remove the handle. Remove the handle insert, turn it slightly and replace. The handle should now be parallel to the floor.



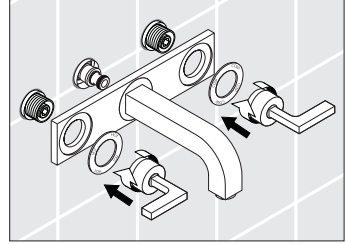
- Remove the handles.



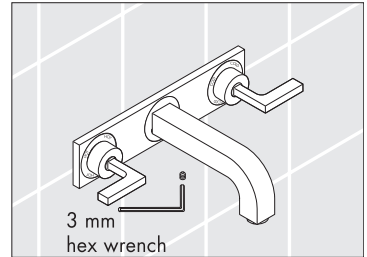
- Attach the spout and spout escutcheon to the wall plate with the screws provided.



- Place the plate and spout assembly over the valve. Install the handle escutcheons and the handles. Turn the handle bases clockwise, so that they thread onto the outer sleeves.

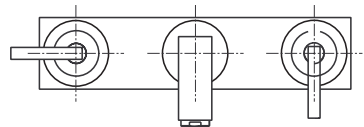


- Secure the spout to the spout adapter by tightening the set screw.



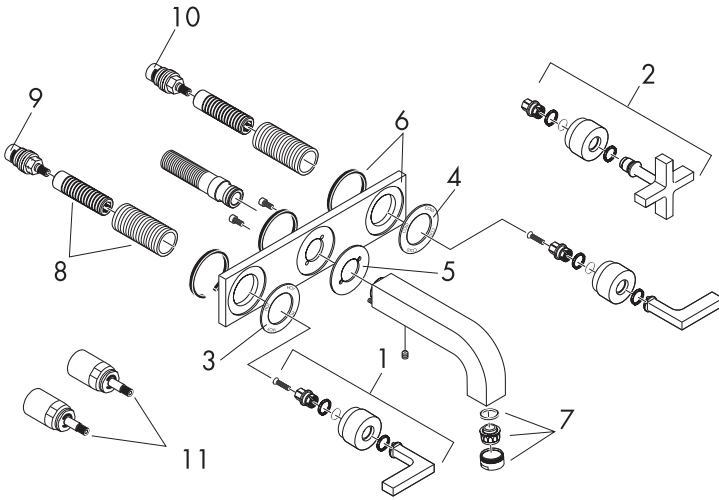
User Instructions – Lever handle version

- Turn the handle downwards (clockwise for cold, counter-clockwise for hot) to turn the water on. Turn the handle upwards to turn the water off.
- In the off position, the handles should be parallel to the floor.



Replacement parts

1	lever handle	39296XXX	
2	cross handle	39295XXX	
3	hot escutcheon	96759XXX	
4	cold escutcheon	96758XXX	
5	spout escutcheon	96760XXX	
6	escutcheon	96757XXX	
7	aerator	13085000	
8	fixing set	96393000	
9	hot cartridge	96351000	
10	cold cartridge	96350000	
11	extension kit	96259000	(optional)



Cleaning Recommendation for Hansgrohe Products

Modern faucetry and shower products utilize a combination of materials to comply with the needs of the market with regard to design and functionality.

To avoid damage, it is necessary to use some caution when cleaning. Damage caused by improper treatment is not covered under the Hansgrohe warranty.

Cleaning Materials for Faucets and Showers

- To remove lime scale, use only products made specifically for that purpose. Always follow the manufacturer's instructions when using.
- Do not use cleaners that contain hydrochloric, formic, acetic, or phosphoric acids, as these will cause considerable damage to finishes and to plastic components.
- Never mix cleaning materials.
- Never use cleaners containing abrasives. Do not use abrasive cleaning cloths, pads, or sponges.

Cleaning Procedures

- Clean your faucets and shower products as and when required. Regular cleaning will prevent scale buildup and water spotting.
- Follow the label instructions. Do not allow any cleaner to remain on the product for longer than necessary.
- When using spray cleaners, spray first onto a sponge or cloth – do not spray directly onto the product.
- After cleaning, rinse thoroughly with clear water to remove any cleaner residue.

Important

- Soap and shampoo residue can also cause damage to the product. Rinse well with clean water after use.
- If the surface is already damaged, harsh cleaning materials will cause further damage.

Limited Lifetime Consumer Warranty

This product has been manufactured and tested to the highest quality standards by Hansgrohe, Inc. („Hansgrohe“). This warranty is limited to Hansgrohe products which are purchased by a consumer in the United States after March 1, 1996, and installed in either the United States or Canada.

WHO IS COVERED BY THE WARRANTY

This warranty extends to the original consumer purchaser only.

WHAT IS COVERED BY THE WARRANTY

This warranty covers only your Hansgrohe manufactured product. Hansgrohe warrants this product against defects in material or workmanship as follows: Hansgrohe will repair at no charge for parts only or, at its option, replace any product or part of the product which proves defective because of improper workmanship and/or material, under normal installation, use, service and maintenance. If Hansgrohe is unable to provide a replacement and repair is not practical or cannot be timely made, Hansgrohe may elect to refund the purchase price in exchange for the return of the product.

LENGTH OF WARRANTY

Replacement or repaired parts of products will be covered for the term of this warranty as stated in the following two sentences. If you are a consumer who purchased the product for use primarily for personal, family, or household purposes, this warranty extends for as long as you own the product and the home in which the product is installed. If you purchased the product for use primarily for any other purpose, including, without limitation, a commercial purpose, this warranty extends only (i) for 1 year, with respect to Interaktiv and Retroaktiv products, and (ii) for 5 years, with respect to AXOR, ShowerPower and Pharo products.

THIS WARRANTY DOES NOT COVER, AND HANSGROHE WILL NOT PAY FOR:

- A. Conditions, malfunctions or damage not resulting from defects in material or workmanship.
- B. Conditions, malfunctions or damage resulting from (1) improper installation, improper maintenance, misuse, abuse, negligence, accident or alteration, or (2) the use of abrasive or caustic cleaning agents or “no rinse” cleaning products, or the use of the product in any manner contrary to the product instructions.
- C. Labor or other expenses for the disconnection or return of the product for warranty service, or for installation or reinstallation of the product.
- D. Accessories or related products not manufactured by Hansgrohe.

TO OBTAIN WARRANTY SERVICE

Contact your Hansgrohe retailer, or write to Technical Service at:

Hansgrohe Inc.
1492 Bluegrass Lakes Parkway
Alpharetta GA 30004

Or, call Hansgrohe toll-free at (800) 334-0455.

In requesting warranty service, you will need to provide

- 1. The sales receipt or other evidence of the date and place of purchase.
- 2. A description of the problem.
- 3. Delivery of the product or the defective part, postage prepaid and carefully packed and insured, to Hansgrohe Inc. 1492 Bluegrass Lakes Parkway, Alpharetta, Georgia 30004, Attention: Technical Service, if required by Hansgrohe.

When warranty service is completed, any repaired or replacement product or part will be returned to you postage prepaid.

EXCLUSIONS AND LIMITATIONS

REPAIR OR REPLACEMENT (OR, IN LIMITED CIRCUMSTANCES, REFUND OF THE PURCHASE PRICE) AS PROVIDED UNDER THIS WARRANTY IS THE EXCLUSIVE REMEDY OF THE PURCHASER. HANSGROHE NEITHER ASSUMES NOR AUTHORIZES ANY PERSON TO CREATE FOR IT ANY OBLIGATION OR LIABILITY IN CONNECTION WITH THIS PRODUCT.

HANSGROHE SHALL NOT BE LIABLE TO PURCHASER OR ANY PERSON FOR ANY INCIDENTAL, SPECIAL, OR CONSEQUENTIAL DAMAGES, ARISING OUT OF BREACH OF THIS WARRANTY OR ANY IMPLIED WARRANTY (INCLUDING MERCHANTABILITY).

Some States do not allow the exclusion or limitation of incidental or consequential damages, so the above limitation or exclusion may not apply to you.

This warranty gives you specific legal rights, and you may have other rights which vary from State to State.

You may be required by law to give us a reasonable opportunity to correct or cure any failure to comply before you can bring any action in court against us under the Magnuson-Moss Warranty Act.

PRODUCT INSTRUCTIONS AND QUESTIONS

Upon purchase or prior to installation, please carefully inspect your Hansgrohe product for any damage or visible defect. Prior to installing, always carefully study the enclosed instructions on the proper installation and the care and maintenance of the product. If you have questions at any time about the use, installation, or performance of your Hansgrohe product, or this warranty, please call or write to us at the toll-free number and address printed above.

Hansgrohe Inc.
1490 Bluegrass Lakes Parkway
Alpharetta GA 30004
770 360 9880
website: www.hansgrohe-USA.com