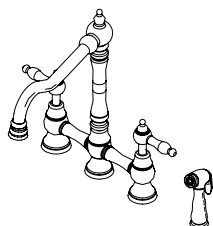


*Belle Forêt*  
collection



**N110 01**

# **N110**

## **TWO HANDLE KITCHEN FAUCET**

---

### **Product Features**

- 4-Hole Installation
- 2.2 GPM @ 60PSI water saving aerator
- Brass body
- ½" 14 NPS Inlet
- Ceramic cartridge
- Metal spray with finish matched metal lever handle

### **Standards/Approvals**

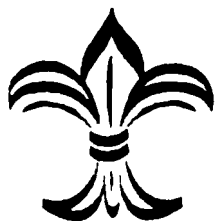
- N110 meets or exceeds:
- ANSI/ASME A112.18.1
- ANSI/NSF 61 – Sec 9
- IAPMO/UPC
- California Proposition 65
- Massachusetts

**UPC®**



### **PRODUCT SPECIFICATION:**

Two-handle kitchen faucet shall have a brass body, ceramic cartridge, 9-1/2" spout, metal spray with finish matched metal lever handle. Product shall be able to be installed in 4-hole installation. Product shall be Belle Forêt model N110 \_\_\_\_\_.

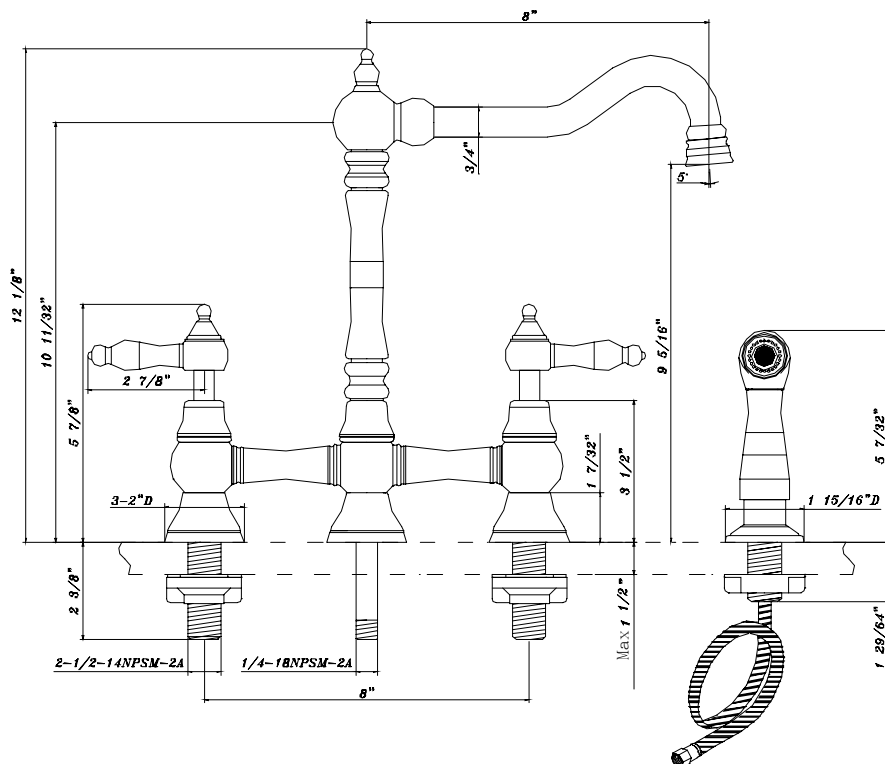


*Belle Forêt*  
collection

# N110

## TWO HANDLE KITCHEN FAUCET

### 4-Hole Installation Shown

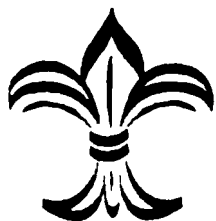


### Other Specifications

Faucet Hole diameter	1-1/2"
Max Deck Thickness	1-1/2"

### Available Finishes

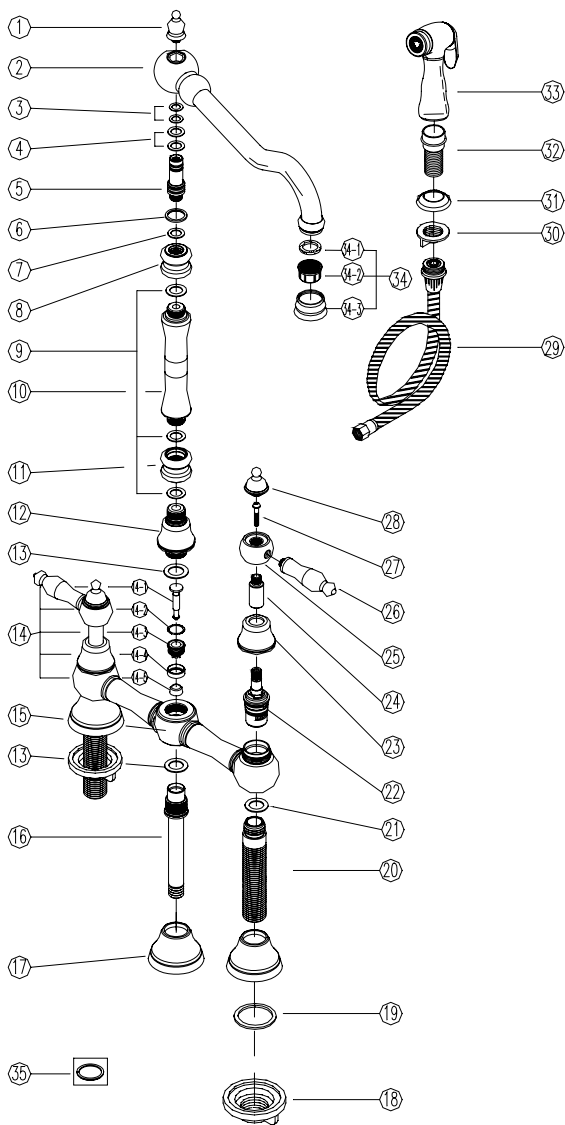
- Chrome
- Polished Brass
- Stainless Steel
- Oil Rubbed Bronze
- Matte Nickel
- Weathered Copper
- Polished Nickel

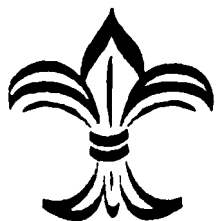


Belle Forêt  
collection

# N110 TWO HANDLE KITCHEN FAUCET

## PARTS BREAKDOWN





*Belle Forêt*  
collection

# N110

## TWO HANDLE KITCHEN FAUCET

### PARTS LISTING

No	Name	Kit# / Part#	Qty	No	Name	Kit# / Part#	Qty
1	ball joint	N/A	1	18	lock nut	N/A	2
2	spout assembly		1	19	O-RING		3
3	O-RING		2	20	shank		2
4	O-RING		2	21	O-RING		2
5	swivel valve		1	22	cartridge-hot	507071N	1
6	washer		1		cartridge-cold	507072N	1
7	O-RING		1	23	canopy	N/A	2
8	swivel joint		1	24	connector		2
9	O-RING		3	25	ball joint		2
10	sleeve		1	26	end of handle		2
11	joint		1	27	screw	663413XX	2
12	connector		1	28	cap	2	
13	O-RING		2	29	spray hose	511006Nxx	1
14	diverter assembly		1	30	nut	604637xx	1
14-1	diverter		1	31	escutcheon		1
14-2	O-RING		1	32	bolt		1
14-3	diverter base		1	33	spray head	503105Nxx	1
14-4	seat	1	34	aerator set	500141Nxx	1	
14-5	seat	1	34-1	seal		1	
15	body	1	34-2	insert		1	
16	shank	1	34-3	housing		1	
17	base	3	35	red ring -hot	N/A	1	
				blue ring-cold		1	

xx designates finish matched parts.