



7225.723 Shown

**MODEL NUMBER:**

- ☐ **7225.713 Bath/Shower Fitting**  
I.P.S. Tub Spout. Porcelain Lever handles.
- ☐ **7225.723 Bath/Shower Fitting**  
I.P.S. Tub Spout. Metal Cross handles.
- ☐ **7225.733 Bath/Shower Fitting**  
I.P.S. Tub Spout. Metal Lever handles.



**GENERAL DESCRIPTION:**

Cast brass valve body on 8 inch centers. 1/4 turn washerless ceramic disc valve cartridges - reversible for use with either lever or cross handles. 1/2" NPT female threaded inlets and outlets. Showerhead with 2.5gpm/9.5L/min. flow restrictor. Third handle provides positive diverting action between showerhead and tub spout.

**PRODUCT FEATURES:**

**Brass Construction:** Durable - Ideal for prolonged contact with water. Provides the finest surface for application of all finishes.

**Ceramic Disc Valve Cartridges:** Assures a lifetime of drip-free performance.

**Increased Rough-in:** 42mm to 86mm (1-5/8 to 3-3/8).

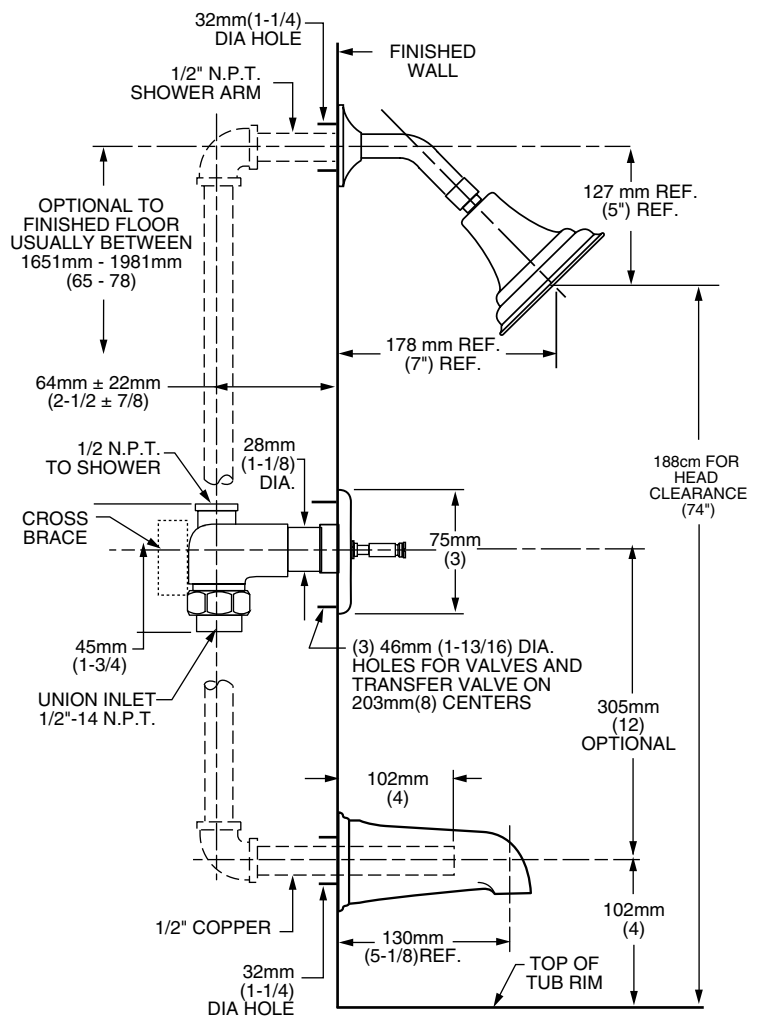
**Exclusive Valve Escutcheon Design:** 3 piece escutcheon design accomodates deep and shallow rough-ins. Provides water tight seal around valves.

**Integral Unions:** No soldering required.

**Exclusive Handle Alignment System:** Allows fine tuning of handle position.

**Choice of Finishes:** Wide range of durable finishes.

**Exclusive Plaster Guard:** Plaster guard can be used to test for leaks prior to handle installation.



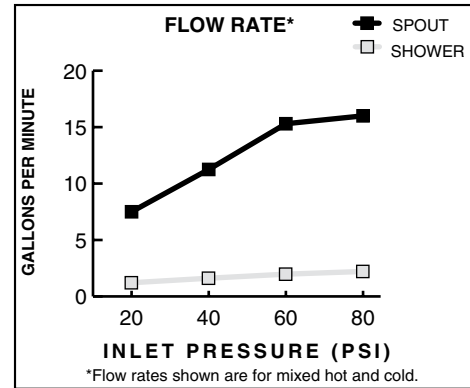
**SUGGESTED SPECIFICATION:**

Three handle bath/shower fitting shall feature cast brass construction. Shall also feature 1/4 turn washerless ceramic disc valve cartridges that are reversible for use with cross or lever handles. Fitting shall be American Standard Model # 7225.\_\_\_\_.\_\_\_\_.

**CODES AND STANDARDS**

These products meet or exceed the following codes and standards:

**ASME A112.18.1**  
**CSA B 125**



	Product Number	Description	Finish Options						
			Polished Chrome	PVD Blackened Bronze	PVD Polished Brass	PVD Satin/Chrome Mix	PVD Satin Nickel	PVD Satin/Brass Mix	P.Chrome /PVD Brass Mix
			002	068	099	221	295	297	299
	7225.713	Three handle Bath/Shower. Porcelain Lever handles.		<b>N/A</b>		<b>N/A</b>		<b>N/A</b>	<b>N/A</b>
	7225.723	Three handle Bath/Shower. Metal Cross handles.		<b>N/A</b>		<b>N/A</b>		<b>N/A</b>	<b>N/A</b>
	7225.733	Three handle Bath/Shower. Metal Lever handles.							

**N/A = NOT AVAILABLE**

Meets the American Disabilities Act Guidelines and **ANSI A117.1** Requirements for the physically challenged.