

# EXTRA-LARGE CAPACITY COMMERCIAL DRYER



## Featuring Microprocessor Controls



### **CED9060AW—27" Non-Metered Electric Dryer** **CGD9060AW—27" Non-Metered Gas Dryer**

- Four Roller Suspension with Permanently Lubricated Bearings
- Push-Button Controls
- Large Lint Screen (84 Sq. In.)
- Blower Guard Reduces Service Calls
- Front Control Panel 22° Angle
- Reversible Door with Heavy-Duty Die-Cast Hinges
- Front Service Accessibility
- Electric Heating Element at 5600 Watts 240-Volt
- Gas Model Features a 24K BTU Burner
- Motor: 1/3-HP with Built-In Overload Protector; Centrifugal Switch Turns Off Heating Element in the Event of a Broken Belt
- 4-Way Venting from Left or Right Side, Back or Bottom
- 2-Year Limited Parts Only Warranty/90-Day Labor\*

\*Call 1-800-NO-BELTS (800-662-3587) for warranty details.

#### **LARGE 6.7-CU.-FT. DRUM CAPACITY**

- Ideal for Handling Large-Size Loads
- Allows large loads to tumble and spread, helping to reduce dry time.

#### **INDUSTRIAL GRADE CABINET**

- Top with Integrated Backsplash
- Resists Chipping and Scratching

#### **MICROPROCESSOR CONTROLS**

- Time Remaining Display
- Front Controls for Ease-of-Use

#### **HIGH VELOCITY AIRFLOW SYSTEM**

- Whirlpool® Commercial dryer's blower system provides optimal air velocity for efficient and versatile installation. You can now vent up to 100 ft. with three elbows, and one angled hood for versatility.

# EXTRA-LARGE CAPACITY COMMERCIAL DRYER

Featuring Microprocessor Controls



## Whirlpool® Extra-Large Capacity Commercial Dryer

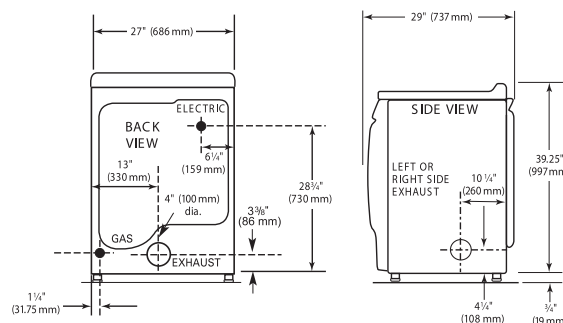
DRYER SPECIFICATIONS	
<b>MODELS</b>	CED9060AW/CGD9060AW
<b>MOTOR</b>	
Single-phase, thermoprotected against overload, auto-reset	
HP (kw)	1/3 (.25)
<b>CAPACITY</b>	
Cu. ft. (liters)	6.7 (190)
<b>DOOR OPENING DIAMETER</b>	
In. (mm)	18.25 (464)
<b>AIRFLOW</b>	
Gas models — cfm (cmm)	230 (6.5)
Electric models — cfm (cmm)	215 (6.1)
Tumble speed — RPM	50±1
<b>ELECTRICAL REQUIREMENTS</b>	
CED model — Voltage	240V/60Hz
CGD model — Voltage	120V/60Hz
<b>BREAKER/FUSE REQUIREMENTS</b>	
CED model — Amps	30
CGD model — Amps	15
<b>EXHAUST DUCT DIAMETER</b>	
In. (mm)	4 (100)*
<b>ELECTRONIC BURNER IGNITION</b>	
CGD model	Yes
<b>HEATING ELEMENT RATING</b>	
CGD model — BTU/hr. (kcal/hr.)	24,000 (6,048)
CED model — Electric heating element — watts	5,600
<b>GAS INLET</b>	
CGD model — in.	3/8 N.P.T.
<b>ADJUSTABLE LEVELING LEGS</b>	Yes
<b>APPROXIMATE WEIGHT</b>	
Crated — lbs. (kg)	144 (65)
Uncrated — lbs. (kg)	133 (60)
<b>DIMENSIONS</b>	
Width — in. (mm)	27 (686)
Depth — in. (mm)	29 (737)
Height — in. (mm)	39.25 (997)

\*Use a 4" (100mm) diameter rigid aluminum or galvanized steel duct. Never use plastic, nonmetal or combustible duct.

See specific instructions for proper installation. Because of continuous product improvement, Whirlpool reserves the right to change specifications without notice.

Power cords on electric models sold separately.

LP Conversion Kit #W10402145 Pedestal Single Box Kit #WHP0400VW Pedestal Pack of 10 Kit #WHP0401VW



Dimensions are for planning purposes only.  
See Whirlpool® Installation Instructions for full details.

### MAXIMUM EXHAUST DUCT LENGTH PER NUMBER OF TURNS

Number Of 90° Turns	Rigid Metal Vent	
	Box Hood and Louvered Style	Angled Hood Style
0	135 ft. (41.2 m)	129 ft. (39.3 m)
1	125 ft. (38.1 m)	119 ft. (36.3 m)
2	115 ft. (35.1 m)	109 ft. (33.2 m)
3	106 ft. (32.3 m)	100 ft. (30.5 m)
4	98 ft. (29.9 m)	92 ft. (28.0 m)

Number Of 90° Turns	Flexible Metal Vent	
	Box Hood and Louvered Style	Angled Hood Style
0	76 ft. (23.2 m)	62 ft. (18.9 m)
1	71 ft. (21.6 m)	57 ft. (17.4 m)
2	67 ft. (20.4 m)	53 ft. (16.2 m)
3	65 ft. (19.8 m)	51 ft. (15.6 m)
4	63 ft. (19.2 m)	49 ft. (14.9 m)



## 2-YEAR LIMITED PARTS ONLY WARRANTY

For the first two years from the date of purchase, when this major appliance is installed, maintained and operated according to the instructions attached to or furnished with the product, Whirlpool will pay for factory-specified replacement parts to correct defects in materials or workmanship that existed when this commercial appliance was purchased. See warranty for complete details.

**American Pride**  
Designed, Engineered &  
Assembled in the U.S.A.

To Locate a Distributor Near You, Please Visit [www.whirlpoolcommerciallaundry.com/distributor](http://www.whirlpoolcommerciallaundry.com/distributor), or Call 1-800-N0-BELTS.