



KMS-2000MLH

SERENITY SERIES CUBER ICE MACHINE



KMS-2000MLH
03/31/17
Item # 13283

W x D x H
30" x 24" x 32^{7/8}"

Installation Dimension*
SRK-20H / SRK-20H3
62" x 21" x 45"

*Dimensions include legs


Actual Dimension
SRK-20H / SRK-20H3
59^{11/16}" x 17" x 30"



KMS-2000MLH
Remote Air-Cooled
Shown on optional
Lancer 30" Dispenser



Item #: _____
Project: _____
Qty: _____
AIA#: _____

Features

- ▶ Individual crescent cube
- ▶ Stainless steel evaporator
- ▶ CycleSaver™ design 

- Up to 1910 lbs. of ice production per 24 hours
- Ice on beverage design
- Durable stainless steel exterior 
- Protected by H-Guard Plus Antimicrobial Agent 
- EverCheck™ alert system
- Less heat in the kitchen
- Minimized noise
- CFC / HFC Free Foam
- R-404A Refrigerant

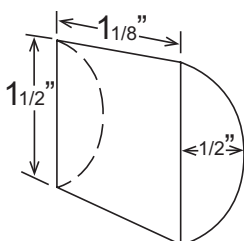
Warranty:

3 Year Parts & Labor on entire machine. 5 Year Parts & Labor on Evaporator. 5 Year Parts on Compressor; air-cooled condenser coil. Valid in United States, Canada, Puerto Rico and U.S. Territories. Contact factory for warranty in other countries.

		ICE PRODUCTION				WATER USAGE		ELECTRICAL						
Condenser	Model	Air / Water Temp Lbs. per 24 hours		Per Cycle		Potable	Condenser	kWh Used	Max. Fuse Size	Amperage	Voltage	Heat Rejection BTU/hr.	Shipping Weight	ENERGY STAR®
		70°/ 50°F	90°/ 70°F	Lbs.	Cubes	Gal. per 100 lbs. 90°/ 70°F	Gal. per 100 lbs. 90°/ 70°F	per 100 lbs. 90°/ 70°F	or HACR Circuit Breaker					
Remote Air-Cooled	KMS-2000MLH with SRK-20H	1861	1786	27.9	1560	22.0	N/A	4.70	30A	21.3A	115V/60/1 *	37,300	206 lbs.	
Remote Air-Cooled	KMS-2000MLH with SRK-20H3	1910	1706	27.4	1560	23.3	N/A	4.65	20A	11.0A	115V/60/1 *	36,000	206 lbs.	
		LINE SETS - Pre-Charged				TEMP RANGE		ELECTRICAL				* Voltage supply for KMS Ice Maker is supplied from the SRK Remote Condenser		
Condenser	Model	25' Length	35' Length	55' Length	Ambient (Outdoor Use)	Voltage Range	Max. Fuse Size or HACR Circuit Breaker	Amperage	Voltage	Heat Rejection BTU/hr.	Shipping Weight	ENERGY STAR®		
Remote	SRK-20H	HS-0243**	HS-0244**	HS-0245**	-20 - 122°	187-253VAC	30A	21.3A	208-230V/60/1	37,300	325 lbs.			
Remote	SRK-20H3	HS-0243**	HS-0244**	HS-0245**	-20 - 122°	187-253VAC	20A	11.0A	208-230V/60/3	36,000	325 lbs.			

** line sets require refrigerant

KM Cube Dimensions*



* approximate size in inches, image not to scale

Operating Limits- KMS-2000MLH

- Ambient Temp Range 45 - 100°F
- Water Temp Range 45 - 90°F
- Water Pressure 10 - 113 PSIG
- Voltage Range 187-253V*

* Voltage supply for KMS Ice Maker is supplied from the SRK Remote Condenser

Service- KMS-2000MLH

- Allow 6" (15 cm) clearance at rear and sides for proper air circulation for ease of maintenance and/or service should they be required.
- Panels easily removed and all components accessible for service.

Plumbing- KMS-2000MLH

- Ice maker Water Supply Line: Minimum 3/8" Nominal ID Copper Water Tubing or Equivalent
- Ice maker Drain Line: Minimum 3/4" Nominal ID Hard Pipe or Equivalent

Service- SRK-20H(3)

- Allow 24" (61 cm) clearance in both front and rear for proper air circulation and ease of maintenance/service.
- For best performance the Remote Condenser should not be more than 33 feet above the icemaker or no more than 10 feet below it. These distances are measure from fitting to fitting.

Hoshizaki reserves the right to change specifications without notice.



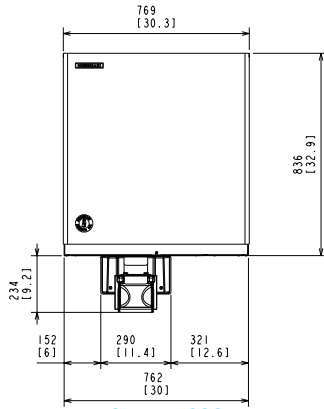
KMS-2000MLH

SERENITY SERIES CUBER ICE MACHINE

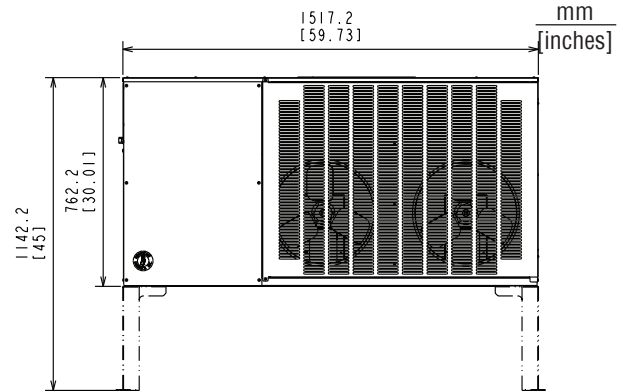


KMS-2000MLH
03/31/17
Item # 13283

FRONT VIEW

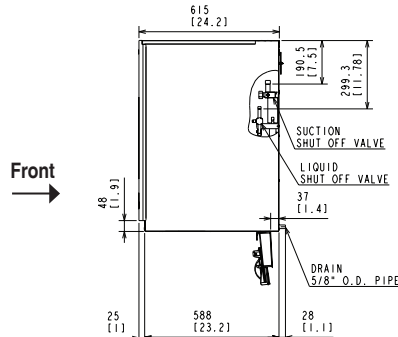


REMOTE AIR-COOLED

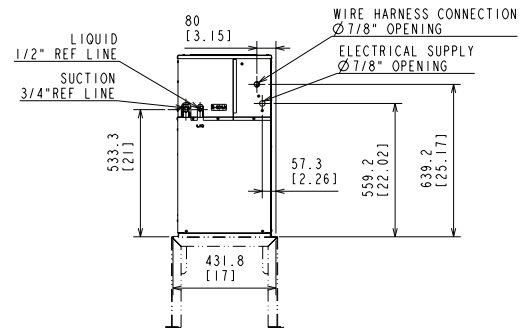


SRK-20H(3) REMOTE CONDENSER

SIDE VIEW

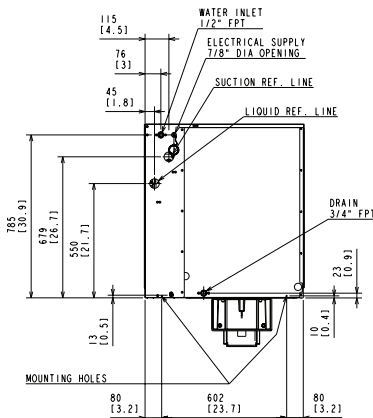


REMOTE AIR-COOLED



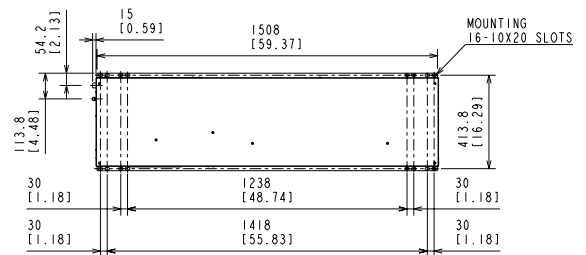
SRK-20H(3) REMOTE CONDENSER

REAR VIEW



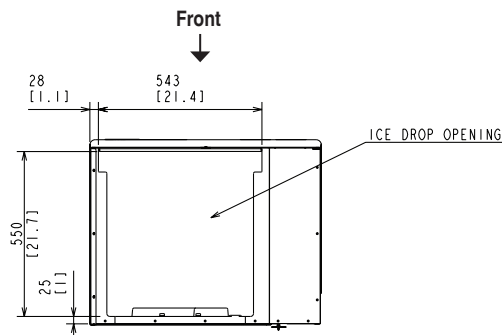
REMOTE AIR-COOLED

TOP VIEW



SRK-20H(3) REMOTE CONDENSER

BOTTOM VIEW



REMOTE AIR-COOLED



Tubing Kits - Requires Field Brazing

(Sold Separately)

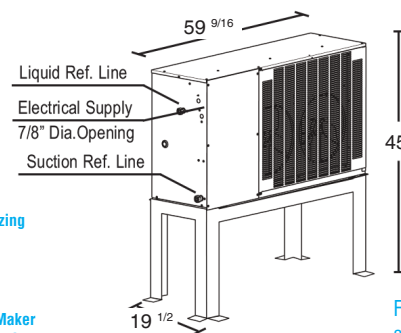
25' HS-0243

35' HS-0244

55' HS-0245

Voltage supply for the KMS Ice Maker is supplied from the SRK Remote Condenser.

SRK-20H(3) Remote Condenser (Sold Separately)
(W x D x H) 59^{9/16} x 19^{1/2} x 45
For Use with KMS-2000MLH(3)



For best performance allow 24 inch clearance for air circulation.