

Bissell®
BigGreen Commercial®



**POWERSTEAMER™
USER GUIDE**

BGST1566 SERIES

IMPORTANT SAFETY INSTRUCTIONS

READ ALL INSTRUCTIONS BEFORE USING YOUR STEAM MOP.

When using an electrical appliance, basic precautions should be observed, including the following:
Unplug from outlet when not in use and before conducting maintenance.

WARNING

TO REDUCE THE RISK OF FIRE, ELECTRIC SHOCK, OR INJURY:

- » Connect to a properly grounded outlet only. See grounding instructions. Do not modify the 3-pronged grounded plug.
- » Do not direct steam at people, animals, or at electrical outlets.
- » Do not expose to rain.
- » Store indoors.
- » Unplug from outlet when not in use and before conducting maintenance or troubleshooting.
- » Do not leave steam cleaner unattended.
- » Do not expose hair, loose clothing, fingers or body parts to openings or moving parts.
- » Do not service steam cleaner when it is plugged in.
- » Do not handle steam cleaner with wet hands.
- » Do not use steam cleaner if it has been dropped, damaged, left outdoors or dropped into water, return it to a service center.
- » Do not pull or carry by cord, use cord as a handle, close door on cord, pull cord around sharp corners or edges, or expose cord to heated surfaces.
- » Do not unplug by pulling on cord.
- » Do not use appliance in an enclosed space filled with vapor given off by oil-base paint, paint thinner, some moth proofing substances, flammable dust, or other explosive or toxic vapors.
- » Do not allow to be used as a toy.
- » Do not use on leather, wax polished furniture or floors, synthetic fabrics, velvet or other delicate, steam-sensitive materials.
- » Do not immerse.
- » Not for space heating purposes
- » Do not use for any purpose other than described in this User's Guide.
- » Use only manufacturer's recommended attachments – use of attachments not provided or sold by BISSELL may cause fire, electric shock or injury.
- » Never put descaling, aromatic, alcoholic or detergent products into the steam cleaner, as this may damage it or make it unsafe for use.
- » Unplug by grasping the plug, not the cord.
- » Close attention is necessary when used by or near children.

SAVE THESE INSTRUCTIONS FOR FUTURE USE

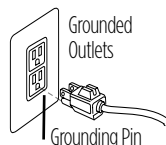
This model is for commercial use only.

WARNING

Improper connection of the equipment-grounding conductor can result in a risk of electrical shock. Check with a qualified electrician or service person if you aren't sure if the outlet is properly grounded. **DO NOT MODIFY THE PLUG.** If it will not fit the outlet, have a proper outlet installed by a qualified electrician. This appliance is designed for use on a nominal 120-volt circuit, and has a grounding attachment plug that looks like the plug in the illustration. Make certain that the appliance is connected to an outlet having the same configuration as the plug. No plug adapter should be used with this appliance.

GROUNDING INSTRUCTIONS

This appliance must be connected to a grounded wiring system. If it should malfunction or break down, grounding provides a safe path of least resistance for electrical current, reducing the risk of electrical shock. The cord for this appliance has an equipment-grounding conductor and a grounding plug. It must only be plugged into an outlet that is properly installed and grounded in accordance with all local codes and ordinances.



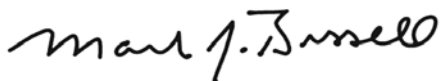
Thanks for buying a BISSELL BigGreen Commercial Steam Mop

We're glad you purchased a BISSELL hard floor cleaner. Everything we know about floor care went into the design and construction of this complete, high-tech home cleaning system.

Your BISSELL hard floor cleaner is well made, and we back it with a limited one-year warranty. We also stand behind it with a knowledgeable, dedicated Consumer Care department, so, should you ever have a problem, you'll receive fast, considerate assistance.

My great-grandfather invented the floor sweeper in 1876. Today, BISSELL is a global leader in the design, manufacture, and service of high quality homecare products like your BISSELL hard floor cleaner.

Thanks again, from all of us
at BISSELL.



Mark J. Bissell
Chairman & CEO

Safety Instructions.....	2
Product View.....	4
Assembly	5
Operations	6-8
Maintenance & Care	9
Troubleshooting	10
Accessories	10
Warranty.....	11
Service.....	11
Consumer Care.....	12

Product View

- 1 Strain Reliever Handle™
- 2 Quick Release™ Cord Wrap
- 3 Removable Water Tank
- 4 Lower Cord Wrap
- 5 Smart Set™ Steam Control
- 6 Low Profile, Edge-Cleaning Mop Head
- 7 Maneuverable Swivel
- 8 Removable Easy Scrubber
- 9 Washable Microfiber Mop Pads (quantity may vary)



WARNING

Plastic film can be dangerous. To avoid danger of suffocation, keep away from babies and children.



WARNING

Do not plug in your hard floor cleaner until you are familiar with all instructions and operating procedures.



WARNING

To reduce the risk of electric shock, turn power switch off and disconnect plug from electrical outlet before performing maintenance or troubleshooting checks.

Assembly

Your steam mop assembles quickly and easily. It is packaged with the following items:

Handle Assembly with one screw

Lower Body

Maneuverable Mop Head

Removable Water Tank

Removable Easy Scrubber
(attached to mop head)

Mop Pads (quantity may vary)

1. Attach lower body to mop head by snapping it into place.
2. Slide handle assembly down and screw until tightened.

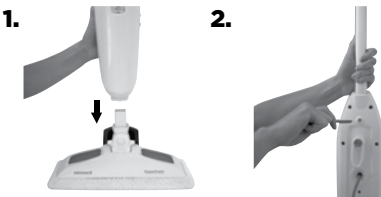
Steam mop assembly is now complete.

WARNING

Do not plug in your hard floor cleaner until you are familiar with all instructions and operating procedures.



Removable
Water Tank



WARNING

Exercise extreme care when using your steam mop on hardwood floors. Prolonged application of steam in one area increases the risk of damage to the surface treatment on timber floors. Test steam mop in an inconspicuous area before mopping a large area. The steam mop generates hot steam, so move the unit continuously when depressing the trigger. The trigger does not need to be depressed at all times. Regular foot traffic and direct sunlight will wear down timber floor surface treatment, making it more susceptible to steam damage. Check with your timber floor treatment and application specialist prior to steam mop operation.

Operations

Special Features

Removable water tank

The water tank is located on the top of the steam mop. It can be refilled with water any time during use. Distilled or demineralized water is recommended in place of tap water. **Do not use chemicals in the water tank of your steam mop.**

SmartSet™ Steam Control

(Low, Medium, High) SmartSet™ Steam Control indicator light will stop blinking when steam mop is ready to use. Then press the Steam Level button to choose the level of steam you desire.

Microfiber Mop Pads

Reusable microfiber mop pads are machine washable and safe for virtually all hard floor surfaces. Your steam mop may have come with two different pads. The white microfiber pad is best for everyday use on delicate flooring like sealed hardwoods and laminate. The gray and white striped pad can be used for scrubbing heavily soiled floors and cleaning tougher messes.

Removable Easy Scrubber

Quickly clean sticky messes by pressing the Easy Scrubber with your foot and locking it into position. Clean grout and crevices easily with this effective tool.



WARNING

Do not attempt to use your steam mop without water in the tank. You may hear a knocking sound indicating there is no water.

Operations

Getting ready

The mop pad may have already come attached to the mop head, if not follow step 1a below.

1. Set mop head in mop pad, making sure quick-grip release tab is located on the back.
2. Fill the water tank
 - a. Remove tank by lifting straight up and away from unit.
 - b. Unscrew cap at bottom of water tank.
 - c. Fill water tank with water. For best results, water should be at room temperature.
 - d. Replace the cap, tighten until snug.
 - e. Replace water tank by gently sliding tank into place and press down firmly.
3. Twist the Quick Release™ cord wrap clockwise to unwrap the power cord completely and plug into a 120-Volt outlet as described on the Important Safety Instructions, page 3.
4. SmartSet™ Steam Select Indicator light will glow when steam mop is ready to use. Press the Steam Level button to choose the level of steam you desire.

NOTE: Upon first use of the steam mop or first use after refilling the water tank, the pump may make a “knocking” sound. This is normal and should only last a few seconds.



WARNING

Never put descaling, alcoholic, or detergent products into the steam cleaner, as this may damage it or make it unsafe for use.

1.



2a.



2b.



Operations

Before you clean

Thoroughly sweep or vacuum floor prior to cleaning with the steam mop.

Cleaning hard floors

Your steam mop is designed to clean hard flooring such as ceramic tile, vinyl, laminate, marble, stone and sealed hard wood floors. Use of your steam mop on waxed or some unwaxed floors may result in a diminished glossiness. The steam mop is not for use on unsealed wood floors. For best results test in an inconspicuous area and check the care instructions from your flooring manufacturer.

1. Plug the unit in and wait 30 seconds for it to heat up. Choose the level of steam to clean your floor: Low (delicate floors), Medium (regular cleaning), High (durable floors or sticky messes). Begin cleaning by slowly passing the unit over the floor surface.

2. To sanitize an area of your floor, (attack invisible germs and bacteria) place the steam mop over the spot for a minimum 15 seconds using continuous steam, but no longer than 20 seconds using continuous steam. For larger areas, overlap swivel head placement.

3. To thoroughly clean dried-on sticky spots place the scrubby pad on the steam mop. Then press and lock the Easy Scrubber brush into place and slowly move the brush over the sticky spot to remove.

4. To turn off the steam mop, continue to press the Steam Level button until the blue light is illuminated above the Steam Level button.

5. When the steam mop stops emitting steam, unplug the unit. Simply remove the water tank, refill, and continue steaming.



WARNING

Never put descaling, alcoholic, or detergent products into the steam cleaner, as this may damage it or make it unsafe for use.



WARNING

Tinted plates on foot may get hot while steam mop is in use. Do not touch while hot.

Maintenance & Care

When you're done

1. Unplug power cord from outlet.
2. Carefully remove the mop pad using the Quick Release™ tab from the mop head. The mop pad and lower assembly may be hot.
3. Any water remaining in the water tank should be emptied prior to machine storage.
4. Mop pad can be machine washed in warm water. Use only liquid detergents. Do not use fabric softeners or bleach. For best results, air dry.
5. Wrap power cord around quick release cord wrap on back of steam mop.
6. Wipe all surfaces of steam mop with a soft cloth. Store upright in a protected, dry area.



WARNING

To reduce the risk of electric shock, turn power switch off and disconnect plug from electrical outlet before performing maintenance or troubleshooting checks.

CAUTION

Upright storage of the cleaner with a wet mop pad may result in the formation of white marks on your floor. To remove the white marks, clean area with vinegar.

Troubleshooting

**WARNING**

To reduce the risk of electric shock, turn power switch off and disconnect plug from electrical outlet before performing maintenance or troubleshooting checks.



Problem	Possible causes	Remedies
Reduced steam or no steam	Water tank empty	Fill tank
	Steam level not selected	Select steam level by pushing steam level button

Please do not return this product to the store.

Other maintenance or service not included in the manual should be performed by an authorized service representative.
Thank you for selecting a BISSELL BigGreen Commercial product.
For any questions or concerns, BISSELL BigGreen Commercial is happy to be of service. Contact us directly at 1-800-242-1378.

Accessories

These items are available for your BISSELL steam mop.
Call 1-800-242-1378 or visit www.bissellcommercial.com

PART #	PART NAME		PART #	PART NAME	
2032633-PK3	Steam Mop Pads - 3 pack		2032634-PK3	Steam Mop Scrubby Pads - 3 pack	

Warranty

This warranty gives you specific legal rights, and you may also have other rights which may vary from state to state. If you need additional instructions regarding this warranty or have questions regarding what it may cover, please contact BISSELL BigGreen Commercial Consumer Care by E-mail, telephone, or regular mail as described below.

Limited 1-Year Warranty

Subject to the *EXCEPTIONS AND EXCLUSIONS identified below, upon receipt of the product BISSELL will repair or replace (with new or remanufactured components or products), at BISSELL's option, free of charge from the date of purchase by the original purchaser, for one year any defective or malfunctioning part.

See information below on "If your BISSELL product should require service".

This warranty does not apply to fans or routine maintenance components such as filters, belts, or brushes. Damage or malfunction caused by negligence, abuse, neglect, unauthorized repair, or any other use not in accordance with the user's guide is not covered.

BISSELL IS NOT LIABLE FOR INCIDENTAL OR CONSEQUENTIAL DAMAGES OF ANY NATURE ASSOCIATED WITH THE USE OF THIS PRODUCT. BISSELL'S LIABILITY WILL NOT EXCEED THE PURCHASE PRICE OF THE PRODUCT.

Some states do not allow the exclusion or limitation of incidental or consequential damages, so the above limitation or exclusion may not apply to you.

*EXCEPTIONS AND EXCLUSIONS FROM THE TERMS OF THE LIMITED WARRANTY

THIS WARRANTY IS EXCLUSIVE AND IN LIEU OF ANY OTHER WARRANTIES EITHER ORAL OR WRITTEN. ANY IMPLIED WARRANTIES WHICH MAY ARISE BY OPERATION OF LAW, INCLUDING THE IMPLIED WARRANTIES OF MERCHANTABILITY AND FITNESS FOR A PARTICULAR PURPOSE, ARE LIMITED TO THE TWO YEAR DURATION FROM THE DATE OF PURCHASE AS DESCRIBED ABOVE.

Some states do not allow limitations on how long an implied warranty last so the above limitation may not apply to you.

NOTE: Please keep your original sales receipt. It provides proof of date of purchase in the event of a warranty claim.

Service

If your BISSELL product should require service:

Visit BISSELL.com or contact BISSELL BigGreen Commercial Consumer Care to locate a BISSELL Authorized Service Center in your area.

If you need information about repairs or replacement parts, or if you have questions about your warranty, contact BISSELL BigGreen Commercial Consumer Care.

Website or E-mail:

www.bissellcommercial.com

Or Call:

BISSELL Big Green Commercial
Consumer Care
1-800-242-1378

Monday - Friday 8am - 6pm ET
Saturday 8am - 4pm ET

BISSELL BigGreen Commercial Consumer Care

For information about repairs or replacement parts,
or questions about your warranty:

Call:

BISSELL BigGreen Commercial Consumer Care
1-800-242-1378

Monday - Friday 8 am - 4 pm ET
Saturday 9 am - 8 pm ET

Email:

www.bissellcommercial.com/contact.html

Visit the BISSELL BigGreen Commercial Consumer Care website: www.BISSELLcommercial.com

When contacting BISSELL BigGreen Commercial Consumer Care,
have model number of cleaner available.

Please record your Model Number: _____

Please record your Purchase Date: _____

NOTE: Please keep your original sales receipt. It provides proof of purchase date in the event of a warranty claim. See Warranty on page 11 for details.



©2015 BISSELL Big Green Commercial
Grand Rapids, Michigan
All rights reserved. Printed in China
Part Number 160-5535 Rev 03/15 RevB
Visit our website at: www.bissellcommercial.com