

# AQUASPEC FAUCETS

MODEL - Z87300-CWO AQUA-SPEC SERIES

MODEL - Z7130 TEMP-GARD SERIES

METERING SHOWER VALVE



## TECHNICAL INFORMATION

---

**MAXIMUM PRESSURE:** 80 PSI

**MAXIMUM TEMPERATURE:** 140° F

OPERATION - 5 LB FORCE MAXIMUM UP TO 80 LBS PSI

---

**⚠ WARNING:** Cancer and Reproductive Harm - [www.P65Warnings.ca.gov](http://www.P65Warnings.ca.gov)

**⚠ ADVERTENCIA:** Cáncer y daño reproductivo - [www.P65Warnings.ca.gov](http://www.P65Warnings.ca.gov)

**⚠ AVERTISSEMENT:** Cancer et effets néfastes sur la reproduction - [www.P65Warnings.ca.gov](http://www.P65Warnings.ca.gov)

---

**IMPORTANT THE WATER SUPPLY LINES MUST BE THOROUGHLY FLUSHED BEFORE INSTALLATION TO PREVENT FOREIGN MATTER AND DEBRIS FROM CLOGGING AND/OR DAMAGING INTERNAL COMPONENTS**

---

**IMPORTANT THE SHOWER VALVE HAS AN INTEGRAL SHANK FILTER ASSEMBLY INSTALLED IN THE BODY UNDER THE METERING CARTRIDGE TO PREVENT FOREIGN MATTER AND DEBRIS FROM DAMAGING THE SHOWER VALVE. THE INTEGRAL FILTER MAY BE REMOVED TO BE BACK-FLUSHED AND CLEANED IF INSUFFICIENT FLOW IS DETECTED. THE INTEGRAL SHANK FILTER ASSEMBLY MUST BE RE-INSTALLED AFTER SERVICING TO ENSURE PROPER FUNCTIONING OF THE METERING CARTRIDGE.**

---

## INSTALLATION INSTRUCTIONS

1. FLUSH SUPPLY LINES PRIOR TO INSTALLING VALVE TO REMOVE DEBRIS.
2. REMOVE HANDLE (#1), HANDLE NUT ASSEMBLY (#2) AND METERING CARTRIDGE (#3).
  - 2.1. REMOVE COLORED INDEX BUTTON (#1C) FROM HANDLE (#1A)
  - 2.2. LOOSEN SET SCREW (#1B) IN HANDLE WITH 3/32" ALLEN WRENCH
  - 2.3. PULL UP ON HANDLE TO REMOVE FROM STEM (#2C) OF HANDLE NUT ASSEMBLY (#2)
  - 2.4. REMOVE HANDLE NUT ASSEMBLY (#2) USING 1-1/8" HEX 6-POINT SOCKET
  - 2.5. REMOVE METERING CARTRIDGE (#3) BY LIFTING OUT OF VALVE BODY (#8). THE METERING CARTRIDGE MAY BE "FLOATED" OUT OF THE VALVE BODY USING WATER PRESSURE IF ACCESS IS AVAILABLE.
3. FASTEN VALVE BODY TO PIPING BY APPROPRIATE MEANS.
4. FLUSH SUPPLY LINES AGAIN PRIOR TO INSTALL METERING CARTRIDGE AND HANDLE ASSEMBLY.
5. PLACE SHOWER SLEEVE (#5) OVER VALVE BODY (#8)
6. INSTALL WALL ESCUTCHEON (#7A) OVER SHOWER SLEEVE (#5). TIGHTEN SET SCREW USING 1/8" ALLEN WRENCH.
7. INSTALL METERING CARTRIDGE (#3) BY SLIDING INTO VALVE BODY (#8). RED SEAT WASHER END OF METERING CARTRIDGE WILL ENTER VALVE BODY FIRST.
8. INSTALL HANDLE NUT ASSEMBLY (#2)
  - 8.1. PLACE HANDLE NUT ASSEMBLY (#2) ONTO VALVE BODY (#8). TIGHTEN CAP (#2F) WITH 1-1/8" HEX 6-POINT SOCKET UNTIL NO WATER IS LEAKING FROM UNDER THE HANDLE NUT ASSEMBLY WHEN THE FAUCET IS RUNNING. DO NOT OVER TIGHTEN
9. INSTALL HANDLE (#1)
  - 9.1. REMOVE COLORED HOT/COLD INDEX (#1C) FROM HANDLE (#1A)
  - 9.2. LOOSEN SETSCREW (#1B) USING 3/32" ALLEN WRENCH.
  - 9.3. SLIDE HANDLE ONTO STEM (#2C)
  - 9.4. PRESS DOWN ON HANDLE (#1A) TO HOLD HANDLE ONTO STEM (#2C) AND TIGHTEN SETSCREW (#1B) USING 3/32" ALLEN WRENCH. DO NOT OVERTIGHTEN.
  - 9.5. PRESS COLORED HOT/COLD INDEX (#1C) INTO HANDLE.

PAGE 1 OF 4

# MAINTENANCE

---

1. YOUR ZURN SHOWER VALVE HAS A HIGHLY POLISHED NICKEL CHROME PLATED FINISH. CLEAN WITH SOAP AND WATER OR A MILD CLEANER WHICH IS SAFE FOR CHROME PLATING. DO NOT USE ACIDS OR TOILET BOWL CLEANER AS THEY WILL DAMAGE THE FINISH.
2. METERING CARTRIDGE (#3) REMOVAL AND REPLACEMENT
  - 2.1. REMOVE COLORED INDEX BUTTON (#1C) FROM HANDLE (#1A)
  - 2.2. LOOSEN SET SCREW (#1B) IN HANDLE WITH 3/32" ALLEN WRENCH
  - 2.3. PULL UP ON HANDLE TO REMOVE FROM STEM (#2C) OF HANDLE NUT ASSEMBLY (#2)
  - 2.4. REMOVE HANDLE NUT ASSEMBLY (#2) USING 1-1/8" HEX 6-POINT SOCKET
  - 2.5. REMOVE METERING CARTRIDGE (#3) BY LIFTING OUT OF VALVE BODY (#8). THE METERING CARTRIDGE MAY BE "FLOATED" OUT OF THE VALVE BODY USING WATER PRESSURE IF ACCESS IS AVAILABLE.
  - 2.6. INSPECT METERING CARTRIDGE (#3) FOR WORN PARTS, DAMAGED PARTS AND ANY CONTAMINATION THAT MAY BE PREVENTING THE METERING CARTRIDGE FROM MOVING FREELY OR SEATING. OTHER THAN CLEANING ANY TRAPPED DEBRIS. THERE ARE NO SERVICEABLE PARTS IN THE METERING CARTRIDGE. CONTAMINATED OR DAMAGED METERING CARTRIDGE ASSEMBLIES SHOULD BE REPLACED.
  - 2.7. FOLLOW INSTALLATION INSTRUCTION STEPS 7 THROUGH 9 TO RE-INSTALL THE METERING CARTRIDGE, HANDLE NUT ASSEMBLY AND HANDLE.
3. IT MAY BE NECESSARY TO REPLACE OR BACK FLUSH THE INTEGRAL SHANK FILTER (#4) PERIODICALLY TO REMOVE COLLECTED SEDIMENT AND DEBRIS.
  - 3.1. INTEGRAL SHANK FILTER (#4), IS REMOVED USING A 1/4" ALLEN WRENCH.

# ADJUSTING THE CYCLE TIME

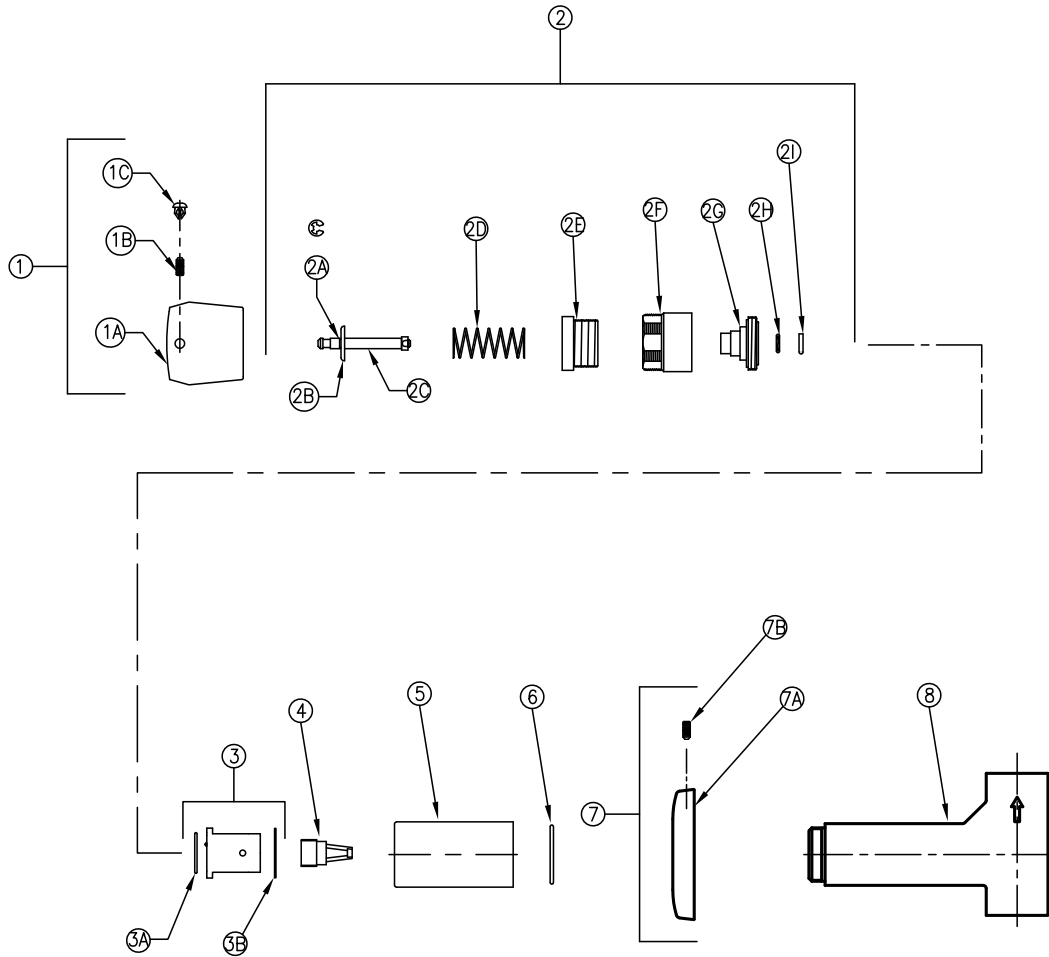
---

1. METERING SHOWER VALVES ARE FACTORY PRESET FOR A 25 SECOND MINIMUM CYCLE AT 80 PSI.
2. ACTUATE FAUCET 3 TO 5 TIMES TO REMOVE ANY TRAPPED AIR IN THE SUPPLY LINE AND TIME THE METERING CYCLE
3. REMOVE THE HANDLE (#1) ASSEMBLY PER MAINTENANCE INSTRUCTIONS 2.1 THROUGH 2.3.
4. INCREASE CYCLE TIME BY TIGHTENING THE ADJUSTMENT NUT (#2E) 1/2 TURN CLOCKWISE USING 1-1/8" HEX 6 POINT SOCKET. TIGHTENING THE ADJUSTMENT NUT COMPLETELY WILL RESULT IN THE MAXIMUM CYCLE TIME. DECREASE CYCLE TIME BY LOOSENING ADJUSTMENT NUT 1/2 TURN COUNTERCLOCKWISE. CHECK FOR DESIRED CYCLE TIME BY ACTUATING FAUCET WITH HANDLE (#1) INSTALLED.

# REPLACEMENT PARTS

---

G60522	METERING HANDLE ASSEMBLY
G60561	HANDLE NUT ASSEMBLY
G67800	METERING CARTRIDGE ASSEMBLY
G61994	SHOWER VALVE ESCUTCHEON
G67788	SHANK FILTER ASSEMBLY



### Z87300-CWO / Z7130 PARTS LIST

ITEM	PART NUMBER	DESCRIPTION	QTY	ITEM	PART NUMBER	DESCRIPTION	QTY
1	G60522	Metering Handle Assembly	1	2G	60456001	Stem Housing	1
1A	60601003	Metering Handle	1	2H	62499107	O-Ring	1
1B	62705001	Setscrew	1	2I	60458001	O-Ring Retainer	1
1C	G60558	Metering Index Buttons - H, C, T	1	3	G67800	Metering Cartridge Assembly	1
	60460001	Hot Index	1	3A	58155020	O-Ring	1
	60460002	Cold Index	1	3B	81241001	Washer	1
	60460003	Tempered Index	1	4	G67788	Integral Shank Filter	1
2	G60561	Handle Nut Assembly	1	5	61524001	Shower Sleeve	1
2A	60465001	E-Ring	1	6	58155024	O-Ring	1
2B	60450001	Spring Seat	1	7	G61994	Shower Valve Escutcheon	1
2C	60451003	Stem	1	7A	65557001	Wall Escutcheon	1
2D	60447001	Spring	1	7B	66873001	Set Screw	1
2E	60446001	Adjustment Nut	1	8	92239001	Shower Valve Body	1
2F	60452001	Cap	1				

## Metering Shower Valve Trouble Shooting Guide

Problem	Cause	Solution
No water dispensing from shower valve.	Supply stops not open.	Open supply stops.
	Filter assembly (item 4) contaminated.	Shut off water supply. Remove filter assembly (G67788) to clean and/or replace. Filter is located internally within shower body under metering cartridge.
Shower Valve is shutting off too quickly	Timing nut (item 2E) requires adjustment.	Remove handle using 3/32" Allen wrench. Rotate timing nut down (CW) to lengthen handle stroke and increase cycle time.
	Metering cartridge (item 3) is overly contaminated or damaged.	Replace metering cartridge G67800 per Installation and Maintenance guide.
Shower valve is running too long or will not shut off	Timing nut (item 2E) requires adjustment.	Remove handle using 3/32" Allen wrench. Rotate timing nut up (CCW) to shorten handle stroke and decrease cycle time.
	Metering cartridge (item 3) is overly contaminated or damaged.	Replace metering cartridge G67800 per Installation and Maintenance guide.
	Integral shank filter (item 4) is overly contaminated.	Replace or back flush the integral shank filter G67788 per Installation and Maintenance guide.
Handle becoming loose with normal usage.	Handle nut (item 2) is not adequately tightened.	Tighten handle nut using 1-1/8" hex 6 point socket to create seal and seat metering cartridge. Do not over tighten.
	Handle (item 1) not seated properly when installed.	Loosen set screw in handle with 3/32" Allen wrench. While pressing down on handle to seat on handle nut stem, re-tighten set screw in handle.