



# Z5792.205.00

## "Full Stall Pint", 1/8 gpf, Battery Powered, Ultra Low Consumption Urinal System

TAG \_\_\_\_\_



Z5792.205.00

### Z5792 Series

- Zurn One ultra low consumption urinal system designed for optimal performance between Zurn fixture and Zurn flush valve to save water while exceeding industry performance standards
- 1/8 gallons per flush [0.5 Liters per flush]
- Vitreous china
- High efficiency washout flushing action
- Over 85% water savings over standard 1.0 gpf [4.0 Lpf] system
- Pressure compensating internal flow regulator
- Floor mounted full stall urinal
- 3/4" top spud
- Complete with 1-1/4" outlet trap assembly
- Z8734 beehive urinal strainer included
- Shipping Weight: 115 lbs.

### ENGINEERING SPECIFICATION:

**Z5792.205.00 EcoVantage® Battery Powered Ultra Low Consumption Full Stall System-** System comes complete with exposed ZEG6003AV high efficiency flushometer valve and vitreous china full stall urinal. The system is designed to perform to industry standards with as little as 1/8th gallon per flush. Valve is operated by an infrared convergence-type proximity sensor with smart technology, powered by 4 "AA" batteries, furnished with vandal resistant chrome plated metal housing, chloramine resistant internal seals, and reversible cover. Valve features an internal flow regulator to maintain constant flow rates independent of line pressures and an in-line filter to protect the valve from debris within the water. Complete with high pressure vacuum breaker, one piece hex coupling nut, adjustable tailpiece, spud coupling and flange for top spud connection. Control stop has internal siphon-guard protection, vandal resistant stop cap, sweat solder kit, and a cast wall flange with set screw. Vitreous china full stall urinal is supplied with 3/4" top spud, beehive outlet strainer, and 1-1/4" outlet trap assembly necessary for passing hydraulic performance tests.

*These dimensions and specifications are subject to change without notice.*

Fixture dimensions meet ANSI/ASME standards A112.19.2-2003 and CAN/CSA B45 requirements when installed with provided outlet trap assembly.

Meets the American Disabilities Guidelines and ANSI A117.1 requirements.



This space is for Architectural/engineering Approval

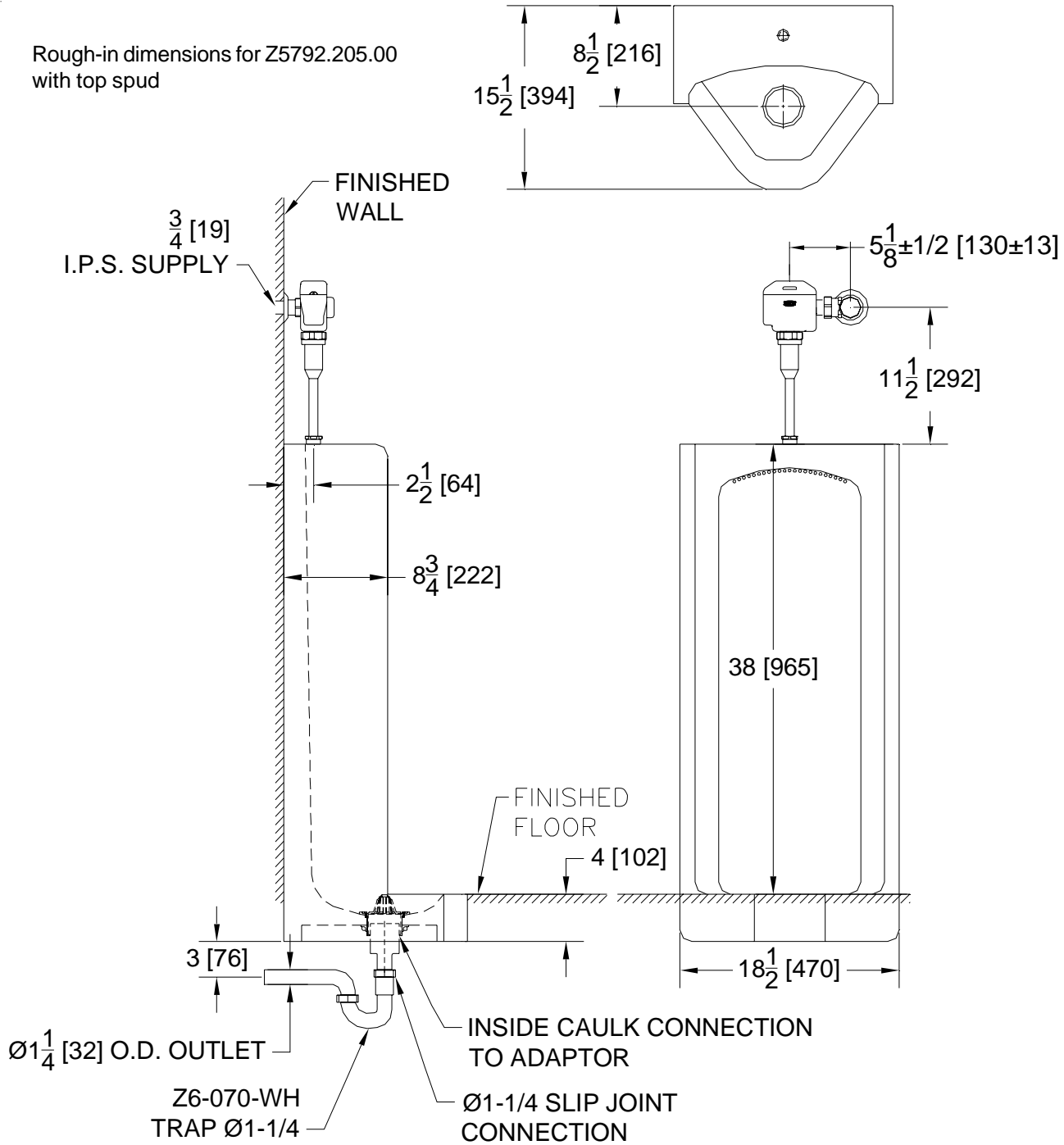


# Z5792.205.00

## "Full Stall Pint", 1/8 gpf, Battery Powered, Ultra Low Consumption Urinal System Rough-In

TAG \_\_\_\_\_

Rough-in dimensions for Z5792.205.00  
with top spud



*These dimensions and specifications are subject to change without notice.*

Fixture dimensions meet ANSI/ASME standard A112.19.2-2003 and CAN/CSA B45 requirements when installed with provided outlet trap assembly.

Meets the American Disabilities Guidelines and ANSI A117.1 requirements.



**Zurn Plumbing Products Group** Commercial Brass and Fixtures Operation  
2640 South Work Street · Falconer, NY 14733 · Phone: 716-665-1132 · Fax: 716-665-1135 · www.zurn.com