

# AQUASPEC® FAUCETS

MODEL - Z86600-XL SERIES  
4"[102] CENTERSET



## TECHNICAL INFORMATION

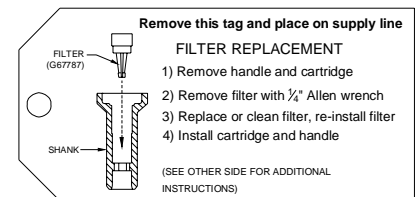
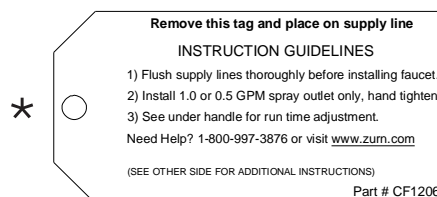
**FLOW:** 0.25 GPC MAXIMUM; PRESET AT FACTORY TO 10 TO 15 SECONDS @ 80 PSI ADJUSTABLE  
**MAXIMUM PRESSURE:** 80 PSI  
**MAXIMUM TEMPERATURE:** 140° F  
OPERATION - 5 LB FORCE MAXIMUM UP TO 80 LBS PSI  
CARTRIDGE STYLE - ZURN METERING CARTRIDGE  
- CAN USE QUARTER TURN CERAMIC DISK CARTRIDGE

**IMPORTANT** THE WATER SUPPLY LINES MUST BE THOROUGHLY FLUSHED BEFORE INSTALLATION TO PREVENT FOREIGN MATTER AND DEBRIS FROM CLOGGING AND/OR DAMAGING INTERNAL COMPONENTS

**IMPORTANT** THE FAUCET HAS AN INTEGRAL SHANK FILTER ASSEMBLY INSTALLED IN THE BODY UNDER THE METERING CARTRIDGE TO PREVENT FOREIGN MATTER AND DEBRIS FROM DAMAGING THE FAUCET. THE INTEGRAL FILTER MAY BE REMOVED TO BE BACK-FLUSHED AND CLEANED IF INSUFFICIENT FLOW IS DETECTED. THE INTEGRAL SHANK FILTER ASSEMBLY MUST BE RE-INSTALLED AFTER SERVICING TO ENSURE PROPER FUNCTIONING OF THE METERING CARTRIDGE.

## \* INSTALLATION INSTRUCTIONS

1. THE WATER SUPPLY LINE MUST BE THOROUGHLY FLUSHED BEFORE FAUCET INSTALLATION.
2. REMOVE FAUCET BODY FROM CARTON AND APPLY PLUMBERS PUTTY TO UNDERSIDE OF BODY.
3. PLACE FAUCET ON SINK AND INSTALL MOUNTING NUTS (#8A) ONTO SHANKS FROM UNDER SINK.
4. HAND TIGHTEN MOUNTING NUTS (#8A). MAKE SURE FAUCET IS CENTERED PROPERLY. DO NOT OVER TIGHTEN, YOU COULD DAMAGE THE FIXTURE.
5. ATTACH LAVATORY SUPPLY TO THE OUTLET OF THE SUPPLY STOP AND CONNECT TO FAUCET WITH RISER NUT
6. REMOVE MAINTENANCE TAG FROM SPOUT END AND ATTACH TO SHANK OF FAUCET UNDER SINK FOR FUTURE REFERENCE \* .
7. OPTIONAL - GRID STRAINER (-G)/HANDICAP OFFSET GRID DRAIN (-GH):  
INSTALL GRID STRAINER OR HANDICAP OFFSET GRID DRAIN IN SINK OUTLET AND PLUMB WASTE CONNECTION.
8. TURN SUPPLY WATER ON AND OPERATE THE FAUCET WHILE CHECKING FOR LEAKS
10. METERING CARTRIDGE IS FACTORY PRESET FOR A 10 TO 15 SECOND CYCLE AT 80 PSI, IF ADJUSTMENT IS NECESSARY, SEE "ADJUSTING THE CYCLE TIME" SECTION (PAGE 2).



ZURN INDUSTRIES, LLC ♦ COMMERCIAL BRASS OPERATION ♦ 2640 SOUTH WORK STREET ♦ FALCONER NY 14733

Phone: 1-800-997-3876 ♦ Fax: 1-919-775-3541 ♦ [www.zurn.com](http://www.zurn.com)

In Canada: ZURN INDUSTRIES LIMITED ♦ 3544 Nashua Drive ♦ Mississauga, Ontario L4V1L2 ♦ Phone: 905/405-8272 Fax: 905/405-1292

# MAINTENANCE

---

1. YOUR ZURN AQUASPEC FAUCET HAS A HIGHLY POLISHED NICKEL CHROME PLATED FINISH. CLEAN WITH SOAP AND WATER OR A MILD CLEANER WHICH IS SAFE FOR CHROME PLATING. DO NOT USE ACIDS OR TOILET BOWL CLEANER AS THEY WILL DAMAGE THE FINISH.
2. METERING CARTRIDGE (#3) REMOVAL AND REPLACEMENT (SEE SERVICE VIDEO AT [WWW.ZURN.COM/OPERATIONS/AQUASPEC/PAGES/SERVICEVIDEOMENU.ASP](http://WWW.ZURN.COM/OPERATIONS/AQUASPEC/PAGES/SERVICEVIDEOMENU.ASP))
  - 2.1. REMOVE COLORED INDEX BUTTON (#1C) FROM HANDLE (#1A)
  - 2.2. LOOSEN SET SCREW (#1B) IN HANDLE WITH 3/32" ALLEN WRENCH
  - 2.3. PULL UP ON HANDLE TO REMOVE FROM STEM (#2C) OF HANDLE NUT ASSEMBLY (#2)
  - 2.4. REMOVE HANDLE NUT ASSEMBLY (#2) USING 1-1/8" HEX 6-POINT SOCKET
  - 2.5. REMOVE METERING CARTRIDGE (#3) BY LIFTING OUT OF FAUCET BODY (#7). IT MAY BE NECESSARY TO OPEN THE SUPPLY STOP SLIGHTLY TO ALLOW WATER PRESSURE TO PUSH THE METERING CARTRIDGE UPWARD.
  - 2.6. INSPECT METERING CARTRIDGE (#3) FOR WORN PARTS, DAMAGED PARTS AND ANY CONTAMINATION THAT MAY BE PREVENTING THE METERING CARTRIDGE FROM MOVING FREELY OR SEATING. OTHER THAN CLEANING ANY TRAPPED DEBRIS, THERE ARE NO SERVICEABLE PARTS IN THE METERING CARTRIDGE. CONTAMINATED OR DAMAGED METERING CARTRIDGE ASSEMBLIES SHOULD BE REPLACED.
  - 2.7. REVERSE STEPS 2.1 THROUGH 2.5 FOR RE-ASSEMBLY. TIGHTEN CAP (#2F) WITH 1-1/8" HEX 6-POINT SOCKET UNTIL NO WATER IS LEAKING FROM UNDER THE HANDLE NUT ASSEMBLY WHEN THE FAUCET IS RUNNING. HOLD DOWN HANDLE (#1) WHILE TIGHTENING SET SCREW (#1B) TO ENSURE PROPER SEATING
3. IT MAY BE NECESSARY TO REPLACE OR BACK FLUSH THE INTEGRAL SHANK FILTER CARTRIDGE AND AERATOR PERIODICALLY TO REMOVE COLLECTED SEDIMENT AND DEBRIS
  - 3.1 THE INTEGRAL SHANK FILTER (#4) MAY BE REMOVED BY USING A 1/4" ALLEN WRENCH. CLEAN OR REPLACE AS REQUIRED.

---

## ADJUSTING THE CYCLE TIME ON ZURN METERING FAUCET

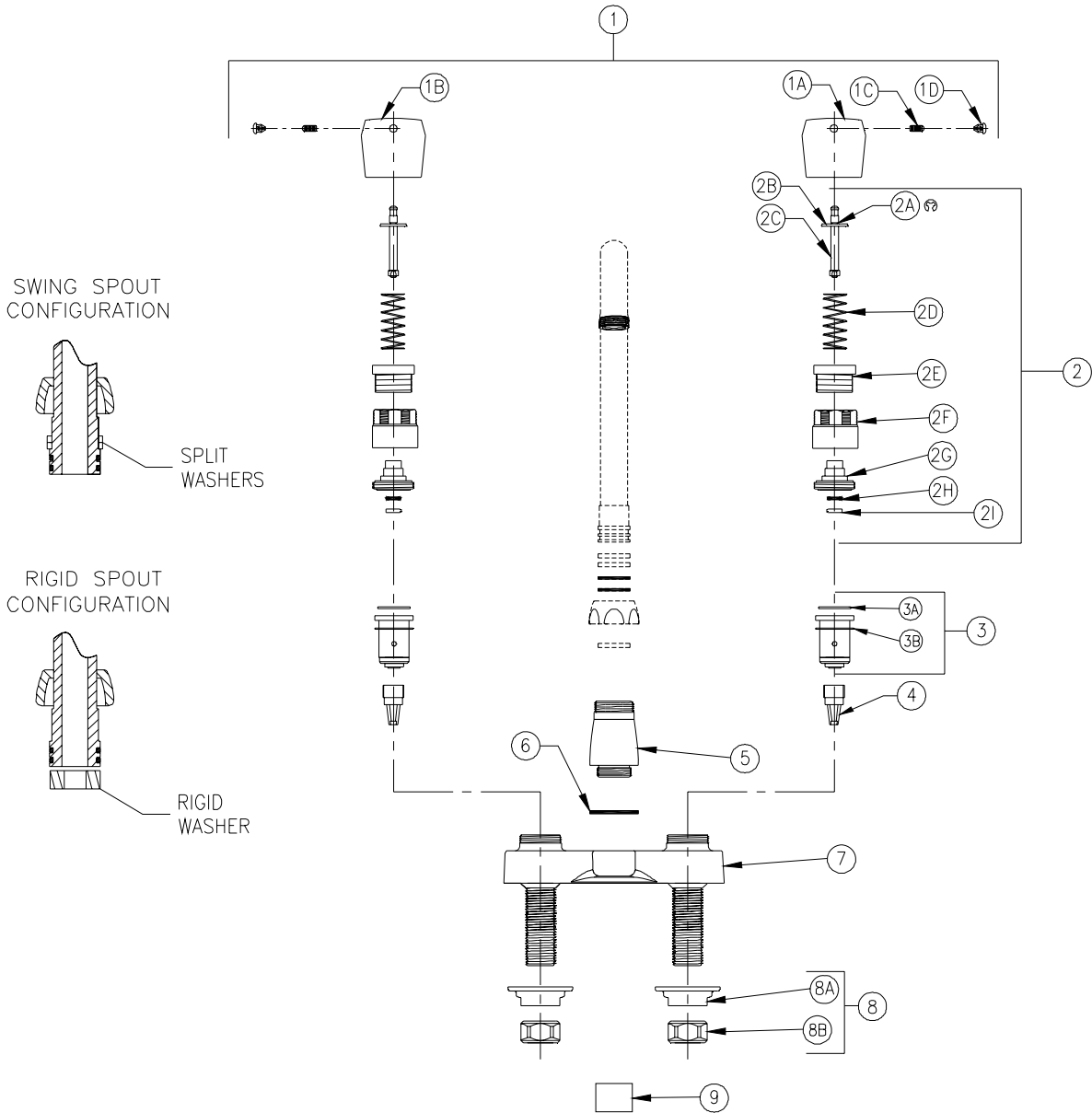
(SEE SERVICE VIDEO AT [WWW.ZURN.COM/OPERATIONS/AQUASPEC/PAGES/SERVICEVIDEOMENU.ASP](http://WWW.ZURN.COM/OPERATIONS/AQUASPEC/PAGES/SERVICEVIDEOMENU.ASP))

1. METERING FAUCETS ARE FACTORY PRESET FOR A 10 TO 15 SEC. CYCLE AT 80 PSI.
2. ACTUATE FAUCET 3 TO 5 TIMES TO REMOVE ANY TRAPPED AIR IN THE SUPPLY LINE OR FAUCET
3. REMOVE HANDLE (#1) PER INSTRUCTIONS IN MAINTENANCE SECTION 2.1 THROUGH 2.3 TO EXPOSE ADJUSTMENT NUT (#2E)
4. INCREASE CYCLE TIME BY TIGHTENING ADJUSTMENT NUT (#2E) 1/2 TURN CLOCKWISE. DECREASE CYCLE TIME BY LOOSENING ADJUSTMENT NUT 1/2 TURN COUNTERCLOCKWISE. CHECK FOR DESIRED CYCLE TIME BY ACTUATING FAUCET WITH HANDLE (#1) IN PLACE ON STEM (#2C)

## REPLACEMENT PARTS

HANDLE NUT ASSEMBLY	G60561
METERING CARTRIDGE ASSEMBLY	G61754
HANDLE ASSEMBLY	G60522
INTEGRAL SHANK FILTER ASSEMBLY	G67787

\* Installation Instructions are revised frequently.  
Please access website for the latest revision.



Z866A0-XL PICTURED

Item	Part Number	Description	Qty.	Item	Part Number	Description	Qty.
1	G61830	Dual Metering Handle Assy.	1	2I	60458001	O-Ring Retainer	1
1A	60601002	Cold Metering Handle	1	3	G61754	Metering Cartridge	2
1B	60601001	Hot Metering Handle	1	3A	58155020	O-Ring	1
1C	62705001	Set Screw	2	3B	81241001	Washer	1
1D	G60562	Metering Index Buttons-H,C	1	4	G67787	Integral Shank Filter	2
	60460001	Hot Index	1	5	60467005	Base	1
	60460002	Cold Index	1	6	58155019	O-Ring	1
2	G60561	Handle Nut Assembly	2	7	60454004	4" Centerset Gooseneck Body	1
2A	60465001	E-Ring	1	8	G60502	Mounting Hardware	1
2B	60450001	Spring Seat	1	8A	59530002	Mounting Nut	2
2C	60451003	Stem	1	8B	59532001	1/2" NPSM Riser Nut	2
2D	60447001	Spring	1	9	G66696	3/4"-27 Femal Spray Outlet	1
2E	60446001	Adjustment Nut	1				
2F	60452001	Cap	1				
2G	60456001	Stem Housing	1				
2H	62499107	O-Ring	1				

## METERING FAUCET TROUBLE SHOOTING GUIDE

<b><u>PROBLEM</u></b>	<b><u>CAUSE</u></b>	<b><u>SOLUTION</u></b>
No water dispensing from faucet.	Supply stops not open.	Open supply stops.
	Spray outlet (item 9) contaminated.	Remove spray outlet (item 9) to clean and/or replace.
	Filter assembly (item 4) contaminated.	Shut off water supply. Remove filter assembly (item 4) to clean and/or replace. Filter located internally within faucet body under metering cartridge.
Faucet is shutting off too quickly	Timing nut (item 2E) requires adjustment.	Remove handle (item 1) using 3/32" Allen wrench. Rotate timing nut (item 2E) down (CW) to lengthen handle stroke and increase cycle time.
	Metering cartridge (item 3) is damaged.	Replace metering cartridge (item 3) G61754 per Installation and Maintenance guide, page 2
Faucet is running too long or will not shut off	Timing nut (item 2E) requires adjustment.	Remove handle (item 1) using 3/32" Allen wrench. Rotate timing nut (item 2E) up (CCW) to shorten handle stroke and decrease cycle time.
	Metering cartridge (item 3) is overly contaminated or damaged.	Replace metering cartridge (item 3) G61754 per Installation and Maintenance guide, page 2
	Spray outlet (item 9) is not installed <u>or</u> incorrect spray outlet (item 9) installed.	Install 1.0 GPM or 0.5 GPM spray outlet (item 9). Facuet may not shut off with flow rate > 1.0 GPM.
	Handle nut (item 2) is not adequately tightened	Tighten handle nut (item 2) using 1-1/8" hex 6 point socket to create seal and seat metering cartridge. Do not over tighten.