

# AQUASPEC<sup>®</sup> FAUCETS

MODEL - Z87100 SERIES  
Z87100-HS SERIES  
KITCHEN SINK FAUCET



## TECHNICAL INFORMATION

---

**FLOW:** 2.2 GPM [8.3 L] PRESSURE COMPENSATING AERATOR \*

**MAXIMUM PRESSURE:** 125 PSI

**MAXIMUM TEMPERATURE:** 180° F

**HANDLE NUT TORQUE:** 15-20 FT - LBS.

**CARTRIDGE STYLE:** QUARTER TURN CERAMIC DISK

\* OTHER AERATORS AVAILABLE BY REQUEST

---

## INSTALLATION INSTRUCTIONS

1. REMOVE FAUCET BODY(#6) FROM CARTON AND APPLY PLUMBERS PUTTY TO UNDERSIDE OF BODY. (REFER TO FIGURE 1).
2. PLACE FAUCET ON SINK AND REMOVE MOUNTING NUTS (#7A) FROM BAG G60502.
3. HAND TIGHTEN MOUNTING NUTS (#7A) FROM UNDER SINK. MAKE SURE FAUCET IS CENTERED PROPERLY. **DO NOT OVER TIGHTEN.**
4. OPTIONAL HOSE SPRAY (REFER TO FIGURE 2)  
REMOVE HOSE SPRAY ASSEMBLY (#11) FROM PACKAGING. REMOVE MOUNTING NUT FROM HOSE SPRAY HOLDER (#11B) AND INSERT HOSE SPRAY HOLDER THROUGH FIXTURE. ASSEMBLE MOUNTING NUT ONTO HOSE SPRAY HOLDER AND TIGHTEN. DO NOT OVER TIGHTEN. INSERT THREADED END OF HOSE SPRAY (#11A) THROUGH HOSE SPRAY HOLDER (#11B) AND CONNECT HOSE SPRAY (#11A) TO DIVERTER ADAPTOR (#10). TIGHTEN TO CREATE A WATER TIGHT CONNECTION.
5. ATTACH LAVATORY SUPPLIES TO FAUCET WITH RISER NUTS (ITEM #7B).
6. OPTIONAL GRID STRAINER (-G) / HANDICAP OFFSET GRID DRAIN (-GH)  
INSTALL GRID STRAINER IN SINK OUTLET AND PLUMB WASTE CONNECTION.
7. INSTALL SPOUT INTO BASE AND TIGHTEN NUT (SEE VIEWS FOR SWING/RIGID CONNECTION).
8. TURN SUPPLY WATER ON AND OPERATE FAUCET CHECKING FOR LEAKS.
9. REPLACE HANDLE SCREWS AND COLOR INDEX BUTTONS.
10. INSTALL AERATOR INTO FAUCET AND HAND TIGHTEN. IT MAY BE NECESSARY TO UNSCREW AND CLEAN AERATOR AT START-UP.

ZURN INDUSTRIES, LLC. ♦ COMMERCIAL BRASS OPERATION ♦ 5900 ELWIN BUCHANAN DRIVE ♦ SANFORD NC 27330  
Phone: 1-800-997-3876 ♦ Fax: 919-775-3541 ♦ World Wide Web: [www.zurn.com](http://www.zurn.com)  
In Canada: ZURN INDUSTRIES LIMITED ♦ 3544 Nashua Drive ♦ Mississauga, Ontario L4V1L2 ♦ Phone: 905-405-8272 Fax: 905-405-1292

# MAINTENANCE

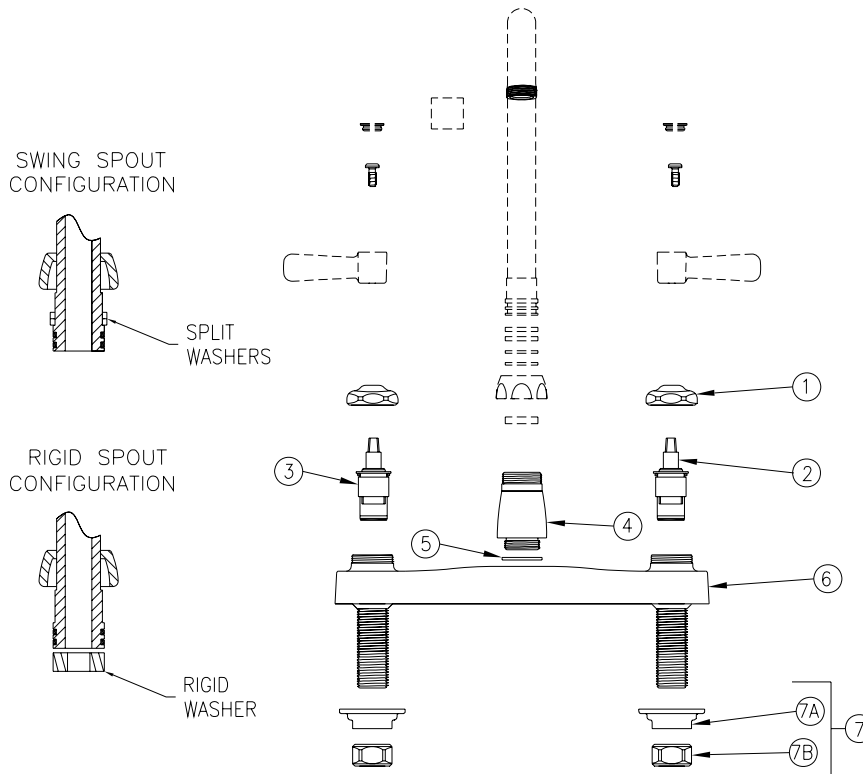
1. YOUR ZURN AQUASPEC FAUCET HAS A HIGHLY POLISHED NICKEL CHROME PLATED FINISH. CLEAN WITH SOAP AND WATER OR A MILD CLEANER WHICH IS SAFE FOR CHROME PLATING. DO NOT USE ACIDS OR TOILET BOWL CLEANER AS THEY WILL DAMAGE THE FINISH.
2. AQUASPEC FAUCETS CONTAIN CERAMIC DISK CARTRIDGES WHICH REQUIRE NO MAINTENANCE. TO REMOVE THE CARTRIDGE, SHUT THE WATER OFF, LOOSEN THE HANDLE NUTS AND PULL UP ON THE CARTRIDGE.

# REPLACEMENT PARTS

COLD WATER CARTRIDGE	59517001	HOSE SPRAY AND HOLDER G66607
HOT WATER CARTRIDGE	59517002	
INDEX BUTTONS	G60500	

Z871B1 PICTURED

FIGURE 1

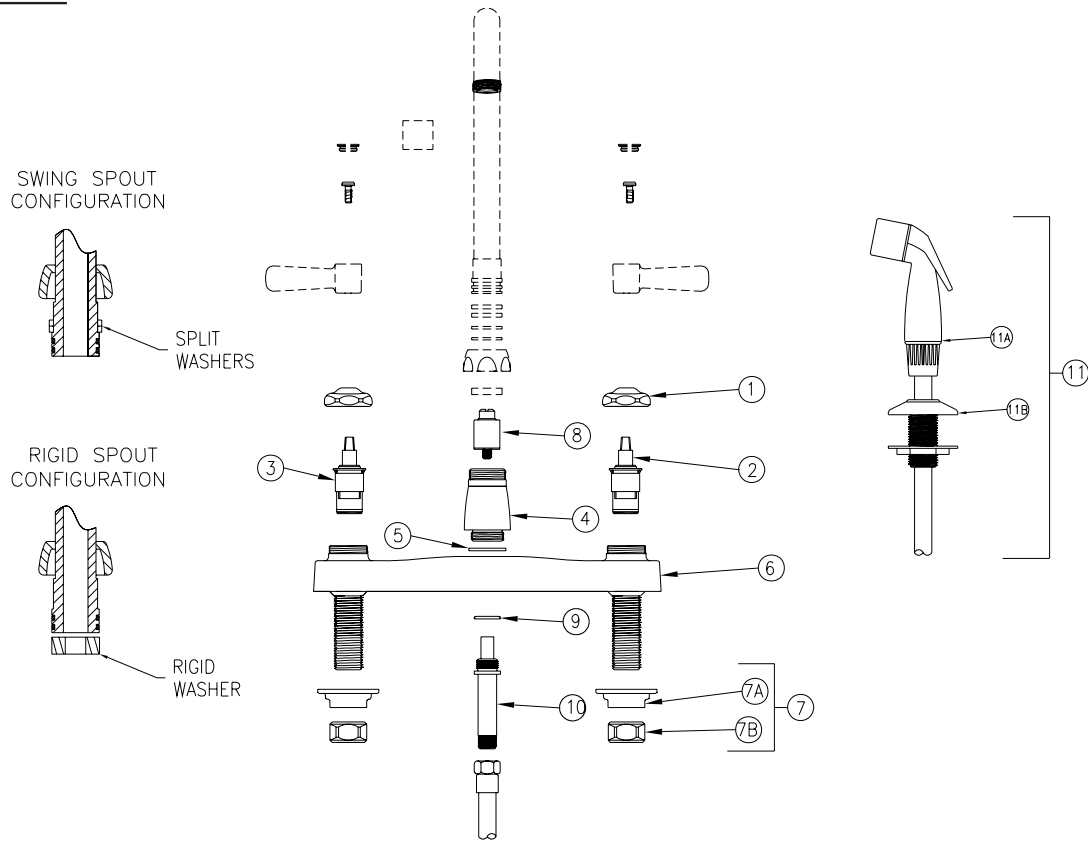


## Z87100 PARTS LIST

ITEM	QTY	ITEM	QTY
1 59440001	2	5 58155019	1
2 59517001	1	6 60545001	1
3 59517002	1	7 G60502	1
4 60467001	1	7A 59530002	2
		7B 59532001	2

# Z871B1-HS PICTURED

**FIGURE 2**



## Z87100-HS PARTS LIST

ITEM	QTY	ITEM	QTY
1	59440001	HANDLE NUT	2
2	59517001	SHORT COLD CARTRIDGE	1
3	59517002	SHORT HOT CARTRIDGE	1
4	60467001	BASE	1
5	58155019	O-RINGS	1
6	60545001	KITCHEN DECK BODY	1
7	G60502	NUTS	1
7A	59530002	MOUNTING NUT	2
7B	59532001	1/2"[13]NPSM RISER NUT	2
8	60486001	DIVERTER	1
9	58155015	O-RING	1
10	60943001	DIVERTER ADAPTOR	1
11	G66607	HOSE ASS'Y	1
11A	61319001	HOSE SPRAY	1
11B	61319002	SPRAY HOSE HOLDER	1