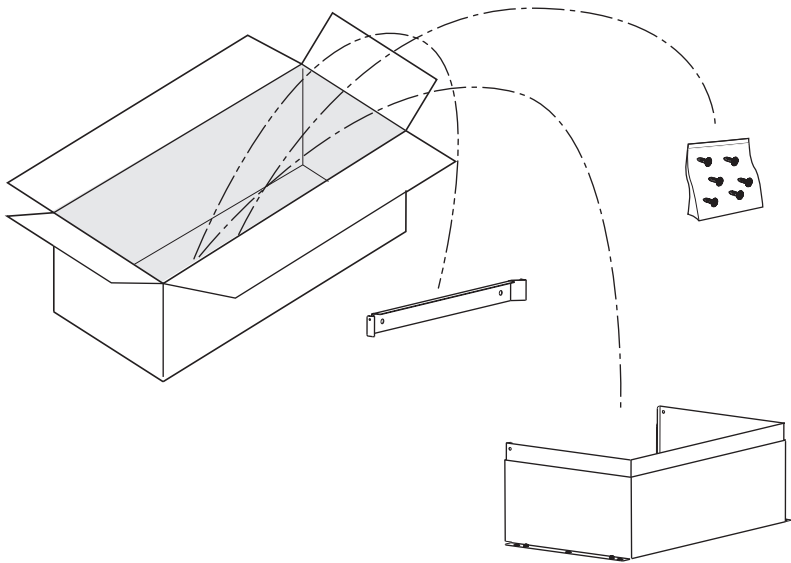


## Duct Cover Short, Long

Z1C-01HZ

For use with Horizon range hood



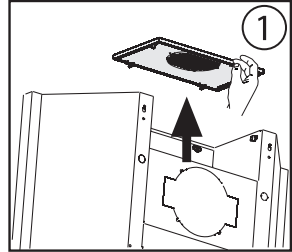
**ENGLISH.....2**  
**FRANÇAIS.....3**

**Mounting the duct cover**  
**Fixation des cheminées**

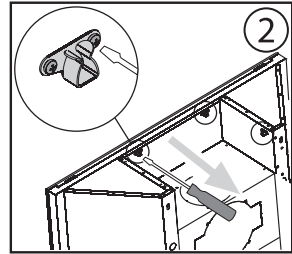
# Installation - Mounting the Duct Cover

## ■ MOUNTING THE DUCT COVER

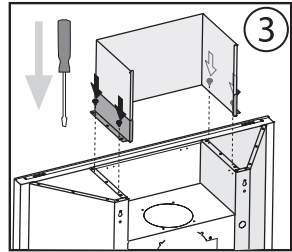
1. Unclip the top cover. Fig.1



2. Unscrew and remove the four clips on the hood Fig. 2

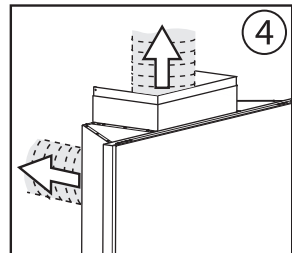


3. Position the chimneys on the hood as described in fig.3 and fasten the parts using the (4) screws provided.

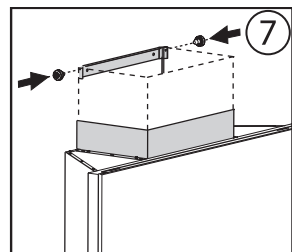
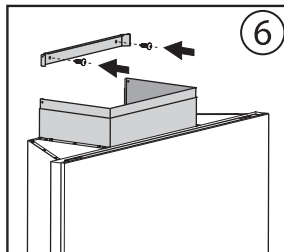
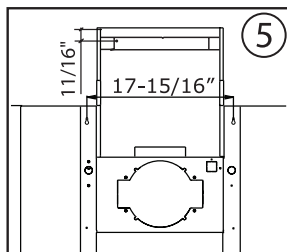


4. Place correct size ducting for your installation (not supplied) to the hood and secure to the blower collar with aluminum duct tape. Fig. 4

5. Secure duct cover bracket to top of wall just below the ceiling observing the distance shown in Fig.5, and using (2) screws provided. See Fig.6



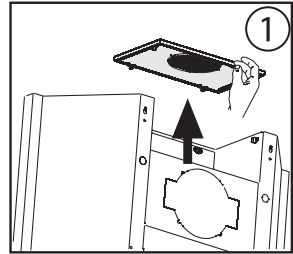
6. Extend top duct cover up and secure to the duct cover bracket using (2) screws. See Fig. 7



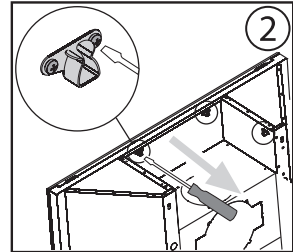
# Installation – Fixation De Cheminees

## ■ FIXATION DES CHEMINEES

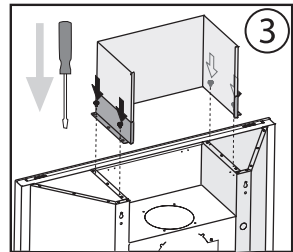
1. Détacher le chapeau. Fig.1



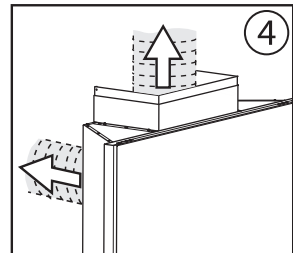
2. Enlever les 4 accrochages sur la hotte en dévissant les vis. Fig. 2



3. Positionnez les cheminées dans le logement spécial sur la hotte., et les fixer avec les 4 vis. Fig. 3



4. Positionnez le conduit (non fourni) proportionné à l'installation sur la hotte et fixez-le au collier sur la bouche de la sortie d'air du moteur en utilisant le ruban aluminium spécial. Fig. 4



5. Fixez l'étrier à la paroi à peine sous le plafond en utilisant les (2) vis. Fig. 5 en respectant la distance indiquée en Fig. 6

