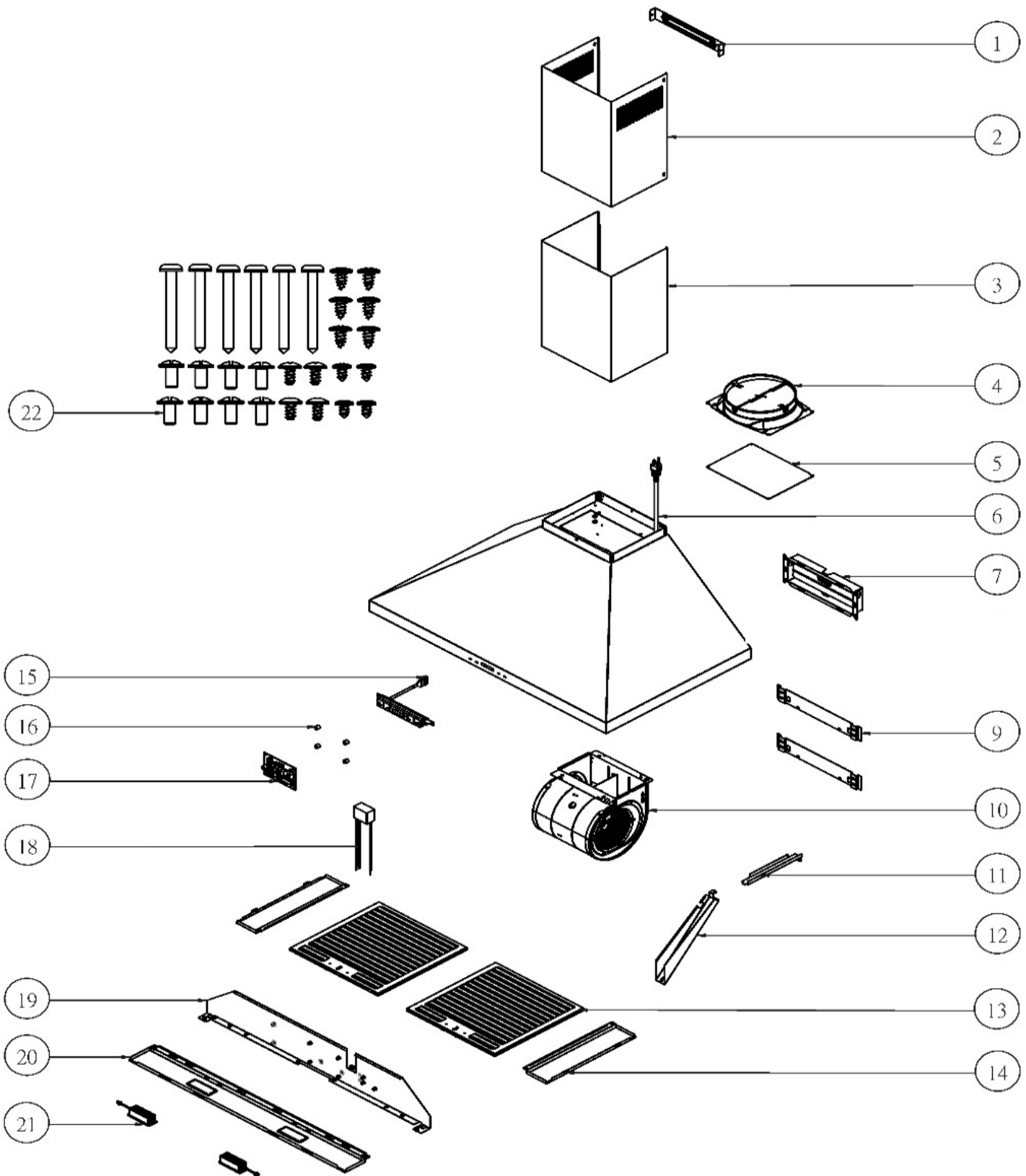


# ZSI-E30DS ZSI-E36DS



# ZEPHYR

# Siena Wall

## ZSI-E30DS, ZSI-E36DS

| Ref # | Part #   | Description                    | Qty. |
|-------|----------|--------------------------------|------|
| 1     | 54110050 | Duct Cover Bracket             | 1    |
| 2     | 50050145 | Upper Duct Cover               | 1    |
| 3     | 50050146 | Lower Duct Cover               | 1    |
| 4     | 54050078 | 8in Round Collar               | 1    |
| 5     | 56210120 | Top Ducting Cover              | 1    |
| 6     | 11030174 | Power Cord                     | 1    |
| 7     | 54060011 | Rectangular Collar with Damper | 1    |
| 9     | 54140146 | Rear Ducting Bracket           | 2    |
| 10    | 12120104 | Motor                          | 1    |
| 11    | 54210011 | Wiring Cover                   | 1    |
| 12    | 54210046 | Wiring Cover                   | 1    |
| 13    | 50210053 | Hybrid Baffle Filter           | 2    |
| 14    | 50120250 | Side Panel, ZSI-E36DS          | 2    |
| 15    | 11000184 | ICON Touch LCD Switch Assembly | 1    |
| 16    | 56240022 | PCB Spacer                     | 4    |
| 17    | 11010191 | Control Board                  | 1    |
| 18    | 12050028 | Capacitor                      | 1    |
| 19    | 50140219 | Internal Panel, ZSI-E30DS      | 1    |
| 19    | 50140220 | Internal Panel, ZSI-E36DS)     | 1    |
| 20    | 50110453 | Light Panel, ZSI-E30DS         | 1    |
| 20    | 50110454 | Light Panel, ZSI-E36DS         | 1    |
| 21    | Z0B0067  | LumiLight LED, TruHue, 6W      | 2    |
| 22    | 05000175 | Hardware Packet                | 1    |