

Sempter

The Sempter collection is cutting-edge in every sense of the term. Cut glass shaded pendants in various shapes and sizes, hung at varying heights with a sleek Chrome finish, the Sempter family will add a modern touch to any contemporary decor.



| A |



| B |



| C |



| D |

	Product	Bulbs/Wattage	W	H	Overall-H	Cord Length	Ceiling Plate Size
A	911MP3	(1) 60W-m	6.25"	6.75"	126.5"	118"	4.75" diameter
B	911MP2	(1) 60W-m	4.75"	8.75"	128.5"	118"	4.75" diameter
C	911MP1	(1) 60W-m	4"	10.75"	130.5"	118"	4.75" diameter
D	911-6	(6) 60W-m	18"	18"	132.75"	shortest cord 100", longest cord 118"	13.75" diameter

Finish

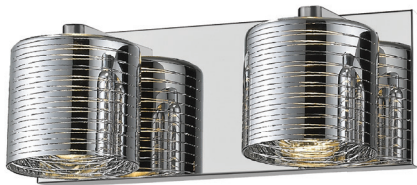
 Chrome



| E |

	Product	Bulbs/Wattage	Source Lumens	CCT	CRI	L/ext.	W	H	Wall Plate Size
E	911-1S-LED	(1) 4W-G9 (incl.)	410LM	3000K	>90	5"	4.75"	4.75"	4.75"W x 4.75"H
F	911-2V-LED	(2) 4W-G9 (incl.)	820LM	3000K	>90	5"	12.5"	4.75"	12.5"W x 4.75"H
G	911-3V-LED	(3) 4W-G9 (incl.)	1230LM	3000K	>90	5"	20.5"	4.75"	20.5"W x 4.75"H
H	911-4V-LED	(4) 4W-G9 (incl.)	1640LM	3000K	>90	5"	28.25"	4.75"	28.25"W x 4.75"H
I	911-5V-LED	(5) 4W-G9 (incl.)	2050LM	3000K	>90	5"	36.25"	4.75"	36.25"W x 4.75"H

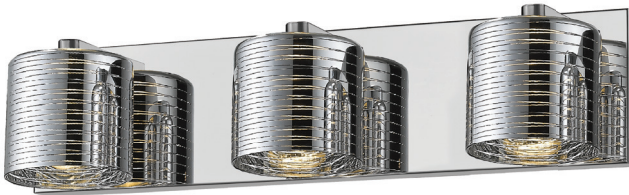
These fixtures can NOT be mounted up or down



| F |



Color Temperature - 3000K
CRI (Color Rendering Index) >90
Dimmable Light Source
Replaceable Components



| G |



| H |



| I |