




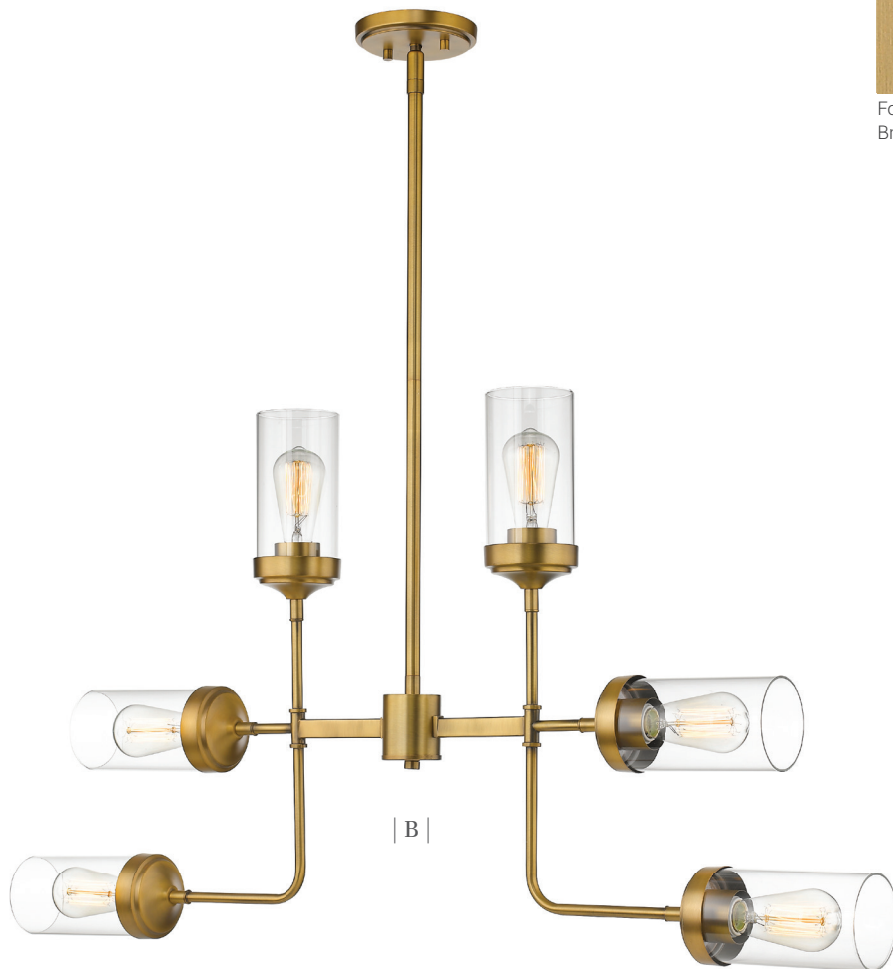
Calliope

Contemporary Industrial best describes the Calliope collection. Clear glass shades pair with vintage bulbs for a warm glow, the hardware and fittings are finished in either Foundry Brass, or Polished Nickel. Many different sizes and configurations are available.

Finish

 Foundry
 Brass



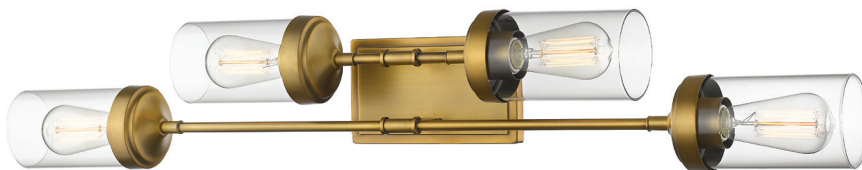
| A |



| B |



| C |



| D |

	Product	Bulbs/Wattage	L/ext.	W	H	Overall-H	Chain/Rods Length	Wire Length	Ceiling Plate Size
A	617-1S-FB	(1) 60W-m	5.25"	4.5"	17.5"	---	---	---	4.5" x 7.75"
B	617-6FB	(6) 60W-m	5"	41.5"	22.25"	58.75"	3x12" + 1x6" + 1x3" rods		5" diameter
C	617-2S-FB	(2) 60W-m	5.25"	20.75"	4.5"	---	---	---	7.75" x 4.5"
D	617-4V-FB	(4) 60W-m	5.25"	38"	6.25"	---	---	---	7.75" x 4.5"

Vintage bulbs shown are NOT included



| E |



| F |



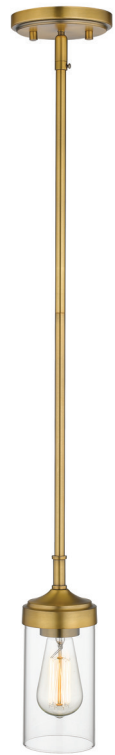
| G |

	Product	Bulbs/Wattage	W	H	Overall-H	Chain/Rods Length	Wire Length	Ceiling Plate Size
E	617-8FB	(8) 60W-m	32	25"	62.25"	3x12" + 1x6" + 1x3" rods	110"	5" diameter
F	617-20FB	(20) 60W-m	42"	34.75"	67.25"	3x12" + 1x6" + 1x3" rods	110"	5" diameter
G	617-12FB	(12) 60W-m	36"	27.75"	63.75"	3x12" + 1x6" + 1x3" rods	110"	5" diameter

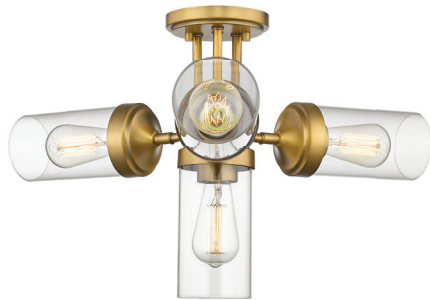
Vintage bulbs shown are NOT included



| H |



| I |



| J |



| K |

	Product	Bulbs/Wattage	L/ext.	W	H	Overall-H	Chain/Rods Length	Wire Length	Ceiling Plate Size
H	617-8L-FB	(8) 60W-m	14"	40"	14.5"	86.25"	10x12" + 2x6" + 2x3" rods	110"	14" x 4.75"
I	617MP-FB	(1) 60W-m	---	5"	9.5"	57.25"	3x12" + 1x6" + 1x3" rods	110"	5" diameter
J	617SF-FB	(4) 60W-m	---	22.5"	13.75"	---	---	---	5" diameter
K	617-12L-FB	(12) 60W-m	14"	60"	15.25"	87"	10x12" + 2x6" + 2x3" rods	110"	25.25" x 4.75"

Vintage bulbs shown are NOT included