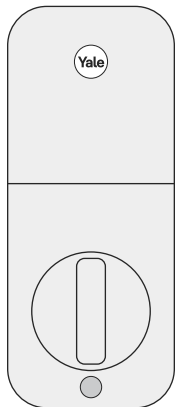




Yale Code™

Keyed YED210



Install Your Lock

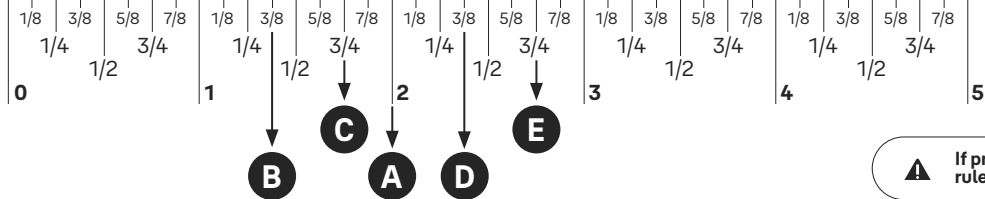
Follow the step-by-step Installation Guide in this manual (pages 8-19).



Installation should be completed with the door open to easily gain access to both sides of the door.

Set Up and Use Your Lock

Create and store up to 50 entry codes, lock with one touch, use Auto-Lock and more (pages 20-27).



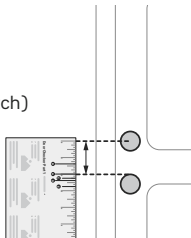
If printed from electronic file, measure ruler to check scale. Set print scale to 1:1.

Door Checker Part 1

See Reverse for Part 2 →

Measure Clearance

- ✓ Greater than A
- ✗ Less than A
(Your door is not a match)



A. 2" minimum clearance between top of the door knob and center of deadbolt hole.

Measure Door Thickness

- ✓ A, B or C
- ✗ Less than B or greater than A
(Your door is not a match)

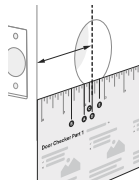


B-C. 1-3/8" - 1-3/4" door thickness; use **black screws** provided.

A. 1-3/4" - 2" door thickness; use 2" screws (sold separately).

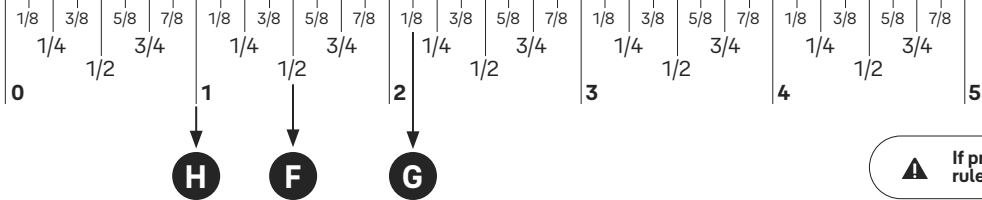
Measure Backset

- ✓ Equals D or E
- ✗ Doesn't equal D nor E
(Your door is not a match)



D. 2-3/8" backset, use out of box latch setting.

E. 2-3/4" backset, adjust latch setting (Step 2, point 1 of this manual).



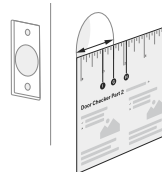
⚠ If printed from electronic file, measure ruler to check scale. Set print scale to 1:1.

Door Checker Part 2

See Reverse for Part 1 →

Measure Face Bore

- ✓ Equals F or G
- ✎ Less than F
(Adjust diameter to F or G)
- ✗ Greater than G
(Your door is not a match)

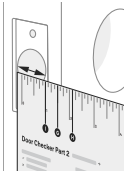


- F.** 1-1/2" face bore diameter.
- G.** 2-1/8" face bore diameter.

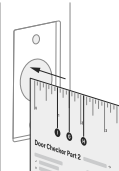
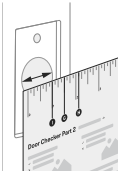
Measure Edge Bore and Strike Pocket

- ✓ Equals H
- ✎ Less than H
(Adjust diameter to H)
- ✗ Greater than H
(Your door is not a match)

Door (Edge Bore)



Frame (Strike Pocket)



Diameter

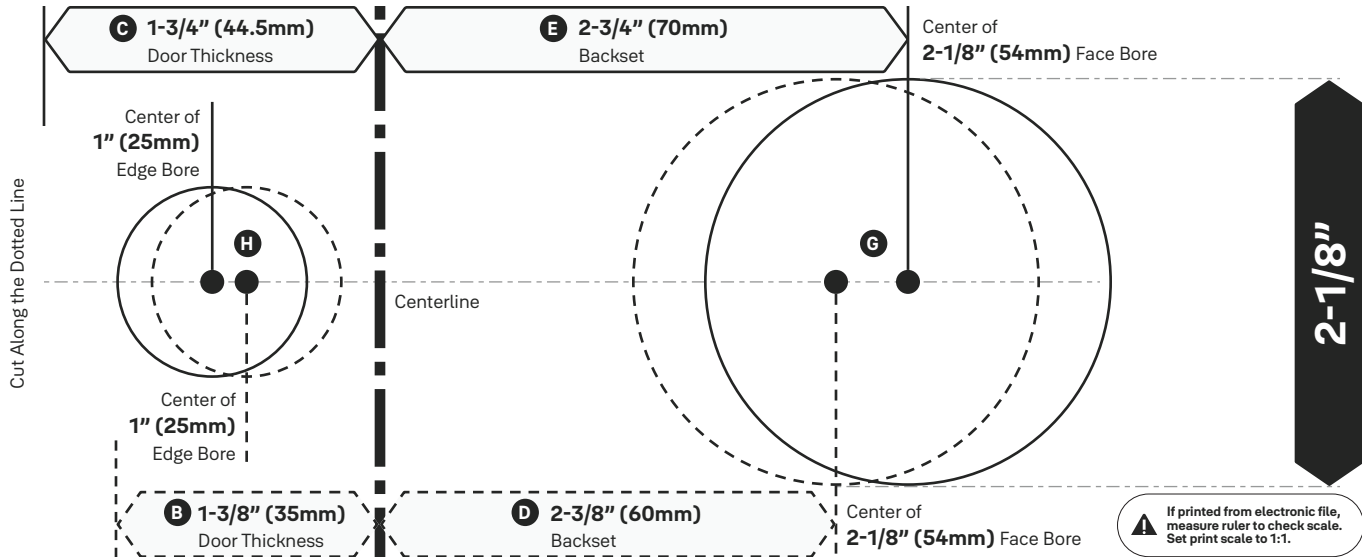
Depth

- H.** 1" edge bore diameter;
1" strike pocket diameter and depth.

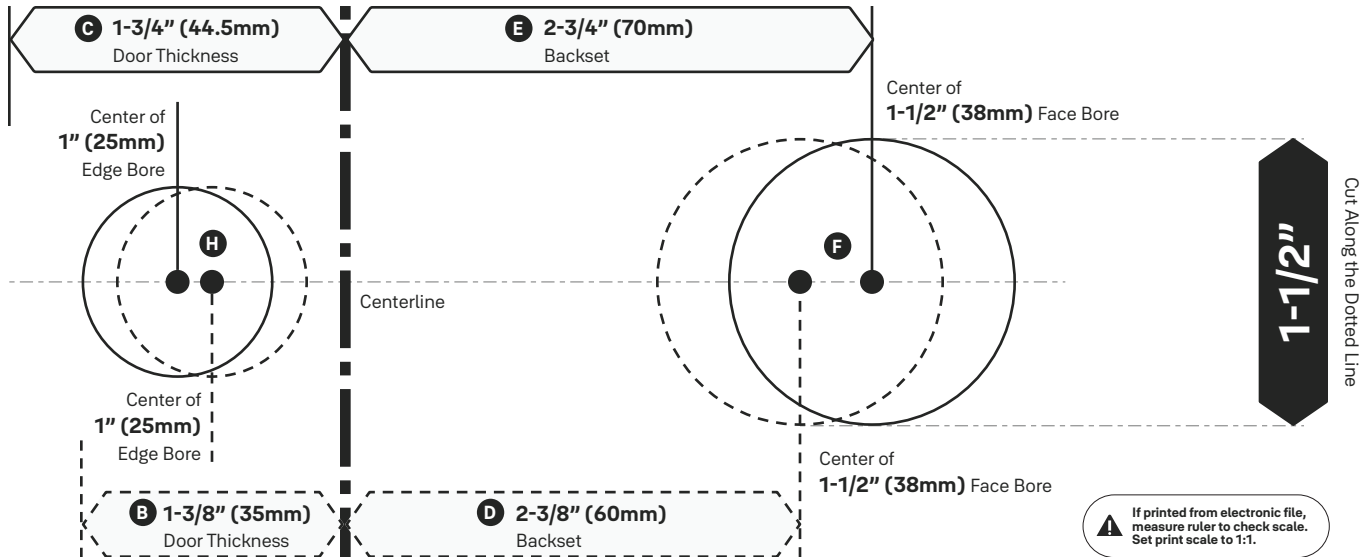
⚠ Minimum strike pocket depth is 1".

Cut Along the Dotted Line

Marking Template for 2-1/8" (54mm) Face Bore

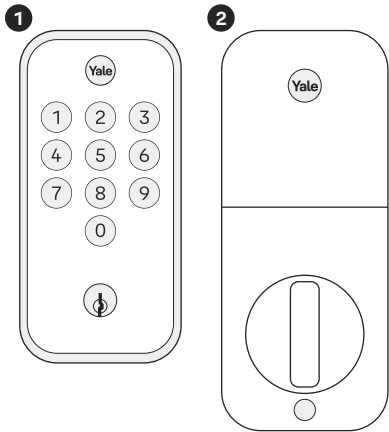


Marking Template for 1-1/2" (38mm) Face Bore

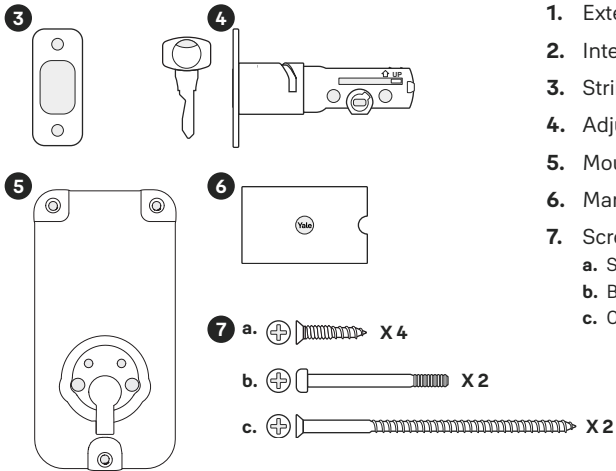


In the Box

Lock



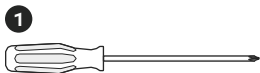
Hardware



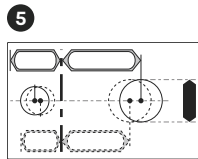
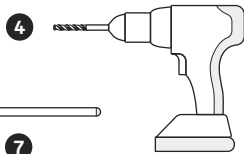
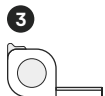
1. Exterior Keypad
2. Interior Lock
3. Strike Plate
4. Adjustable Deadbolt & Key
5. Mounting Plate
6. Manual
7. Screws
 - a. Strike Plate and Deadbolt Screws
 - b. Black Screw Set
 - c. Optional Security Strike Plate Screws

Installation Guide

Required Tools



You Might Also Need



1. **Phillips Head Screwdriver**
2. **Door Checker**
(tear off pages 3-4 of this manual)
3. **Tape Measure**
4. **Drill**
5. **Marking Template**
(tear off pages 5-6 of this manual)
6. **Pencil**
7. **Wood Mortise Chisel**
8. **Utility Knife**
9. **Level**

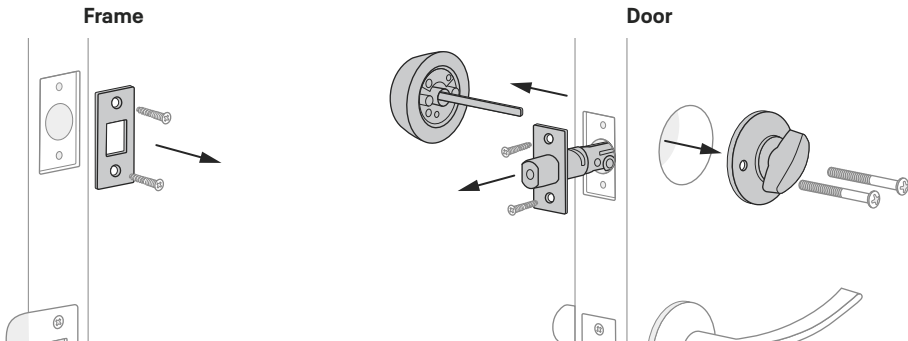


Failure to follow the Installation Guide precisely could result in damage to the product, voiding the factory warranty, and could lead to failure of the product to provide access.

1a Remove Existing Deadbolt

If you have a new door, please proceed to step 1b. →

If you have a deadbolt on your door, use the diagram to help you remove it.

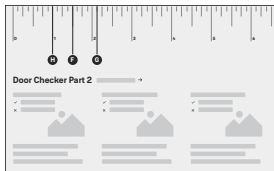
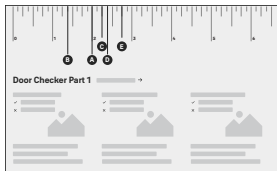


Keep your old deadbolt until your new lock has been successfully installed.

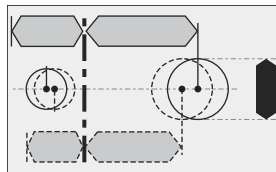
1b Check Door Measurements

If your door doesn't have holes, please proceed to step 1c. →

Tear off the **Door Checker** (pages 3-4) and follow the guidelines on **both sides** to measure each aspect of your door and frame. There are some cases when existing holes cannot be adjusted to be compatible.



✎ If you need to make adjustments, go to **step 1c** and find the closest match to each aspect of your door on the **Marking Template**.



Please do not drill any holes until you confirm that your door is compatible.

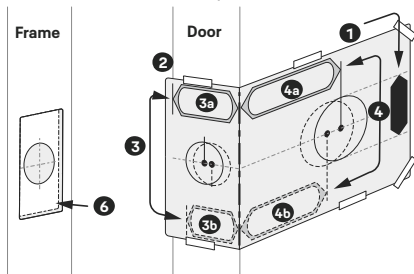
If you have confirmed that the existing holes are compatible with your new lock, please proceed to step 2 (skip step 1c).

1c Make or Adjust Holes

Skip this step if you have confirmed that the existing holes are compatible (step 1b).

1. Tear off the **Marking Template** (pages 5-6), and choose the preferred face bore diameter (**2-1/8"** or **1-1/2"**) on either side of the template.
2. Tape the Marking Template onto the door as shown.
3. Check the door thickness. It should match either the shape with **solid** outlines (**1-3/4"**), or the one with **dashed** outlines (**1-3/8"**).
 - 3a. Use **solid** lines as a template for **1-3/4"** door thickness.
 - 3b. Use **dashed** lines for **1-3/8"** door thickness.
4. Choose your preferred backset. It should match either the shape with **solid** outlines (**2-3/4"**), or the one with **dashed** outlines (**2-3/8"**).
 - 4a. Use **solid** lines as a template for **2-3/4"** backset.
 - 4b. Use **dashed** lines for **2-3/8"** backset.

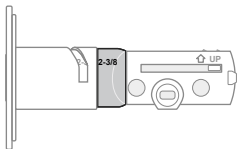
5. Drill holes in your door where marked.
6. On the door frame, align the center of the strike plate with the center of the edge bore. Trace the strike plate, then chisel to the depth of the strike plate so it sits flush with your door frame. Drill the **1"** diameter strike pocket with a minimum depth of **1"**.



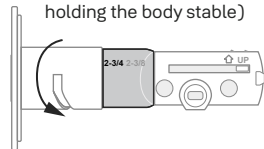
2 Install Deadbolt Latch

1. Correct deadbolt length is based on the backset. Refer to measurements **D** and **E** on the **Door Checker** (page 3) to verify backset.

D 2-3/8" Backset (Out of box)



E 2-3/4" Backset (To adjust, twist neck by holding the body stable)



2. Align strike plate with deadbolt latch.

2a. (Optional) Security screws can be used in place of the small strike plate screws.

x 2 for Deadbolt Latch
x 2 for Strike Plate
(Actual size)

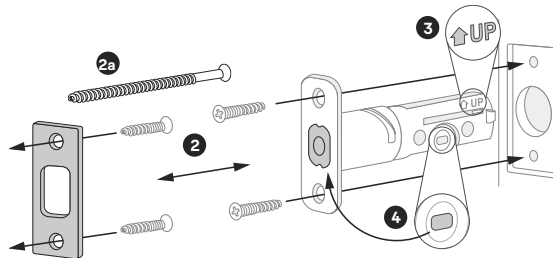


⚠ Minimum strike pocket depth is 1".

3. Make sure UP arrow on the deadbolt is facing upwards.
4. Deadbolt latch must be in an unlocked position.

Note: If the deadbolt latch is extended, use a small flathead screwdriver to rotate slot until deadbolt latch is retracted.

5. Tighten screws with a screw driver to secure the strike plate and deadbolt latch. As you tighten the screws, make sure the strike plate and deadbolt latch are aligned.



3 Install Exterior Keypad

1. Refer to measurement **G** on the **Door Checker** (page 4) to measure face bore hole. If the hole is less than 2-1/8", remove adapter by twisting it off the body of the lock.

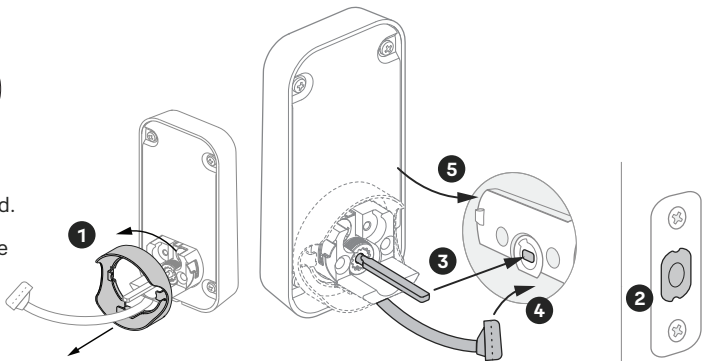


Install your lock with the door open.

Do not close your door until all the steps are completed.

2. Make sure your deadbolt latch is in an unlocked position. Refer to **step 2, point 4** (page 12) for guidance on how to retract it, if needed.
3. Make sure the tailpiece is in a horizontal position. Slide the tailpiece through the deadbolt latch slot.
4. Guide the wire cable under the deadbolt.

5. Slide the keypad in place, making sure it's on the exterior part of your door.

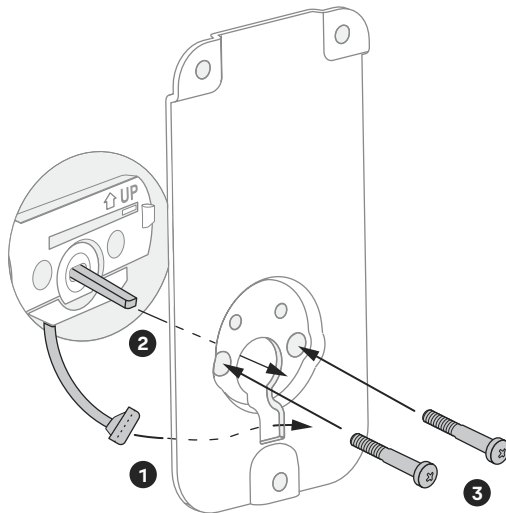


4 Install Mounting Plate

1. Route the wire cable into the designated slot in the mounting plate.
2. Slide tailpiece through the designated slot in the mounting plate.
3. Tighten screws with a screwdriver to secure the mounting plate.
As you tighten the screws, make sure the mounting plate and the exterior keypad are straight.

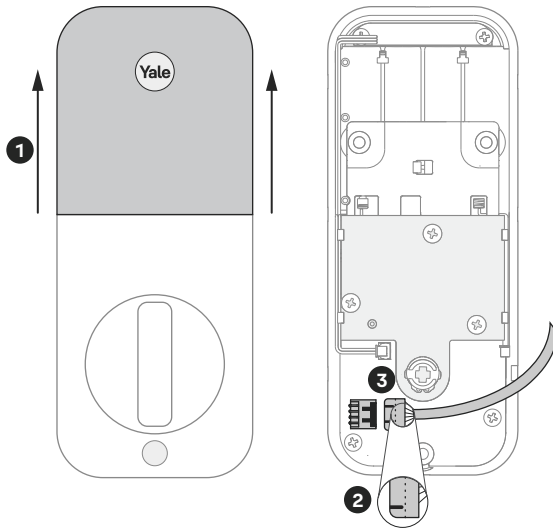


Ensure that the wire cable is not pinched to prevent it from reducing your lock's battery life.



5 Attach Wire Cable to Interior Lock

1. Remove battery cover by pulling it upwards off the body of the interior lock.
2. Make sure the tab on the cable end and the marked line faces outward.
3. Push cable into the designated slot until you hear a click.



6 Determine Lock Handing

For your lock to function properly, we need to determine which direction to rotate the thumbturn. This is called "lock handing".

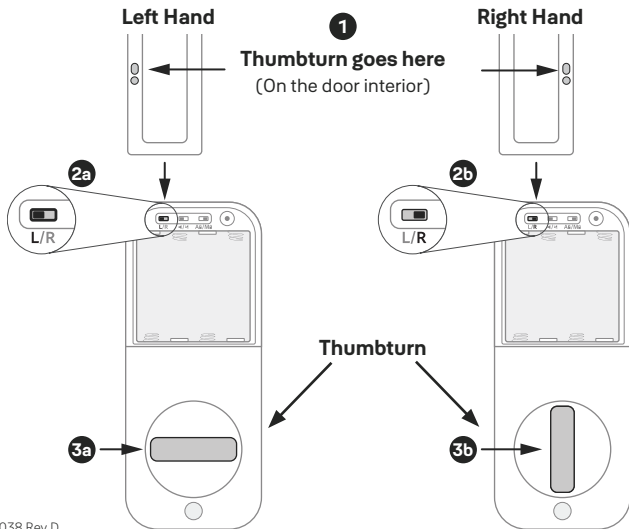
1. Look at the drawing to help you determine your hand of door.
2. Find the **Handing toggle** on the interior lock with the battery cover off and make sure it corresponds with your hand of door.
 - 2a. **L** stands for **left hand**.
 - 2b. **R** stands for **right hand**.
3. Position the thumbturn to match the handing of the door.
 - 3a. For **left** handing, position thumbturn **horizontally**.
 - 3b. For **right** handing, position thumbturn **vertically**.



If the lock is installed with the improper handing (toggle incorrect and/or thumbturn in wrong position) the lock will not function correctly. First try adjusting the handing toggle to see if that fixes the issue. If the issue is not resolved, remove the interior side of the lock and adjust the thumbturn position and reinstall.



If your door is left handed, your thumbturn is on the left.
If your door is right handed, your thumbturn is on the right.

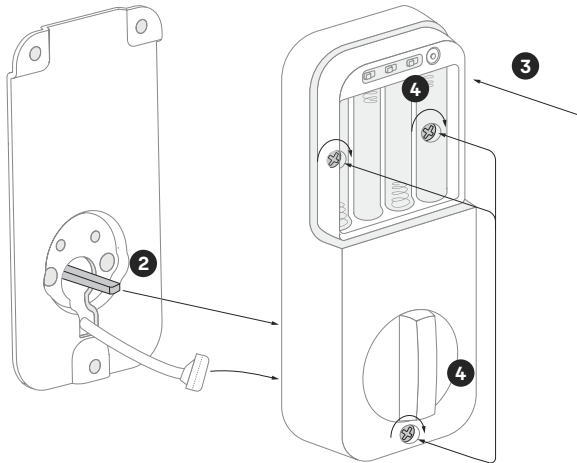


7 Install Interior Lock

1. Make sure thumbturn is positioned correctly for your hand of door. Refer to **step 6** (page 16) for guidance on how to determine it, if needed.
2. Make sure the tailpiece is in a horizontal position. Slide the tailpiece through the designated slot on the back of the thumbturn.
3. Press the lock against the mounting plate.
4. Tighten the three pre-installed screws. When fully tightened, lock should be flush to door.



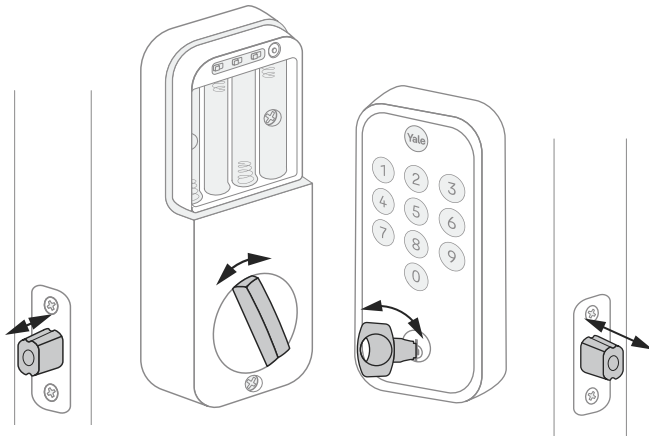
The remaining wire should be between the mounting plate and the interior lock. Ensure that the wire cable is not pinched to prevent it from reducing your lock's battery life.



8 Test Thumbturn and Key

If deadbolt latch does not lock or unlock with the **key** (from the outside) or the **thumbturn** (from the inside):

- Ensure that the deadbolt latch is centered in the face bore hole;
- Ensure that the tailpiece is inserted through deadbolt latch slot; step 3, point 3 (page 13) into the thumbturn slot; step 7, point 2 (page 17)
- Ensure thumbturn was installed in the correct position depending on the door handing step 6, point 3 (page 16).



⚠ Smooth deadbolt latch operation will enhance your battery life.

9 Install Batteries* and Set Up an Entry Code

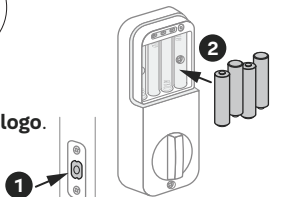
1. Before installing batteries, make sure the deadbolt latch is unlocked.
2. Install 4 AA batteries*.
3. Once batteries are inserted, the entire keypad will light up and the status LED will turn yellow. Once this happens, your lock has entered Setup Mode and you can create your first entry code.

⚠ If the yellow LED turns off, simply press the Yale logo to reenter Setup Mode.

4. Create your first entry code.

4a. Enter a **4-8 digit code**, then press the **Yale logo**.

* Batteries are not included

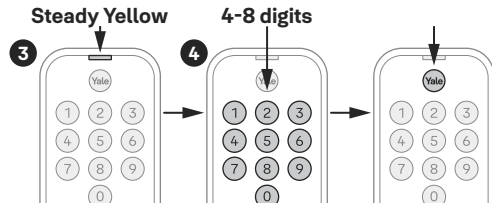


YED210-MNL-0038 Rev D

- 4b.** **Re-enter** the code, then press the **Yale logo**. If the code matches the one from step 4a, the status LED will flash green and you will hear a chime.

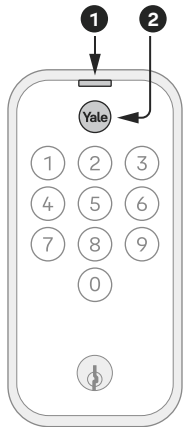
Note: Entry code will be saved and the lock will then switch to Normal Mode. See page 22 for instructions on how to create additional entry codes.

5. Replace battery cover.



Using Your Lock

Exterior Keypad



To **lock** your door

Press **Yale**

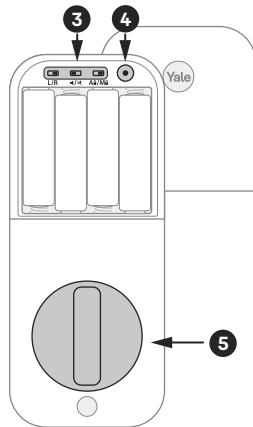
To **unlock** your door

Press **Yale** →

Enter entry code →

Press **Yale**

Interior Lock



1. **Status LED Indicator**
2. **Wake / One-Touch Locking**
3. **Toggle Features***
 - a. Lock Handing
 - b. Audio Mode
 - c. Auto-Lock
4. **Mode Button**
5. **Thumbturn**

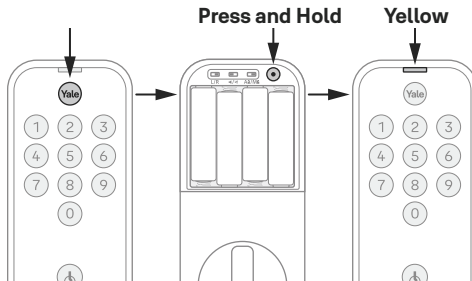
* See page 24 for more information

LED Alerts

Status LED turns steady yellow	Initial Setup Mode
Status LED turns steady green	Create Additional Entry Code Mode
Status LED turns steady red	Remove Entry Code Mode
Status LED flashes green	Success
Status LED flashes red	Failure
Status LED flashes yellow and lock beeps 9 times	Low battery. Replace all four (4) batteries with new AA alkaline batteries.
Status LED flashes red and lock beeps 9 times	Critical battery level. Replace all four (4) batteries with new AA alkaline batteries immediately.

Factory Reset

Press the **Yale logo** to wake up the lock, then **press and hold the Mode button** under the battery cover on the interior side until the status LED turns yellow and you hear a beep (roughly for 3 seconds). Lock has been factory reset and you can set up your first entry code. See step 9, point 4 (page 19) for instructions.



Create Additional Entry Codes

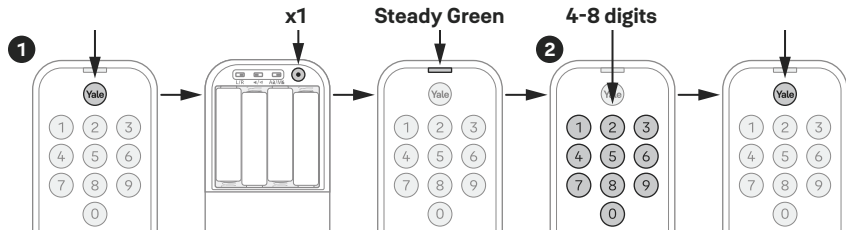
← See step 9, point 4 (page19) for instructions on how to set up your first entry code.

You can store up to 50 entry codes that are 4-8 digits long.

1. With the door open, extend the deadbolt, and press the **Yale logo**, then press the **Mode button** under the battery cover on the interior side **once**. The status LED will turn **steady green**.
2. Create an entry code.
 - 2a. Enter a **4-8 digit code**, then press the **Yale logo**.

- 2b. **Re-enter** the code, then press the **Yale logo**. If the code matches the one from step 2a, the status LED will flash and you will hear a chime.

Note: Entry code will be saved and the lock will then switch to Normal Mode.



YED210-MNL-0038 Rev D



Each entry code must be 4-8 digits long.

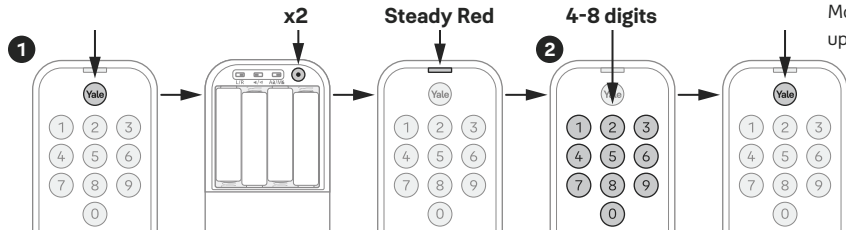
Delete Entry Codes

1. With the door open, extend the deadbolt, and press the **Yale logo**, then press the **Mode button** under the battery cover on the interior side **twice**. The status LED will turn **steady red**.
2. Delete a previously saved entry code.
 - 2a. Enter a previously saved **4-8 digit code**, then press the **Yale logo**.

- 2b. **Re-enter** the code, then press the **Yale logo**. If the code matches the one from step 2a, the status LED will flash and you will hear a chime.

Note: Entry code will be deleted and the lock will then switch to Normal Mode.

Note: If you delete the last or the only saved code, the status LED will turn steady yellow indicating that the lock has entered Setup Mode. See step 9, point 4 (page 19) for instructions on how to set up the first entry code.



Entry Codes	<ul style="list-style-type: none">• Entry Codes are used to unlock your door. Each entry code must be 4-8 digits long.• Store up to 50 entry codes.		
Toggle Features (On the interior lock under the battery cover)	Lock Handing	Default: R	<ul style="list-style-type: none">• Determine which direction (right or left) your deadbolt turns to lock. See page 16 for more information.
	Audio Mode	Default: Enabled	<ul style="list-style-type: none">• Play audio when the lock is operated.
	Auto-Lock	Default: Disabled	<ul style="list-style-type: none">• Automatically lock the deadbolt after its been unlocked for 30 seconds.
One Touch Locking	<ul style="list-style-type: none">• Lock your door with one touch by pressing the Yale logo on the lock.		
Invalid Code Lockout	<ul style="list-style-type: none">• The keypad will be disabled for 60 seconds after five consecutive invalid codes.• After 60 seconds, you may reenter the correct code.		

Lock Operations Troubleshooting

Lock does not respond.	<ul style="list-style-type: none">• Press the Yale logo to activate the keypad.• Verify contact with the logo.• Check batteries are installed and oriented correctly in battery case. Replace batteries if needed.• Check that the keypad wire is fully connected and not pinched.
Lock does not respond – door is locked and inaccessible.	<ul style="list-style-type: none">• Batteries may not have enough power. Replace batteries.• Use mechanical key to unlock the door.
Lock is on for a while then shows no reaction. LED indicator dims.	<ul style="list-style-type: none">• Batteries do not have enough power. Replace batteries.
Lock chimes indicating code acceptance but door will not open.	<ul style="list-style-type: none">• Check for any foreign objects between door and frame.• Check that the wire is firmly connected to the interior lock.
Lock responds with flashing yellow LED and 9 beeps.	<ul style="list-style-type: none">• Low battery. Replace all four (4) batteries with new AA alkaline batteries immediately.
Lock responds with flashing red LED and 9 beeps.	<ul style="list-style-type: none">• Critical battery level. Replace all four (4) batteries with new AA alkaline batteries immediately.

Lock Operations Troubleshooting

Entry code will not register.

- If LED is flashing yellow and the lock produced 9 beeps, change batteries immediately.
- If LED is flashing red and the lock produced 9 beeps, change batteries immediately.
- Verify that your entry code consists of 4 to 8 digits.
- Entry code must be entered while the keypad is in Setup Mode. For the first entry code, press Yale logo to re-enter Setup Mode. For additional entry codes, see page 22.

Upon entering an entry code and pressing the Yale logo, the status LED indicator turns red or lock times out without responding.

- Verify entered code is a valid, previously programmed, 4 to 8 digit code.

Deadbolt does not extend when locking the door with the keypad.

- Lock was not handed properly. Switch the toggle for "L/R" on the interior lock under the battery cover, if that doesn't work go back to Step 6 (page 16) and modify the thumbturn position.

Deadbolt extends when entering an entry code.

- Lock was not handed properly. Switch the toggle for "L/R" on the interior lock under the battery cover, if that doesn't work go back to Step 6 (page 16) and modify the thumbturn direction.

Lock operates but makes no sound.

- Check if the toggle for Audio Mode on the interior lock under the battery cover is set to "Disabled".

Thumbturn is difficult to turn.

- Batteries may not have enough power. Replace batteries.
- Increase depth of the deadbolt strike pocket in the frame. Make sure that the strike pocket depth is at least 1".

Hardware Troubleshooting

Deadbolt is jamming. In a jamming situation, the deadbolt will try to extend three times before status LED flashes red, keypad flashes, and lock beeps 5 times.

- After a jam, using the thumbturn or key to unlock the door may require additional pressure. After the deadbolt is in unlocked position, it should be smooth to operate. To avoid future jamming issues see the below troubleshooting steps.

Deadbolt is hitting the strike plate.

- Reposition the strike plate to align with deadbolt.

Deadbolt is not fully extending.

- Increase depth of the deadbolt strike pocket in the frame. Make sure that the strike pocket depth is at least 1".



Resistance when locking deadbolt that requires pushing or pulling on the door to align deadbolt and latch.

Adjust your existing knob, lever, or handleset strike plate. Latch engagement into the strike is the main component used for door alignment.

To adjust knob / lever / handleset strike plate:

1. Remove plate from door frame with a hand screwdriver. Note: Using an electric driver may strip screw heads or enlarge screw holes.
2. Locate tab on strike plate. Bend the tab towards surface of strike. Note: A small change may be all that is required.
3. Reinstall strike plate using a screwdriver and test again.
4. If door cannot be adjusted sufficiently with strike tab, both knob/lever/handleset latch and deadbolt could require adjustment – we suggest you contact a local locksmith for assistance.

Key won't release in unlocked position.

- Remove the interior lock and mounting plate and refer to Step 3 (page 13). Rotate the tailpiece so the keyhole is facing the direction shown . Then test the deadbolt using the key and ensure the key can be removed from the cylinder while the lock is in the unlocked position. Make sure the tailpiece is in the horizontal position and the key hole is in the direction shown  before reinstalling the mounting plate and the interior of the lock.

- This device complies with part 15 of the FCC Rules. Operation is subject to the following two conditions: (1) This device may not cause harmful interference, and (2) this device must accept any interference received, including interference that may cause undesired operation.

- CAN ICES3(A)/NMB3(A)

Warning:

Changes or modifications to this device, not expressly approved by **Yale Home** could void the user's authority to operate the equipment.

Yale Home

24/7 Support: 1-855-213-5841 • US.YaleHome.com

Yale® is a registered trademark and Yale Code™ is a trademark of Master Lock Company LLC and its affiliates. Other products' brand names may be trademarks or registered trademarks of their respective owners and are mentioned for reference purposes only. ©Copyright 2025. All rights reserved.

Reproduction in whole or in part without the express written permission of Master Lock Company LLC or its affiliates is prohibited.

Trusted Every Day

YED210-MNL-0038 Rev D