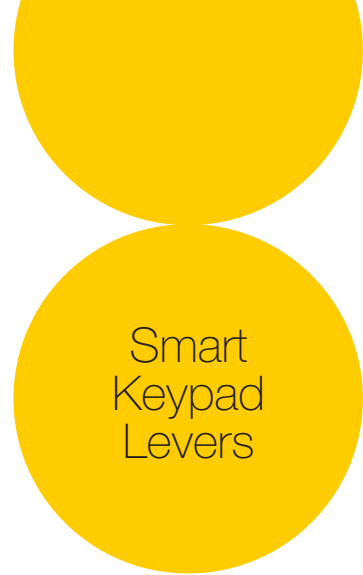




Assure Lever[®]

Collection Specifications



Smart Keypad Levers



Keyed YRL216
Key Free YRL236



Keyed YRL226
Key Free YRL256

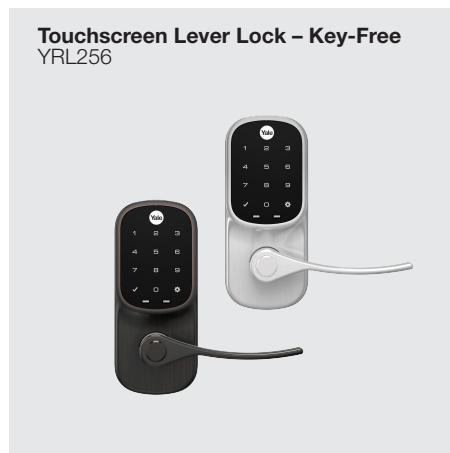
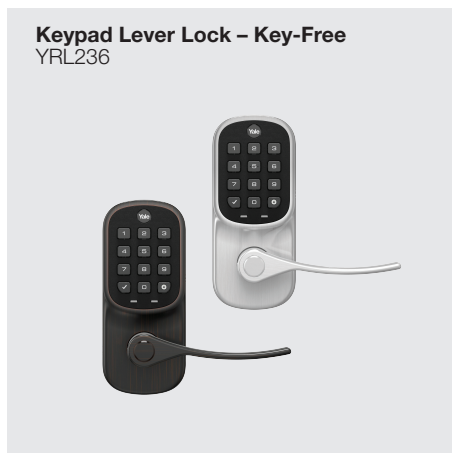
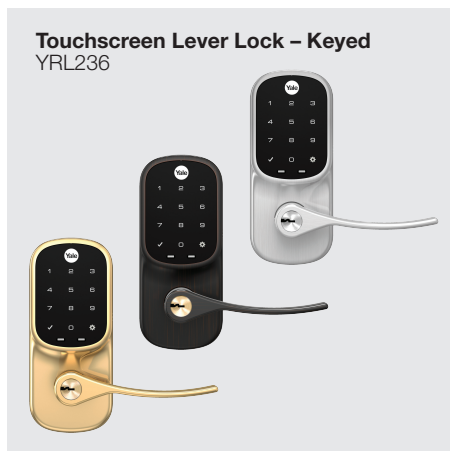
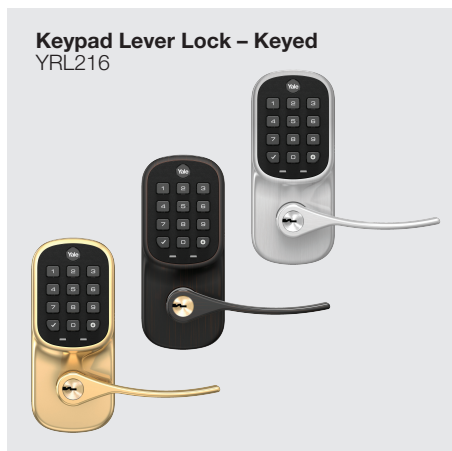


Upgrade with a Yale Smart Module



Coming Soon





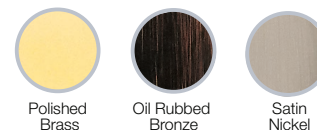
Lose Your Keys. For Good.®

The Yale Assure Levers are perfect for securing doors throughout your home that do not have a deadbolt. Available in key-free or keyed options with either push button or touchscreen keypads.

Each Assure Lever can be upgraded with your choice of Yale Smart Module. Available modules include Z-Wave Plus, Zigbee (coming soon), or Connected by August.



Available Finishes



(YRL216 and YRL226 only)

Product Numbers

		Assure Lever Keypad - Keyed YRL216	Assure Lever Touchscreen - Keyed YRL226	Assure Lever Keypad - Key Free YRL236	Assure Lever Touchscreen - Key Free YRL256
Standalone	Satin Nickel	YRL216-NR-619	YRL226-NR-619	YRL236-NR-619	YRL256-NR-619
	Polished Brass	YRL216-NR-605	YRL226-NR-605	YRL236-NR-605	YRL256-NR-605
	Oil Rubbed Bronze	YRL216-NR-0BP	YRL226-NR-0BP	YRL236-NR-0BP	YRL256-NR-0BP
Z-Wave Plus	Satin Nickel	YRL216-ZW2-619	YRL226-ZW2-619	YRL236-ZW2-619	YRL256-NR-0BP
	Polished Brass	YRL216-ZW2-605	YRL226-ZW2-605	YRL236-ZW2-605	YRL256-NR-0BP
	Oil Rubbed Bronze	YRL216-ZW2-0BP	YRL226-ZW2-0BP	YRL236-ZW2-0BP	YRL256-ZW2-0BP
ZigBee <small>Coming Soon</small>	Satin Nickel	YRL216-HA2-619	YRL226-HA2-619	YRL236-HA2-619	YRL256-HA2-619
	Polished Brass	YRL216-HA2-605	YRL226-HA2-605	YRL236-HA2-605	YRL256-HA2-605
	Oil Rubbed Bronze	YRL216-HA2-0BP	YRL226-HA2-0BP	YRL236-HA2-0BP	YRL256-HA2-0BP
Connected by August	Satin Nickel	YRL216-CBA-619	YRL226-CBA-619	YRL236-CBA-619	YRL256-CBA-619
	Polished Brass	YRL216-CBA-605	YRL226-CBA-605	YRL236-CBA-605	YRL256-CBA-605
	Oil Rubbed Bronze	YRL216-CBA-0BP	YRL226-CBA-0BP	YRL236-CBA-0BP	YRL256-CBA-0BP

Assure Lever[®]

Features and Specifications



Tamper-Proof Model

Available in 100% key-free models that can't be picked and have no keys to lose.



One-Touch Locking

Lock-up without keys by just touching the Yale logo on the keypad.



Simple Installation

Replaces existing hardware with just a screwdriver. Fits on standard doors.



Backlit Keypad

Keypad wakes with a touch and has numbers that won't wear off.



Never Get Locked Out

If the batteries die, quickly power the lock with a 9V battery.



Optional Settings

Customize auto re-lock, entry codes and tamper alarms within the lock settings.



Voice Assistance

Touchscreen models guide you through the menu in 3 languages.



Locks Automatically

Enable Auto Relock to ensure your door is always locked.



Share Access

Manage entry codes or virtual keys (with a smart home system) for people you trust.

Works with Your Smart Home*

Upgrade any Assure Lever to integrate seamlessly with your smart home or alarm system. Just plug a Yale Smart Module into the slot above the lock's battery compartment. Modules can be sold separately or included with the lock.

- Monitor, lock and unlock from anywhere
- View access history of who's entered your home
- Receive notifications on your smartphone
- Set schedules for your lock
- Create entry codes for friends and family from your smartphone
- Check to see if your door is locked, from anywhere

* Features may vary with integration system.

- Works with voice activated solutions like Amazon Alexa (some modules require compatible hub for voice integration.)

Connected by August

- Unlocks automatically as you approach via Bluetooth
- Includes Wi-Fi bridge for access anywhere
- Control and monitor with August app
- Comes with DoorSense™
- Works with Google Assistant, Amazon Alexa and Siri
- Works with Airbnb, HomeAway, IFTTT, Simplisafe and more.



Available Smart Modules





The world's favorite lock since 1840

Door Specifications

Face Bore 2 1/8"

Edge Bore 1"

Backset 2 3/8" or 2 3/4"
(adjustable latch)

Door Thickness 1 3/8" or 1 3/4"

Strike 1 1/8" x 2 3/4"

Strike Front Round Corner

Keyway KW-1 5 Pin
(keyed models come with 2 keys)

Batteries
4 AA Alkaline Batteries (Included)

Handing Reversible

Grade Tested to: ANSI/BHMA Grade 2

Inside the Box

- Yale Assure Lever
- Two Academy Levers
- Mounting Screws
- Door Template
- 4 AA Alkaline Batteries
- Installation Manual
- Yale Smart Module*
- 2 Keys (with YRL216 or YRL226)

* Optional Accessory

Temperature Range

Outside Temperature Range
-30°C to 60°C = -22°F to 140°F

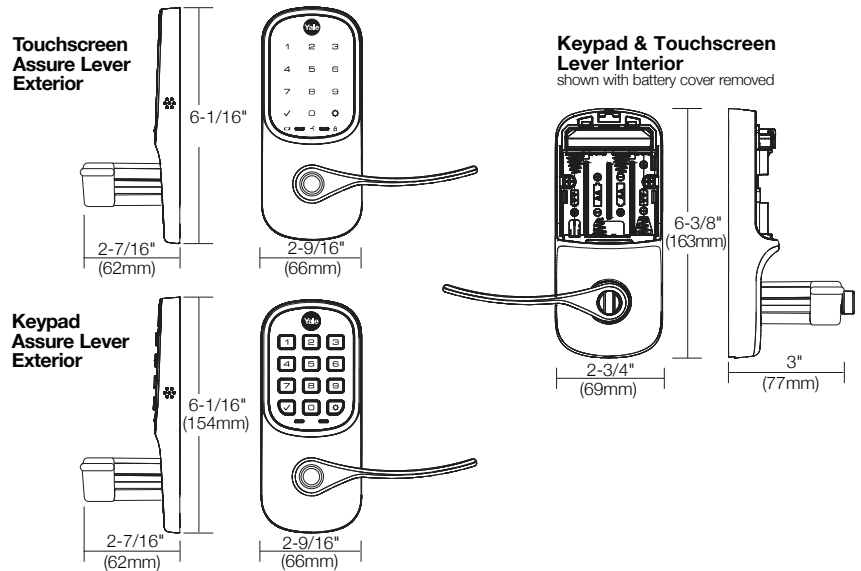
Inside Temperature Range
-15°C to 70°C = 5°F to 158°F

Battery Temperature Range
-10°C to 55°C = 14°F to 131°F

Storage Temperature Range
-40°C to 85°C = -40°F to 185°F

Warranty

for the original owner, one year warranty for electronics and lifetime limited warranty for finish and mechanical operation.



Technical Support

Visit: YaleHome.com/Support
Call: 1-855-213-5841 | 24/7
Email: Support@yalelock.com

Customer Service

Call: 1-800-438-1951 | M-F 8am-4:30pm EST
Email: Service@yalelock.com

Yale Locks & Hardware

225 Episcopal Road
Berlin, CT 06037 USA
YaleHome.com



Download the free BILT app for 3D, interactive installation tutorials.



Yale®, Yale Real Living®, Assure Lock®, and Lose Your Keys. For Good.® are registered trademarks of Yale Security Inc., an ASSA ABLOY Group Company. Other products' brand names may be trademarks or registered trademarks of their respective owners and are mentioned for reference purposes only. © Copyright 2018. Yale Security Inc., an ASSA ABLOY Group Company. All rights reserved. Reproduction in whole or in part without the express written permission of Yale Security Inc. is prohibited.

Apple®, iPhone®, iPad®, iPod touch® and Siri® are trademarks of Apple Inc., registered in the U.S. and other countries. HomeKit is a trademark of Apple Inc. Use of the Works with Apple HomeKit logo means that an electronic accessory has been designed to connect specifically to iPod touch, iPhone or iPad, respectively, and has been certified by the developer to meet Apple performance standards. Apple is not responsible for the operation of this device or its compliance with safety and regulatory standards.