



YE SERIES ALPHARETTA



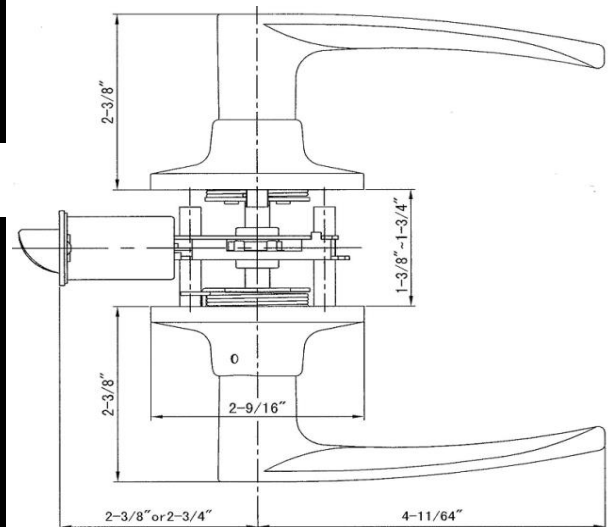
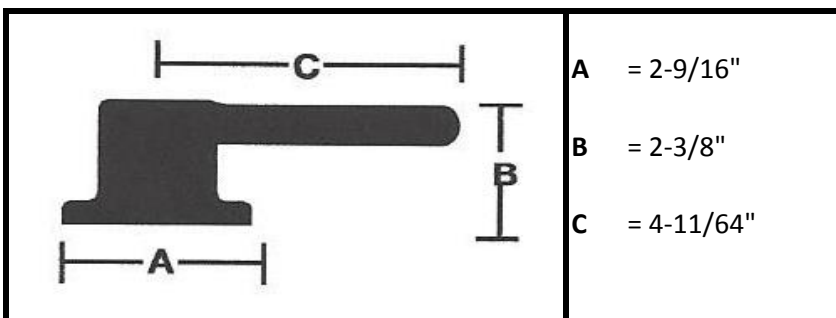
Standard Specifications:

Door Prep	Cross bore: 2-1/8" Edge Bore: 1" Latch face: 1" x 2-1/4" RC
Door Thickness	1-3/8" to 1-3/4" doors
Latch	
Std product	Tubular 2-3/8" and 2-3/4" RC adjustable Tubular Drive-in latch available
ADA product	Cylindrical 2-3/8" and 2-3/4" RC adjustable
Strike	1-3/4" x 2-1/4" Radius Corner Full lip strike
Door Handing	Reversible Levers
Cylinder	5 Pin KW-1 Compatible
Keying	KA5 std; other options available

Features

- Meets or exceeds Grade 3 standards
- Std latch/strike screw is combination wood/metal screw
- Dust Box included

Dimensions:



Model	Function	CTN QTY	ItemNumber		
			Oil Rubbed Bronze	Satin Nickel	Bright Brass
AL81	Dummy	20	ALD10BP	ALD15	ALD3
AL73	Entry ADA	20	Not Available	ALE155A	Not Available
AL71	Entry	20	ALE10BP6	ALE156	ALE36
AL23	Privacy ADA	20	Not Available	ALPR15A	Not Available
AL21	Privacy	20	ALPR10BP	ALPR15	ALPR3
AL11	Passage	20	ALPA10BP	ALPA15	ALPA3