



# YALE EDGE Edisto



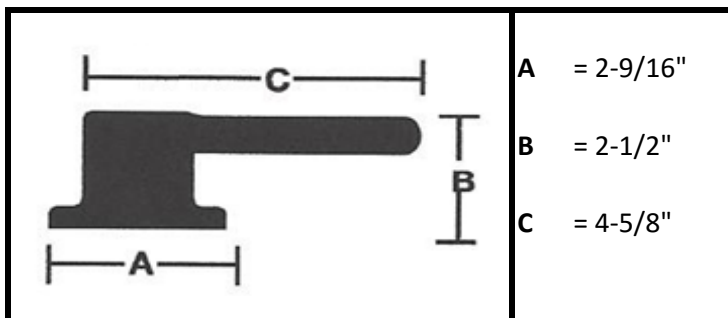
### Standard Specifications:

<b>Door Prep</b>	Cross bore: 2-1/8" Edge Bore: 1" Latch face: 1" x 2-1/4" RC
<b>Door Thickness</b>	1-3/8" to 1-3/4" doors
<b>Latch Std product</b>	Tubular 2-3/8" or 2-3/4" RC adjustable Tubular Drive-in latch available
<b>Strike</b>	1-3/4" x 2-1/4" Radius Corner Full lip strike
<b>Door Handing</b>	Reversible Levers
<b>Cylinder</b>	5 Pin KW-1 Compatible Optional SC-1 available
<b>Keying</b>	KA5 std; other options available

### Features

- Meets or exceeds Grade 3 standards
  - Std latch/strike screw is combination wood/metal screw
- Dust Box Included

### Dimensions:



Model	Function	CTN QTY	ItemNumber	
			US26D/626	Available finishes:
ED81	Dummy	20	EDD26D	10BP(10BP) 619 (15) 626 (26D)
ED71	Entry	20	EDE26D5	
ED21	Privacy	20	EDPR26D	
ED23	Privacy ADA	20	EDPR26DA	
ED11	Passage	20	EDPA26D	