



YE SERIES KEOWEE

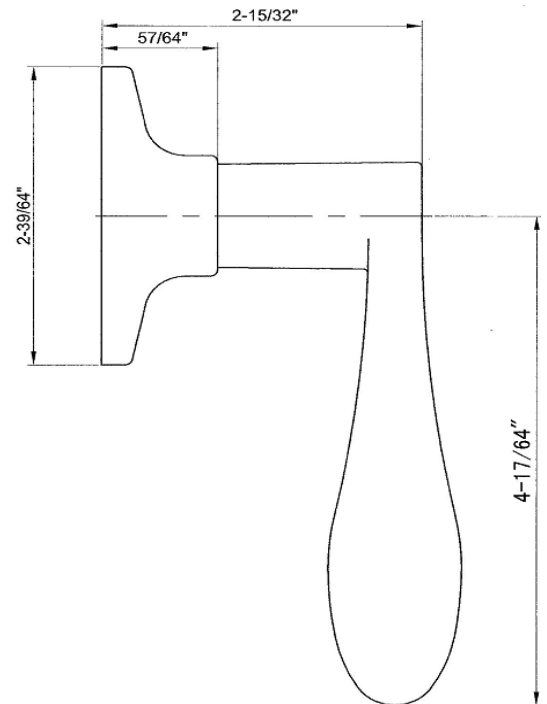


Standard Specifications:

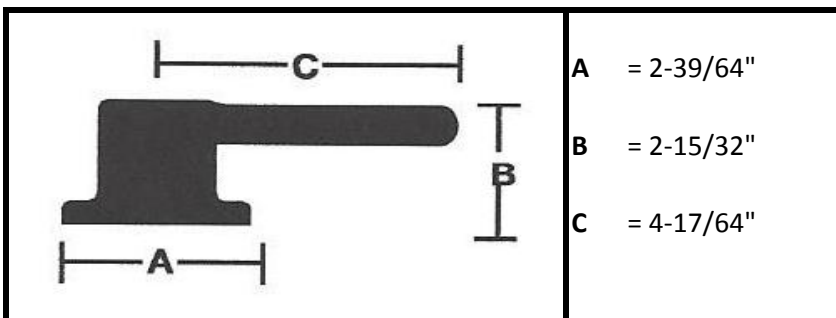
Door Prep	Cross bore: 2-1/8" Edge Bore: 1" Latch face: 1" x 2-1/4" RC
Door Thickness	1-3/8" to 1-3/4" doors
Latch	
Std product	Tubular 2-3/8" and 2-3/4" RC adjustable Tubular Drive-in latch available
ADA product	Cylindrical 2-3/8" and 2-3/4" RC adjustable
Strike	1-3/4" x 2-1/4" Radius Corner Full lip strike
Door Handing	Reversible Levers
Cylinder	5 Pin KW-1 Compatible
Keying	KA5 std; other options available

Features

- Meets or exceeds Grade 3 standards
- Std latch/strike screw is combination wood/metal screw
- Dust Box included



Dimensions:



Model	Function	CTN QTY	ItemNumber		
			Oil Rubbed Bronze	Satin Nickel	Bright Brass
KW81	Dummy	20	KWD10BP	KWD15	Not Available
KW73	Entry ADA	20	KWE10BP5A	KWE155A	Not Available
KW71	Entry	20	KWE10BP6	KWE156	Not Available
KW23	Privacy ADA	20	KWPR10BPA	KWPR15A	Not Available
KW21	Privacy	20	KWPR10BP	KWPR15	Not Available
KW11	Passage	20	KWPA10BP	KWPA15	Not Available