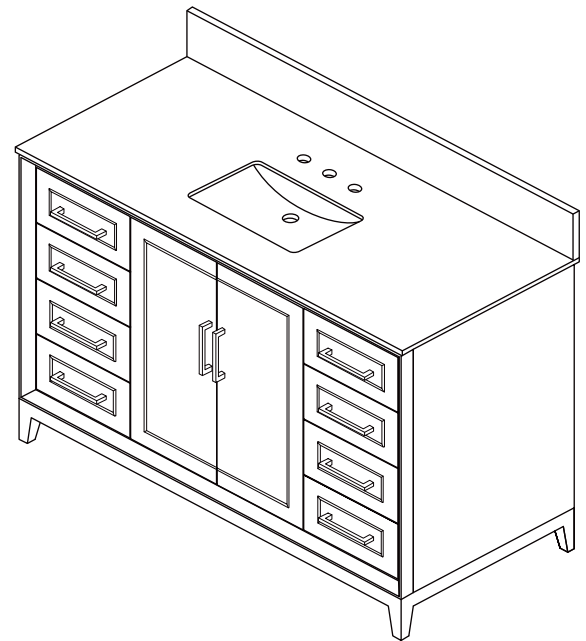
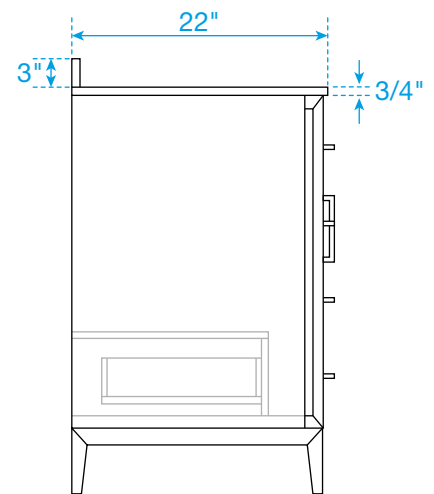


WC-5151-60-SGL-VCA3



Technical drawing of the front view of the cabinet. The overall dimensions are 59-3/4" wide and 34-1/2" high. The width is divided into four sections: 14-3/4", 13-3/4", 13-3/4", and 14-3/4". The height is divided into two main sections: 13-1/4" for the lower section and 21-1/4" for the upper section. The upper section has a height of 21-1/4" and a depth of 1-1/4". The lower section has a height of 13-1/4" and a depth of 5-3/4". The upper section contains four drawers, each with a height of 6-1/2" and a width of 13-3/4". The lower section contains two large doors, each with a height of 26-1/4" and a width of 13-3/4". The doors have a handle height of 5-3/4" and a handle width of 1-3/4". The drawers have a handle height of 1-3/4" and a handle width of 1-3/4".



\*Note: Due to high probability of breakage, the backsplash comes in two pieces, cut from the same piece. All measurements are  $\pm 1/4"$ .

WC-VCA3-60-SGL-TOP

