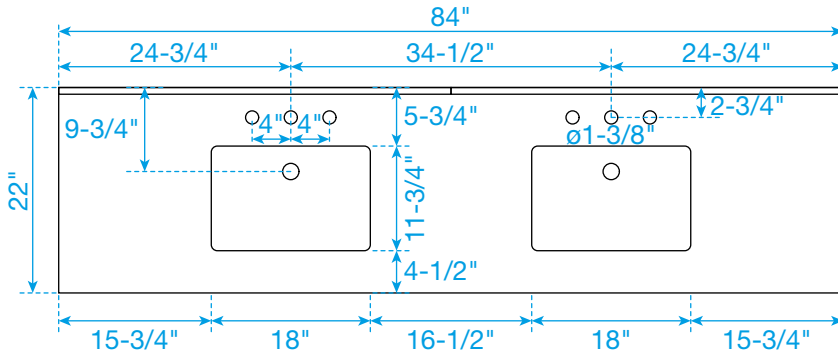
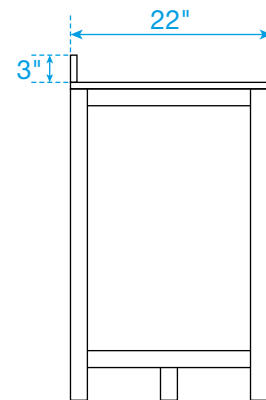
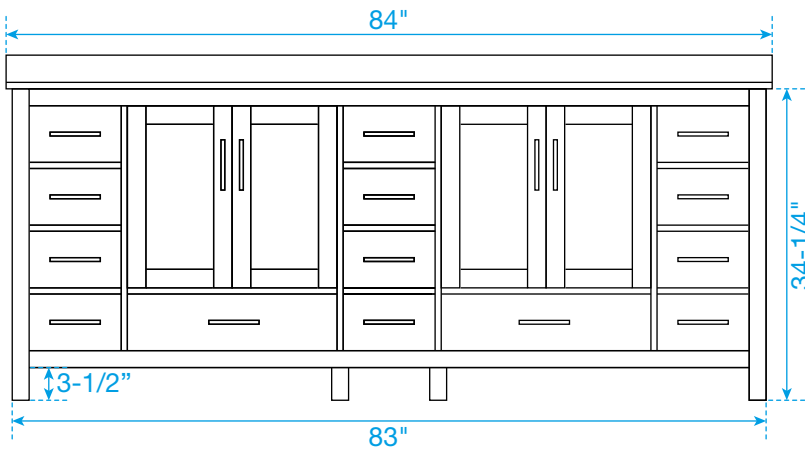
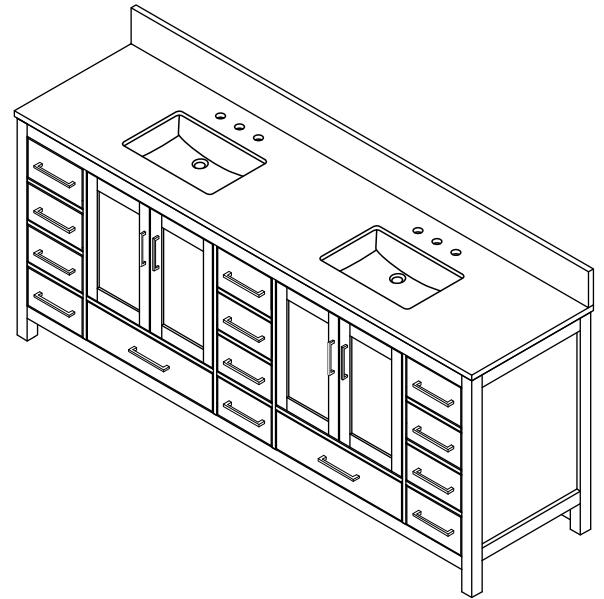
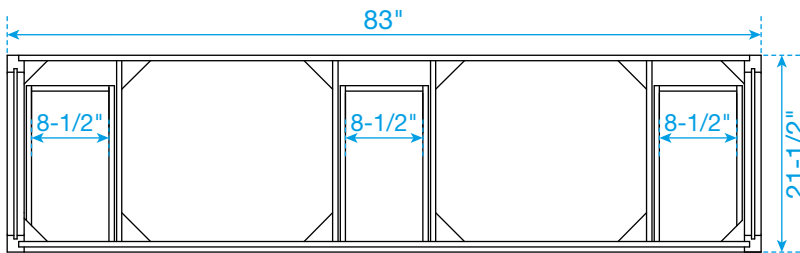


# WYNDHAM COLLECTION



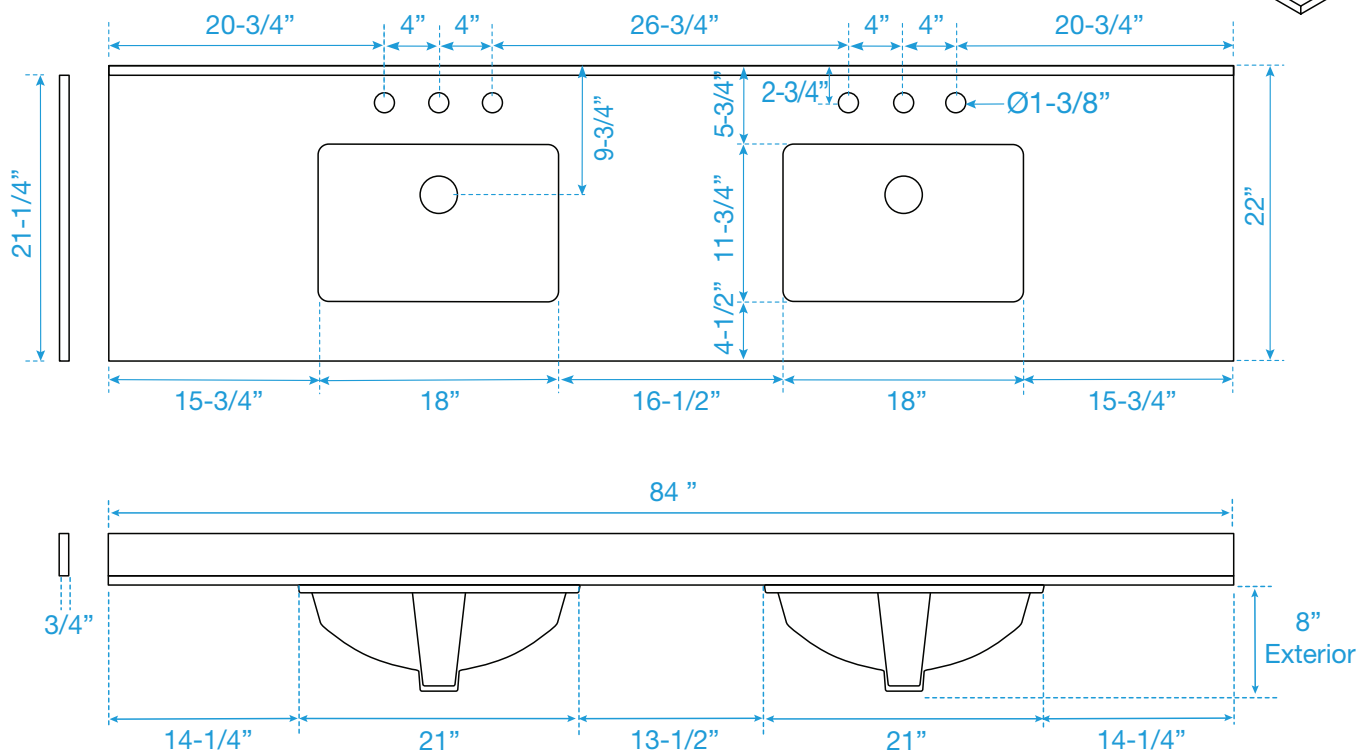
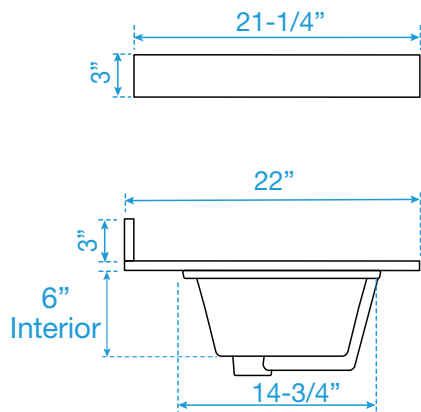
TOP VIEW OF VANITY CABINET



\*Note: Due to high probability of breakage, the backsplash comes in two pieces, cut from the same piece. All measurements are  $\pm 1/4"$ .

WC-1414-84-DBL  
Quartz

## A technical line drawing of a rectangular sink unit, viewed from an isometric perspective. The unit consists of a long, narrow rectangular basin with a raised rim. Inside the basin, there are two smaller, rectangular sinks. Each of these smaller sinks has a circular drain hole in its center. Between the two smaller sinks, there is a central control panel. This panel features three small, circular buttons or indicators arranged in a horizontal row. The drawing is composed of clean, black lines on a white background, highlighting the geometric form and functional components of the unit.



WC-QC3-84-DBL-TOP