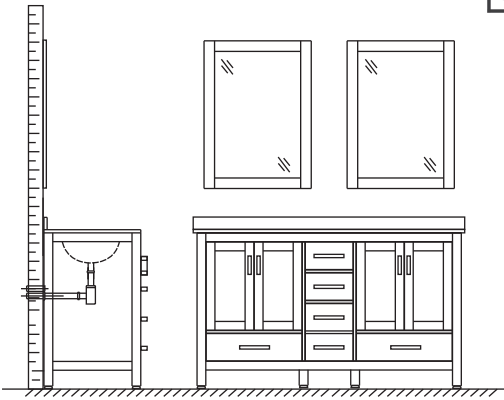
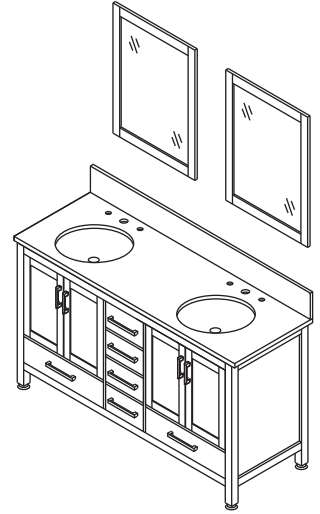


# WYNDHAM COLLECTION

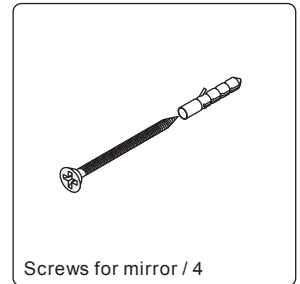
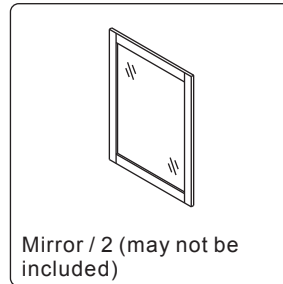
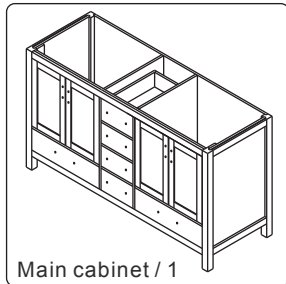
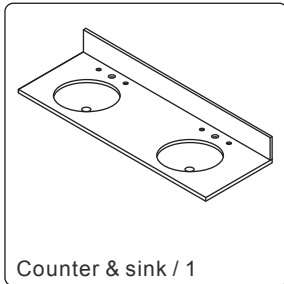


- Prior to installation please check received items against the "Packing List". Please report any missing items to your retailer immediately.
- Protect all surfaces from sharp objects, high heat sources, direct prolonged sunlight and chemical hazards.
- Professional installation recommended.
- Backsplash comes in two pieces.

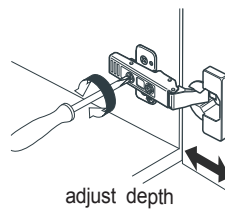
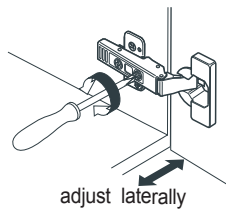
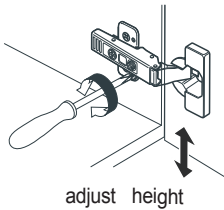


## PACKING LIST

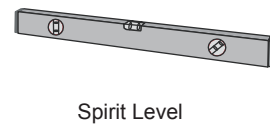
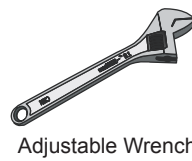
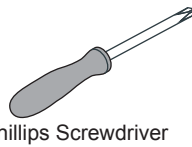
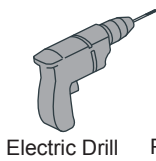
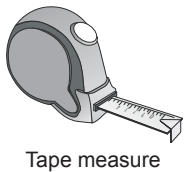
(Not all components may be included, depending upon your purchase)



## HOW TO ADJUST HINGES (if required)



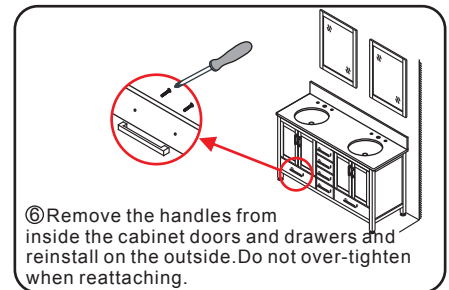
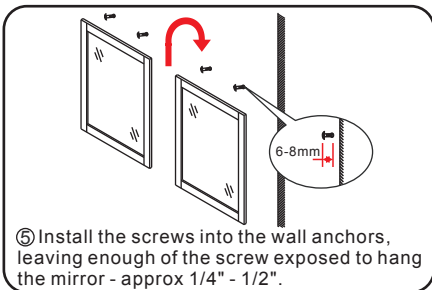
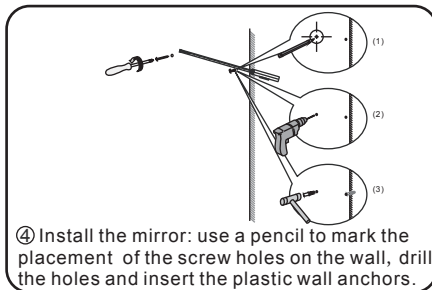
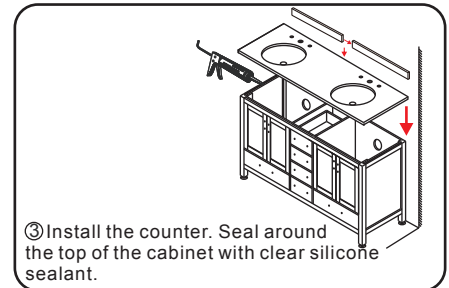
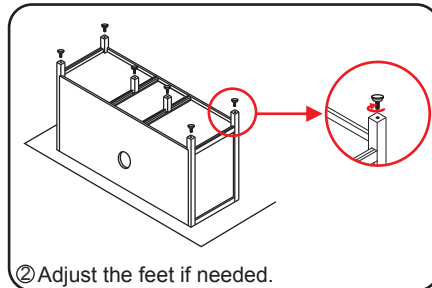
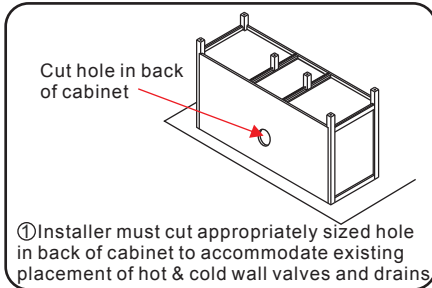
## REQUIRED TOOLS NOT IN BOX



# WC-1414-72 Installation Guide

# WYNDHAM COLLECTION

## INSTALLATION INSTRUCTIONS



## WC-1414-72 Installation Guide