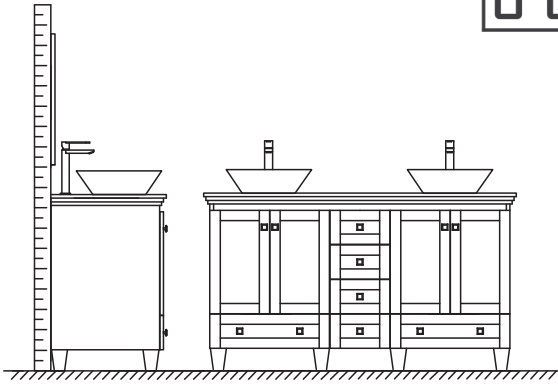
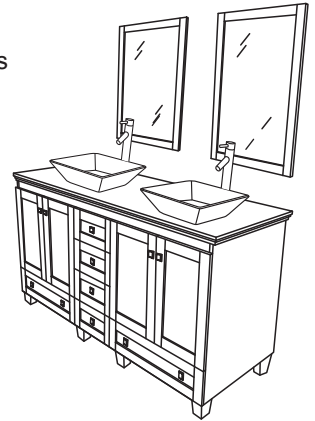


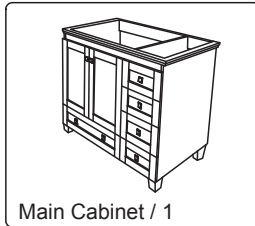
# WYNDHAM COLLECTION



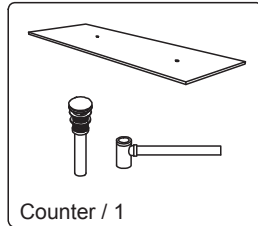
- Prior to installation, please check received items against the "Packing List".
- Please report any missing items to your retailer immediately
- Protect all surfaces from sharp objects, high heat sources, direct prolonged sunlight and chemical hazards.
- Professional installation recommended.



## PACKING LIST

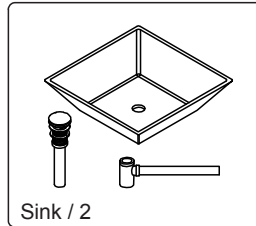


Main Cabinet / 1



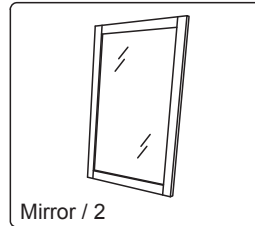
Counter / 1

OPTIONAL



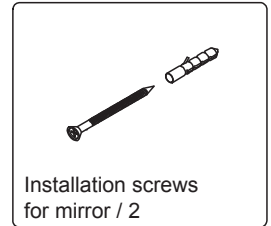
Sink / 2

OPTIONAL



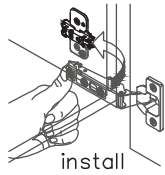
Mirror / 2

OPTIONAL

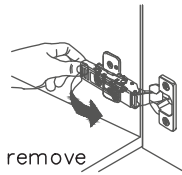


Installation screws  
for mirror / 2

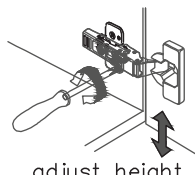
## INSTALLATION AND ADJUSTMENT OF HINGES



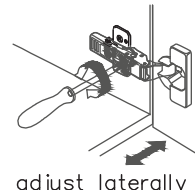
install



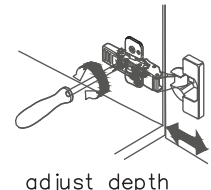
remove



adjust height

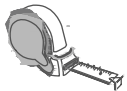


adjust laterally



adjust depth

## REQUIRED TOOLS NOT IN BOX



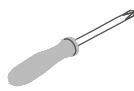
Tape measure



Pencil



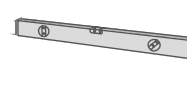
Electric Drill



Phillips Screwdriver



Adjustable Wrench



Spirit Level

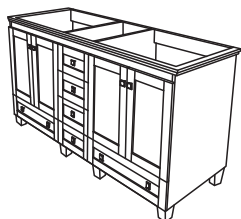


Silicone sealant

WC-CG8000-60  
OVERMOUNT INSTALLATION

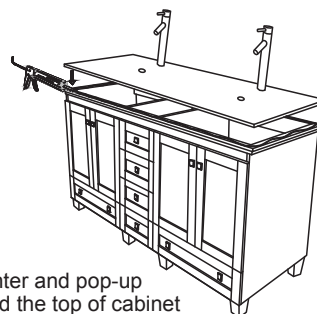
# WYNDHAM COLLECTION

## INSTALLATION INSTRUCTIONS

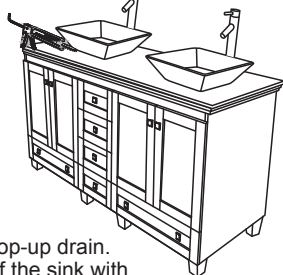


Cut hole in  
back of cabinet

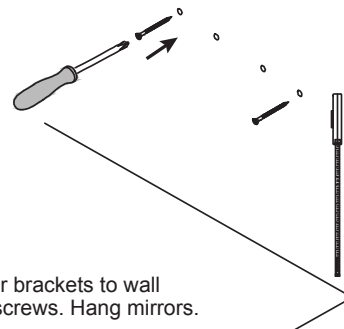
① Installer must cut appropriately sized hole in back of cabinet to accommodate existing placement of hot&cold wall valves and drains



② Install the counter and pop-up drain. Seal around the top of cabinet with clear or white silicone sealant.



③ Install the sink and pop-up drain. Seal around the base of the sink with clear or white silicone sealant.



④ Attach mirror brackets to wall with supplied screws. Hang mirrors.

WC-CG8000-60  
OVERMOUNT INSTALLATION