

Product Specs Sheets

Cover Page

Plain 45W

Features



- Bathroom Sink
- Made of Ceramic
- Available in 2 Finishes: Glossy White and Matte Black
- With Overflow
- Wall Mount or Countertop (Vessel) Installation
- Available with One, Three (4" or 8" Spread) or No Faucet Hole
- Available with Soap Dispenser Hole Option to the Left or Right of Faucet Hole
- Made in Italy



Related Items:

- WSBC 53991 | Push Waste Drain
- WSBC 53922 | Decorative Trap

Finishes:

-  Ceramic White
-  Matte Black


SKU# | Options:

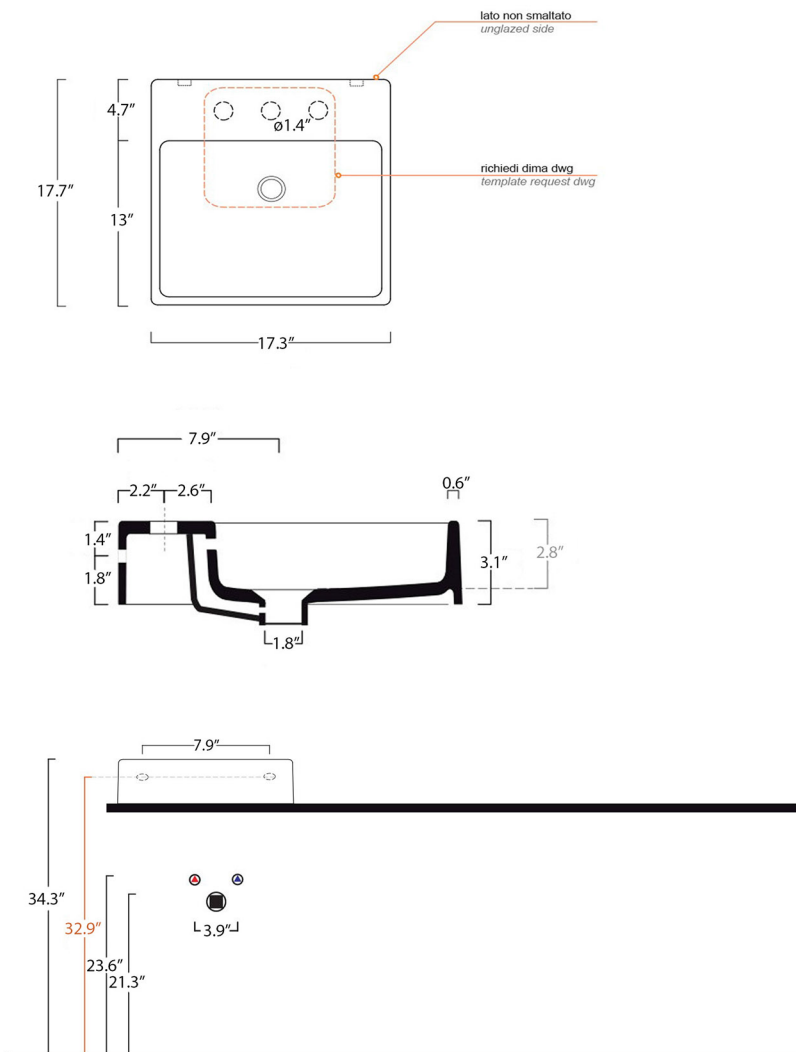
- Plain 45W.00 WG | No Faucet Hole, Glossy White
- Plain 45W.01 WG | Single Faucet Hole, Glossy White
- Plain 45W.03-4 WG | Three Faucet Hole 4" Spread, Glossy White
- Plain 45W.03-8 WG | Three Faucet Hole 8" Spread, Glossy White
- Plain 45W.02L WG | Soap Dispenser Hole (Left), Glossy White
- Plain 45W.02R WG | Soap Dispenser Hole (Right), Glossy White
- Plain 45W.00 BM | No Faucet Hole, Matte Black
- Plain 45W.01 BM | Single Faucet Hole, Matte Black
- Plain 45W.03-4 BM | Three Faucet Hole 4" Spread, Matte Black
- Plain 45W.03-8 BM | Three Faucet Hole 8" Spread, Matte Black
- Plain 45W.02L BM | Soap Dispenser Hole (Left), Matte Black
- Plain 45W.02R BM | Soap Dispenser Hole (Right), Matte Black

Codes & Standards:

- ADA Compliant

* WS Bath Collections reserves the right to revise dimensions or information on this sheet without notice

Collection Plain	Model Plain 45W	Dimensions Metric <i>1 inch = 2.54 cm</i> <i>1 inch = 25.4 mm</i>	 1051 Lea Drive - Collegeville, PA 19426 Tel. 215 513 9400 - Fax 610 831 0215 www.ws bathcollections.com - info@ws bathcollectins.com
------------------------------	-----------------------------	--	---



Collection
Plain

Model |
Plain 45W

Dimensions Metric
1 inch = 2.54 cm
1 inch = 25.4 mm

WS[®]
BATH
COLLECTIONS

1051 Lea Drive - Collegeville, PA 19426
Tel. 215 513 9400 - Fax 610 831 0215
www.ws bathcollections.com - info@ws bathcollections.com

We recommend the following items that work with your sink.

Plain 45W

TRAPS



WSBC 53922
Our best seller

Polished Chrome
WSBC 53922.29

Matte Black
WSBC 53922.22



WSBC 5392

Polished Chrome
WSBC 5392.29



WSBC 53925

Polished Chrome
WSBC 53925.29



WSBC 53921
Space saving

Polished Chrome
WSBC 53921.29

Matte Black
WSBC 53921.22

DRAINS



WSBC 53991
Push waste drain (click clack)
with overflow

Polished Chrome
WSBC 53991.29

Glossy White
WSBC 53991.09

Matte Black
WSBC 53991.22

MOUNTING HARDWARE

Wall-mount installation

Vessel/ countertop installation



Bolts



Silicone (optional)

Collection
Rnc kp

Model |
Rnc kp "67 Y

Dimensions Metric
1 inch = 2.54 cm
1 inch = 25.4 mm

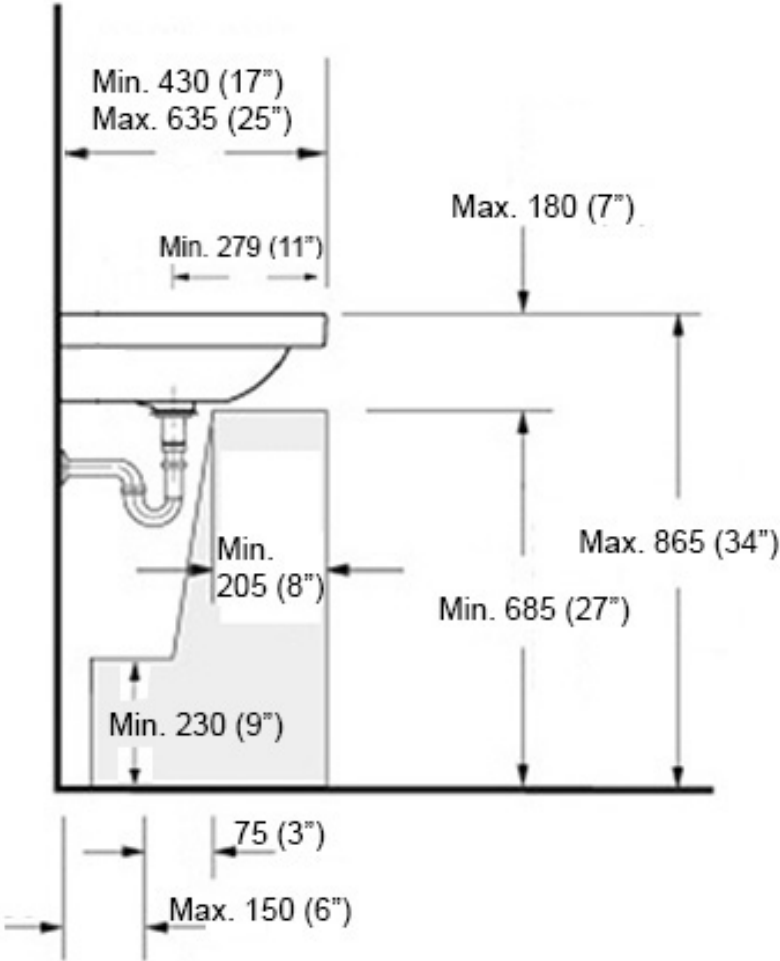
WS[®]

BATH
COLLECTIONS

1051 Lea Drive - Collegeville, PA 19426
Tel. 215 513 9400 - Fax 610 831 0215

www.ws bathcollections.com - info@ws bathcollections.com

Recommended ADA Installation



Note: ADA Compliant when installed in accordance with ADA guidelines

<p>Collection Plain</p>	<p>Model Plain 45W</p>	<p>Dimensions Metric 1 inch = 2.54 cm 1 inch = 25.4 mm</p>	<p>WS[®] BATH COLLECTIONS 1051 Lea Drive - Collegeville, PA 19426 Tel. 215 513 9400 - Fax 610 831 0215 www.ws bathcollections.com - info@ws bathcollectins.com</p>
------------------------------------	-------------------------------------	--	--