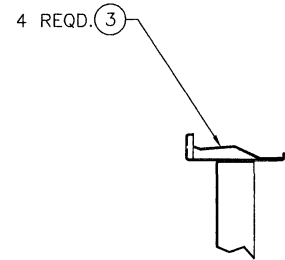
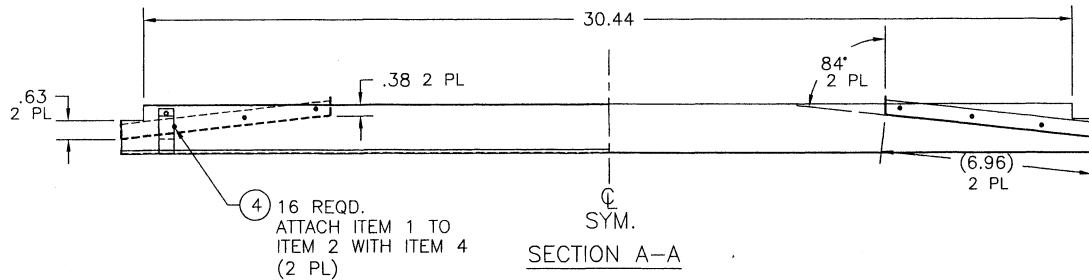
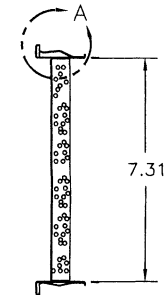
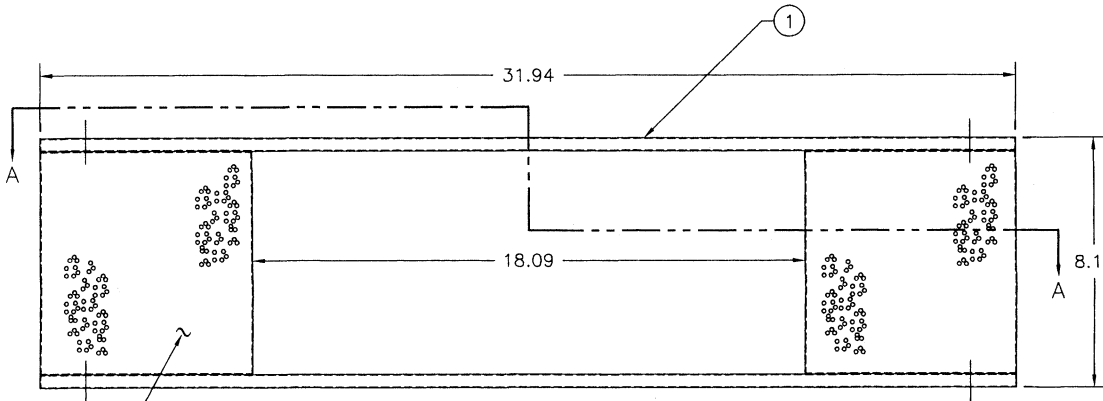


NOTICE
 This drawing embodies a CONFIDENTIAL proprietary design originated by WILLIAMS FURNACE CO., and all design, manufacturing, reproduction, use and sale rights regarding the same are expressly reserved. It is submitted under a confidential relationship for a specific purpose, and the recipient agrees by accepting this drawing not to supply or disclose any information regarding it to any unauthorized person, or to incorporate in other projects any special features unique to this design. All patent rights hereto are expressly reserved.



DETAIL A
 SCALE: NONE



| | | | |
|---|------------|----|-------------------|
| 4 | P130900 | 16 | RIVET - .125 DIA. |
| 3 | K1171-6002 | 4 | CLIP, HEARTH |
| 2 | K000461 | 2 | REFLECTOR |
| 1 | K000219 | 2 | HEARTH |

| ITEM | PART NO. | NO. REQD | DESCRIPTION |
|------|----------|----------|-------------|
|------|----------|----------|-------------|

DWN: J.A. APP: DATE: 9/10/96

WILLIAMS FURNACE CO.
 225 ACACIA ST.
 COLTON, CALIFORNIA 92324 • USA

TOLERANCES UNLESS OTHERWISE SPECIFIED: .XX = ± .030
 .XXX = ± .015
 ANGLES = ± 3'
 SCALE: 1:4 DO NOT SCALE DWG.
 NEXT ASSY:

| | | | | | |
|-------|--|----------|------|----------|-----|
| TITLE | HEARTH ASSEMBLY (650 CONSOLE WITH LOGS) | PART NO. | SIZE | DWG. NO. | REV |
| | | | B | K000464 | A |

| LTR. | REVISION | DWN. | APP. | DATE |
|------|---|------|-----------|---------|
| A | REVISED ITEM 2; REFLECTOR WAS REFLECTOR, CHROME | T.D. | E.M. 2239 | 5-19-98 |
| ~ | RELEASE TO PRODUCTION | J.A. | ECO 2118 | 9/10/96 |