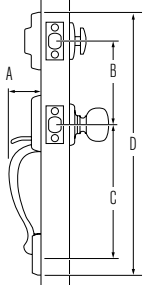
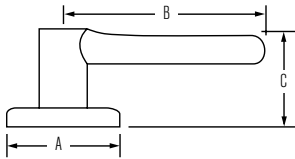


## HANDLESETS



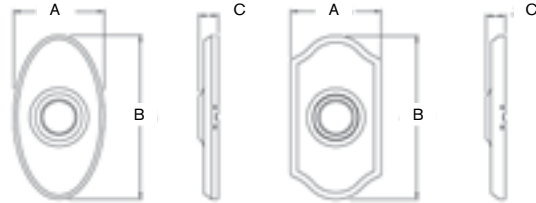
Design	A	B	C	D
Amherst®	3"	5-1/2"	8-13/32"	18-23/32"
Ashfield™	2-21/32"	5-1/2"	8-13/32"	17-3/4"
Avalon™	2-21/32"	5-1/2"	8-13/32"	18-5/32"
Hawthorne™	2-7/8"	5-1/2"	8-13/32"	17-9/16"
Shelburne™	2-7/8"	5-1/2"	8-13/32"	18-1/4"

## LEVERS



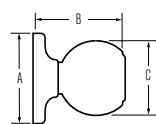
Design	A	B	C	C (Keyed)
Ashfield™	2-5/8"	4-3/16"	2-9/16"	2-7/8"
Avalon™	2-5/8"	4-1/4"	2-1/2"	2-7/8"
Brooklane®	2-5/8"	4-3/16"	2-3/16"	2-7/8"
Commonwealth®	2-5/8"	3-5/8"	1-15/16"	2-11/16"

## DESIGNER ROSE



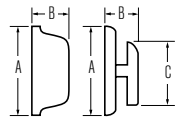
Design	A	B	C
Oval	2-23/32"	4-7/8"	9/16"
Arched	2-23/32"	4-7/8"	9/16"

## KNOBS



Design	A	B	C
Hancock™	2-5/8"	2-3/4"	2-3/8"

## DEADBOLT



Design	A	B	C
9471 Interior	2-9/16"	1-5/32"	1-13/16"
9471 Exterior	2-5/8"	1-1/16"	
9371 Interior	2-5/8"	1-1/16"	
9371 Exterior	2-5/8"	1-1/16"	

## HANDLESETS

<b>Door Prep</b>	Deadbolt: Cross Bore 2-1/8" or 1-1/2" Edge Bore 1" Latch Face 1" x 2-1/4".
	Handle: Cross Bore 2-1/8". Edge Bore 1" Latch Face 1" x 2-1/4"
<b>Backset</b>	Deadbolt: Adjustable to 2-3/8" or 2-3/4" Handle: Adjustable to 2-3/8" or 2-3/4"
<b>Door</b>	1-3/4" doors standard. 2-1/4" doors optional.
<b>Thickness</b>	Not designed for use on 1-3/8" doors.
<b>Cylinder</b>	SmartKey or KW 5pin
<b>Faceplate</b>	1" x 2-1/4". Specify round corner or square corner or drive-in.

<b>Strikes</b>	Deadbolt: 1-1/8" x 2-3/4" Specify round corner or square corner Handle: 2-1/4" full lip Specify round corner or square corner Other options available
----------------	---

<b>Bolt</b>	Deadbolt: 1" steel Handle: 1/2" throw. Nickel plated.
-------------	--

**Door Handing** Reversible for right or left-hand doors.

**ANSI/BHMA** A156.5 Grade 1 (for deadbolt).

**ADA** N/A

**UL** N/A

## LEVERS

<b>Door Prep</b>	Cross Bore 2-1/8" Edge Bore 1" Latch Face 1" x 2-1/4"
<b>Backset</b>	Adjustable to 2-3/8" or 2-3/4" UL 2-3/4" standard 2-3/8" optional
<b>Door</b>	1-3/8" - 1-3/4" doors standard.
<b>Thickness</b>	2-1/4" doors optional on GCL 331 and GCL 535
<b>Cylinder</b>	SmartKey or KW 5pin
<b>Faceplate</b>	1" x 2-1/4" Specify round corner, square corner or drive-in.

<b>Strikes</b>	2-1/4" full lip. Specify round corner or square corner. Other options available.
----------------	--

<b>Bolt</b>	1/2" throw nickel plated.
-------------	---------------------------

**Door Handing** Specify handing only with Inactive levers

**ANSI/BHMA** A156.2 Grade 2.

**ADA** Functions GCL 101, GCL 12 satisfies section 4.13.9 ADA requirement.

**UL** Meets 3 hour fire rating for all UL functions when fronted latches used.  
Meets 20 minute with drive-in latch.

## KNOBS

<b>Door Prep</b>	Cross Bore: 2-1/8" Edge Bore: 1" Latch Face: 1" x 2-1/4".
<b>Backset</b>	Adjustable to 2-3/8" or 2-3/4" UL 2-3/4" standard 2-3/8" optional
<b>Door</b>	1-3/8" - 1-3/4" doors standard. 2-1/4" doors optional.
<b>Thickness</b>	2-1/4" doors optional on GCA 101 and GCA 531 models only.
<b>Cylinder</b>	SmartKey or KW 5pin.
<b>Faceplate</b>	1" x 2-1/4". Specify round corner, square corner or drive-in.

<b>Strikes</b>	2-1/4" full lip. Specify round corner or square corner. Other options available.
----------------	--

<b>Bolt</b>	1/2" throw nickel plated
-------------	--------------------------

**Door Handing** Reversible for right- or left-hand doors.

**ANSI/BHMA** A156.2 Grade 2.

**ADA** N/A

**UL** Meets 3 hour fire rating for all UL functions when fronted latches used.  
Meets 20 minute with drive-in latch.

## DEADBOLTS

<b>Door Prep</b>	Crossbore 2-1/8" or 1-1/2" Edge Bore 1" Latch Face 1" x 2-1/4"
<b>Backset</b>	Adjustable to 2-3/8" or 2-3/4"
<b>Door</b>	SMT 1-3/8" - 1-3/4" KW P&T 1-3/4"
<b>Thickness</b>	
<b>Cylinder</b>	SmartKey or KW 5pin
<b>Faceplate</b>	1" x 2-1/4". Specify round corner, square corner or drive-in.

<b>Strikes</b>	Standard: Grade 1, 1-1/8" x 2-3/4" Specify round corner or square corner. Other options available.
----------------	--

<b>Bolt</b>	1" throw Steel.
-------------	-----------------

**Door Handing** Reversible for right or left-hand doors.

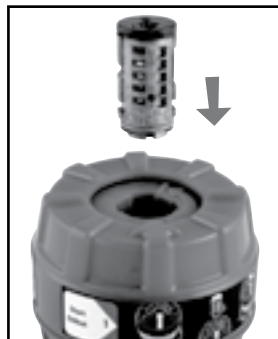
**ANSI/BHMA** A156.5 Grade 1.

**ADA** Interior turn piece meets 4.13.9 ADA requirements.

**UL** Meets 3 hour fire rating for all UL functions when fronted latches used.  
Meets 20 minute with drive-in latch.



**A** Before you begin, rotate lower dial to the right till it stops to align arrow on upper grip with start point **1** on inner dial.



**B** Insert cylinder all the way into the inner dial.



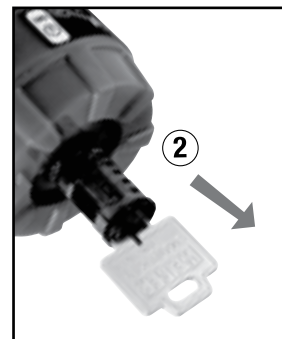
**C** Rotate lower dial half turn to the left till it stops, where the two arrows meet.



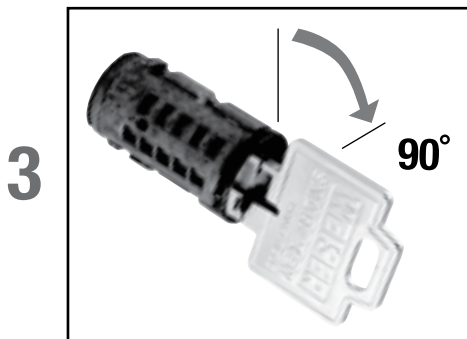
**A** Insert the SmartKey tool into the small hole (next to the keyway) on the cylinder face, and push with force till it goes all the way in, then remove the SmartKey tool.



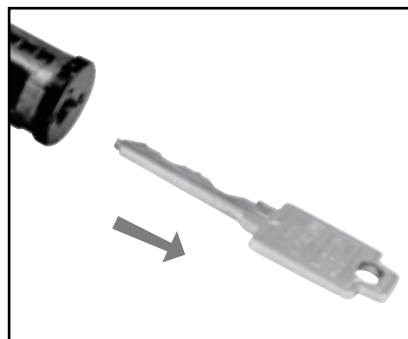
**B** Insert the key you want to learn in the plug, while being sure not to rotate the plug



**C** Remove the plug from the reset cradle by gently pulling on the key.



**A** While holding the cylinder body stationary, rotate the key back to the home position.



**B** Remove the key.



**C** Reinstall cylinder in product