

Model: WL-LED200

LEDme® Step Light

WAC LIGHTING

Responsible Lighting®

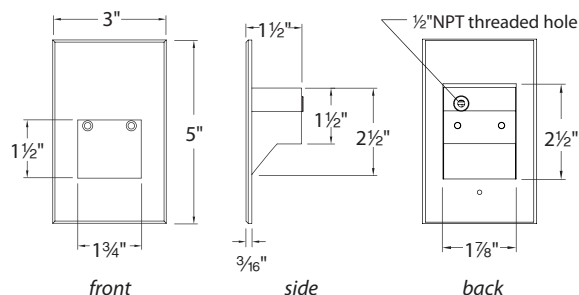


Fixture Type:

Catalog Number:

Project: _____

Location: _____



PRODUCT DESCRIPTION

Vertical rectangle LEDme® Step Light. Designed for safety and style on stairways, patios, decks, balcony areas, walkways and building perimeters.

Features an architectural design. Energy efficient for long-lasting indoor and outdoor lighting solutions. Creates an attractive, romantic impression at night.

FEATURES

- 316 marine grade cast stainless steel (SS) available
- Direct wiring, no driver needed
- Low profile, flush to wall aesthetics with no visible hardware
- 40,000 hour rated life
- Balanced lighting, free of shadows with minimum glare
- Up to 200 fixtures can be connected in parallel
- Replaceable LED module
- 5 year WAC Lighting product warranty

SPECIFICATIONS

Construction: Die-cast aluminum or 316 marine grade cast stainless steel

Power: Direct wiring, no remote driver needed. Input voltage: 120V or 277V AC 50/60Hz

Light Source: 3000K CCT Samsung HV-AC High Power LED, CRI: 85
Optional color lenses. Total power consumption of 3.9W

Mounting: Fits into 2" x 4" J-Box with minimum inside dimensions of 3"L x 2"W x 2"H Includes bracket for J-Box mount.

Dimming: Dim to 10% with electronic low voltage (ELV) dimmer
Approved dimmers: Lutron Nova-T NTELV-300 & NTELV-600, Lutron Vietri VTELV-600, Lutron Diva DVELV-300P, Lutron Skylark SELV-300P, Lutron Maestro MAELV-600

Standards: IP66, UL & cUL Listed for wet locations

ORDER NUMBER

Model #	Color	Finish
WL-LED200 120V	C White 3000K	SS Stainless Steel
WL-LED200F 277V	AM Amber 610nm	BK Black
	RD Red 640nm	WT White
	BL Blue 450nm	BN* Brushed Nickel
		BZ Bronze

*Brushed Nickel Finish is for interior use only

FINISHES



Example: WL-LED200F-AM-BZ

wacighting.com
Phone (800) 526.2588
Fax (800) 526.2585

Headquarters/Eastern Distribution Center
44 Harbor Park Drive
Port Washington, NY 11050

Central Distribution Center
1600 Distribution Ct
Lithia Springs, GA 30122

Western Distribution Center
1750 Archibald Avenue
Ontario, CA 91760

Model: WL-LED200

LEDme® Step Light

WAC LIGHTING

Responsible Lighting®

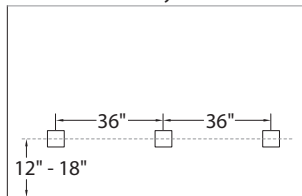
FIXTURE PERFORMANCE

Input Voltage	Light Color	Finish	Lumens
WL-LED200 120V	C White	SS Stainless Steel	36
		BK Black	27
		WT White	63
		BN Brushed Nickel	27
	AM Amber	BZ Bronze	29
		SS Stainless Steel	21
		BK Black	16
		WT White	31
	RD Red	BN Brushed Nickel	16
		BZ Bronze	17
		SS Stainless Steel	2
		BK Black	2
	BL Blue	WT White	4
		BN Brushed Nickel	2
		BZ Bronze	2
		SS Stainless Steel	4
	BK Black	3	
	WT White	7	
	BN Brushed Nickel	3	
	BZ Bronze	4	

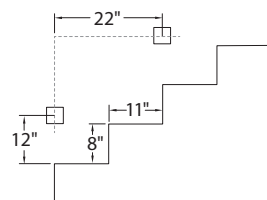
Input Voltage	Light Color	Finish	Lumens
WL-LED200F 277V	C White	SS Stainless Steel	33
		BK Black	23
		WT White	54
		BN Brushed Nickel	23
	AM Amber	BZ Bronze	26
		SS Stainless Steel	18
		BK Black	13
		WT White	27
	RD Red	BN Brushed Nickel	13
		BZ Bronze	14
		SS Stainless Steel	2
		BK Black	1.5
	BL Blue	WT White	3
		BN Brushed Nickel	1.5
		BZ Bronze	2
		SS Stainless Steel	4
	BK Black	3	
	WT White	4	
	BN Brushed Nickel	3	
	BZ Bronze	3	

SPACING RECOMMENDATIONS FOR OPTIMAL LIGHT DISTRIBUTION

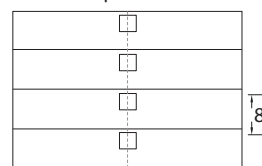
Corridors / Hallways



Stairs - Wall Mount



Stairs - Step Mount



Mount in center of stair as close to the upper tread as possible. For best results use one light per step for steps narrower than 5'.

waclighting.com
Phone (800) 526.2588
Fax (800) 526.2585

Headquarters/Eastern Distribution Center
44 Harbor Park Drive
Port Washington, NY 11050

Central Distribution Center
1600 Distribution Ct
Lithia Springs, GA 30122

Western Distribution Center
1750 Archibald Avenue
Ontario, CA 91760