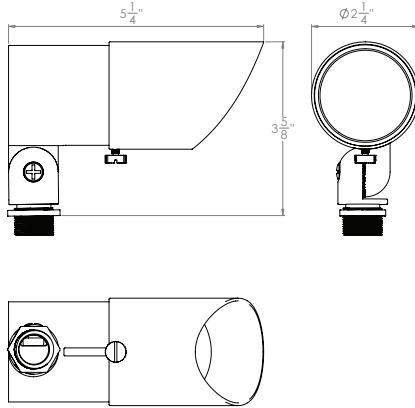


HORNET ACCENT 12V

5611

WAC

LANDSCAPE LIGHTING



Fixture Type:

Catalog Number:

Project: _____

Location: _____

PRODUCT DESCRIPTION

Landscape hornet accent luminaire. One fixture replaces all older halogen landscape accent lights

FEATURES

- Continuously Adjustable Beam Angles. Indexed at 20°, 35°, 45°, 60°, 70°
- IP66 rated, Protected against high-pressure water jets
- Corrosion resistant die-cast brass
- Factory sealed water tight fixtures
- Constant output for 9V-15V input
- Can be used as an uplight or downlight
- 2700K or 3000K color temperature
- Mounting stake, 12' lead wire and direct burial gel-filled wire nuts included
- MLV dimmable with remote MLV dimmers

SPECIFICATIONS

Input: 9-15VAC
Power: 10.5W / 16VA
Brightness: 820 lm
Beam Angle: 20° to 70°
CRI: 85
Rated Life: 40,000 hours

ORDERING NUMBER

| | | Color Temp | Finish |
|-------------|-----|----------------------------|----------------------------|
| 5611 | 12V | 27 2700K Warm White | BBR Bronze on Brass |
| | | 30 3000K Pure White | |

5611-30_____

Example: **5611-30BBR**

| | | | | |
|----------------------|---|-----------------------------------|-------------------------------------|-----------------------------|
| wacighting.com | Headquarters, East Manufacturing Facility | South East Manufacturing Facility | Central Manufacturing Facility | West Manufacturing Facility |
| Phone (800) 526.2588 | 44 Harbor Park Drive | 1600 Distribution Ct | 1700 South J Elmer Freeway, Ste 100 | 1750 S Archibald Ave |
| Fax (800) 526.2585 | Port Washington, NY 11050 | Lithia Springs, GA 30122 | Cedar Hill, TX 75104 | Ontario, CA 91761 |








HORNET ACCENT 12V

5611

WAC

LANDSCAPE LIGHTING

Accessories

| | | | | |
|----------------------------|---|---|--|---|
| Additional Stake |  | 9000-ST9-BZ | Bronze | Durable PVC stake |
| Surface Mount Flange/Stake |  | 5000-SCP-BBR | Bronze on Brass | Includes three 7 inch threaded stainless steel stabilizing pins for ground mounting or surface mounts with four screws or over a junction box |
| Guardian Mount |  | 9000-SP9-BZ | Stainless Steel | Heavy duty stainless steel spike to position fixture Formed from a single piece of metal |
| Gutter Mount Bracket |  | 5000-GM-BZ 5000-GM-Bk | Stainless Steel | Stainless Steel universal mounting bracket for gutter mounting fixture |
| Tree Mount Junction Box |  | 5000-TCP-BZ 5000-TCP-BK | Bronze on Aluminum Black on Aluminum | Bronze on Aluminum box with Stainless steel mounting screws. Two 1/2" NPT threaded holes |
| Extension Rods |  | 5000-X04-BBR 4 in 5000-X08-BBR 8 in 5000-X12-BBR 12 in | 5000-X18-BBR 18 in 5000-X24-BBR 24 in | Extends distance between Accent light and Surface Mount Canopy, Stake, or Tree Mount box |
| Rod L-Coupler |  | 5000-LCO-BZ | Bronze | |

Magnetic Transformers

Stainless Steel, 12-15V output, IP65 rated, UL 1838 listed
See transformer spec sheet for details and its accessories

9075-TRN-SS
75W Max

9150-TRN-SS
150W Max

9300-TRN-SS
300W Max

9600-TRN-SS
600W Max



wacighting.com
Phone (800) 526.2588
Fax (800) 526.2585

Headquarters, East Manufacturing Facility
44 Harbor Park Drive
Port Washington, NY 11050

South East Manufacturing Facility
1600 Distribution Ct
Lithia Springs, GA 30122

Central Manufacturing Facility
1700 South J Elmer Freeway, Ste 100
Cedar Hill, TX 75104

West Manufacturing Facility
1750 S Archibald Ave
Ontario, CA 91761