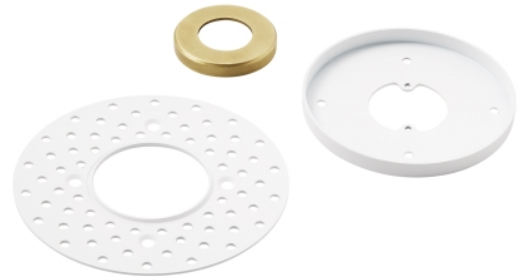


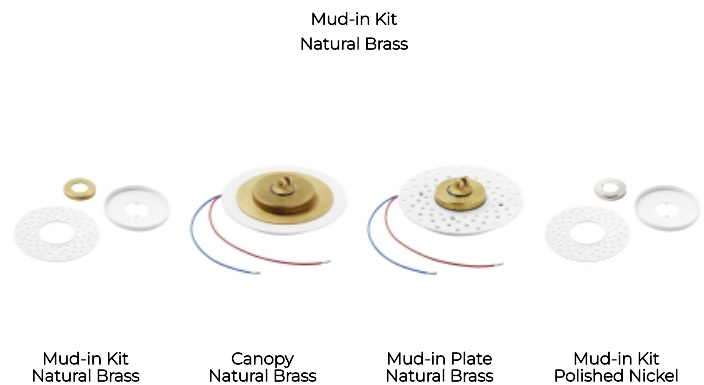
PRODUCT FEATURES

- From the brand formerly known as Tech Lighting
- The Mud In Plate provides the most seamless appearance at the ceiling in conjunction with the remote driver option.



LAMPING

Compatible with Collier remote option canopies only.



To view all available finish options, please visit techlighting.com

ORDERING INFORMATION

700CLRMDPLT FINISH

- BZ DARK BRONZE
- NB NATURAL BRASS
- N POLISHED NICKEL

700CLRMDPLT _____

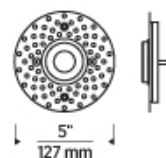
JOB NAME _____

NOTES _____



SPECIFICATIONS

PRIMARY MATERIAL	Aluminum or Brass
SHADE MATERIAL	
NET WEIGHT	0.25 lbs
HEIGHT	0.3in
WIDTH	5in
LENGTH	5in
WET LISTED	
DAMP LISTED	
DRY LISTED	
GENERAL LISTING	
INCLUDES	



LAMPING SPECIFICATIONS

	LED LAMP	INTEGRATED LED	NON LED	NO LAMP
DELIVERED LUMENS				
WATTS				
MAX WATTAGE PER BULB				
CCT				
CRI				
LED LIFETIME				
L70				
AVERAGE BULB HOURS				
FIELD SERVICEABLE LED				
LAMP BASE				
LAMP SHAPE				
LAMP INCLUDED?				
WARRANTY**			1 Year	

* Dimming information available at www.techlighting.com/Downloads#dimming

** Visit techlighting.com for specific warranty limitations and details.

T20 / T24 / JA8 INFORMATION

	Integrated LED	Replacement LED Lamp	No Lamp *
This product can be used to comply with California Building Energy Efficiency Standards 2016 Title 24 Part 6 / JA8.			N/A
This product can be used to comply with California Appliance Efficiency Standards 2016 Title 20 and may be shipped to and sold in California.			N/A

* If a light fixture or component does not include a lamp or light source, it is the responsibility of the customer to select a lamp that meets the T24 and T20 requirements.

