

The Turbo outdoor LED path light features a clean, cylindrical silhouette highlighted with decorative fins evenly spaced around the circumference which create beautiful geometric shadows when illuminated by the powerful LED light source shining down from the crown.

### High quality LM80-tested LEDs

for consistent long-life performance and color

### Outstanding protection against the elements:

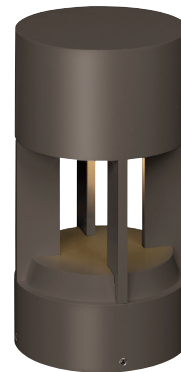
- Marine-grade powder coat finishes
- Stainless Steel mounting hardware
- Impact-resistant, UV stabilized frosted acrylic lensing

### Bolt or Stake mounting options

## SPECIFICATIONS

DELIVERED LUMENS	1053
WATTS	16.3
VOLTAGE	12V (Transformer sold separately)
DIMMING	MLV
LIGHT DISTRIBUTION	Symmetric
MOUNTING OPTIONS	Bolt or Stake
CCT	2700K, 3000K
CRI	80
COLOR BINNING	3 Step
BUG RATING	B1-U0-G0
DARK SKY	Compliant
WET LISTED	IP65
GENERAL LISTING	ETL
CALIFORNIA TITLE 24	Can be used to comply with CEC 2016 Title 24 Part 6 for outdoor use. Registration with CEC Appliance Database not required.
START TEMP	-30°C
FIELD SERVICEABLE LED	Yes
CONSTRUCTION	Aluminum
HARDWARE	Stainless Steel
FINISH	Marine Grade Powder Coat
LED LIFETIME	L70; 70,000 Hours
WARRANTY*	5 Years
WEIGHT	10.5 lbs.

\* Visit [techlighting.com](http://techlighting.com) for specific warranty limitations and details.



TURBO PATH  
shown in bronze



TURBO PATH  
shown in charcoal

### 12V AC TRANSFORMERS\*

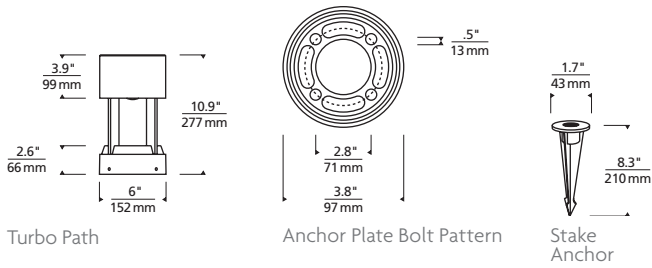
(OUTDOOR RATED, ORDERED SEPARATELY)

ITEM	DESCRIPTION	HOUSING	DIMMING
<b>700OT150T</b>	MAGNETIC, 150W, 120V	STAINLESS STEEL	MAGNETIC
<b>700OT150T277</b>	MAGNETIC, 150W, 277V	STAINLESS STEEL	MAGNETIC
<b>700OT300T</b>	MAGNETIC, 300W, 120V	STAINLESS STEEL	MAGNETIC

## ORDERING INFORMATION

700OATUR	CRI/CCT	LENGTH	LENS	FINISH	VOLTAGE	DISTRIBUTION	OPTIONS
	<b>827</b> 80 CRI, 2700K <b>830</b> 80 CRI, 3000K	<b>12</b> 12"	<b>D</b> DIFFUSE	<b>B</b> BLACK <b>Z</b> BRONZE <b>H</b> CHARCOAL	<b>12</b> 12V	<b>S</b> SYMMETRIC	<b>CONCRETE MOUNT</b> <b>ST</b> STAKE MOUNTING KIT

\*REQUIRES 12V REMOTE TRANSFORMER

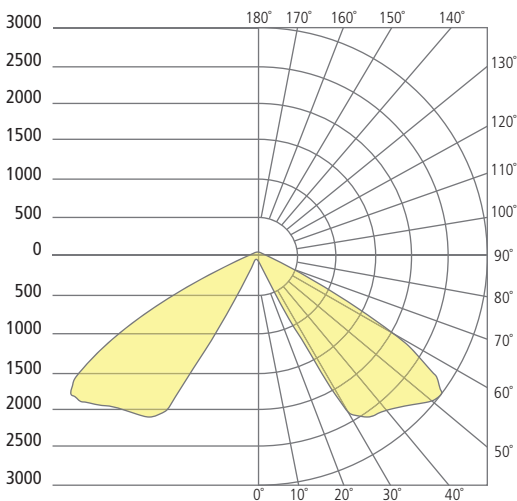


## PHOTOMETRICS\*

\*For latest photometrics, please visit [www.techlighting.com/OUTDOOR](http://www.techlighting.com/OUTDOOR)

### TURBO PATH 20°

- Total Lumen Output: 1053
- Total Power: 16.3
- Luminaire Efficacy: 64.4
- Color Temp: 3000K
- CRI: 80+
- BUG Rating: B1-U0-G0



## PROJECT INFO

FIXTURE TYPE & QUANTITY

JOB NAME & INFO

NOTES

---



---



---



---



---



---