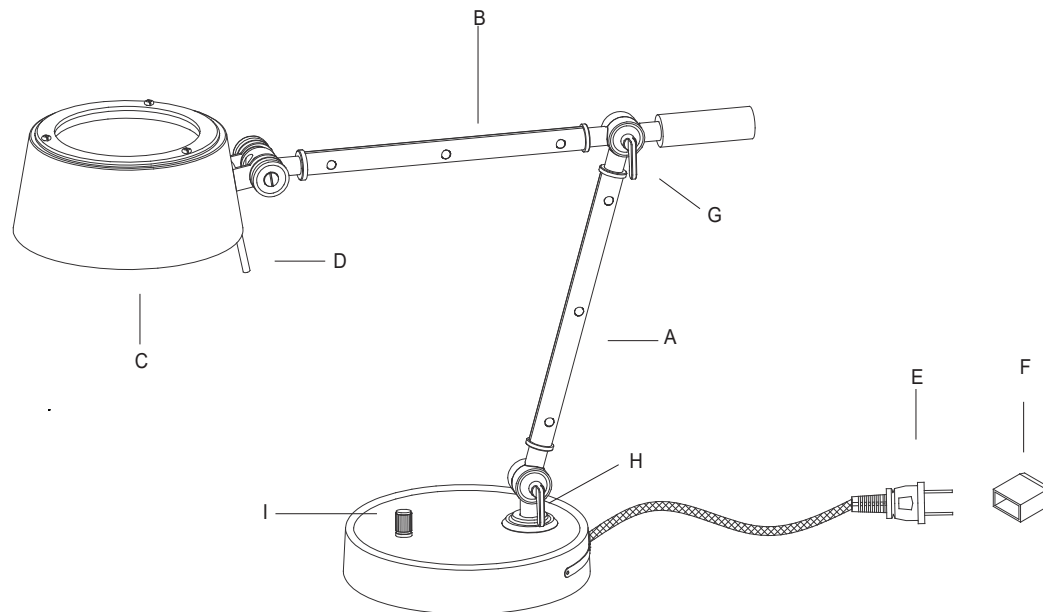


ASSEMBLY INSTRUCTIONS



Alaster Task Lamp

Item # RL 3172

NOTICE:

This light fixture should be installed in accordance with all applicable, local installation codes, and by a person familiar with the construction and operation of it, as well as the hazards involved. Inspect item and contents carefully. If any damage or defect is found, do not install. Retain all packaging material until installation is complete and approved.

1. Carefully remove all parts from the carton.
2. Loosening the adjustment knob (H) and adjust arm (A) to the desired angle then lock tight the adjustment knob (H).
3. Loosening the adjustment knob (G) and adjust arm (B) to the desired angle then lock tight the adjustment knob (G).
4. Hold the handle (D) to adjust the shade (C) to desired angle.
5. Remove the protective plug cover (F) from the plug (E).
6. Plug into a proper electrical outlet and test the fixture.
7. Turn the switch knob (I) and adjust to desired light.
8. Installation is complete.

Care Instructions: Clean only with a soft dry cloth or feather duster. Do not use abrasive or chemical agents.

RALPH LAUREN