

## OXFORD APRON FRONT STAINLESS STEEL DOUBLE BOWL FARMHOUSE KITCHEN SINK WITH ACCESSORIES



**MODEL# VGS3620BLFA**

### DIMENSIONS

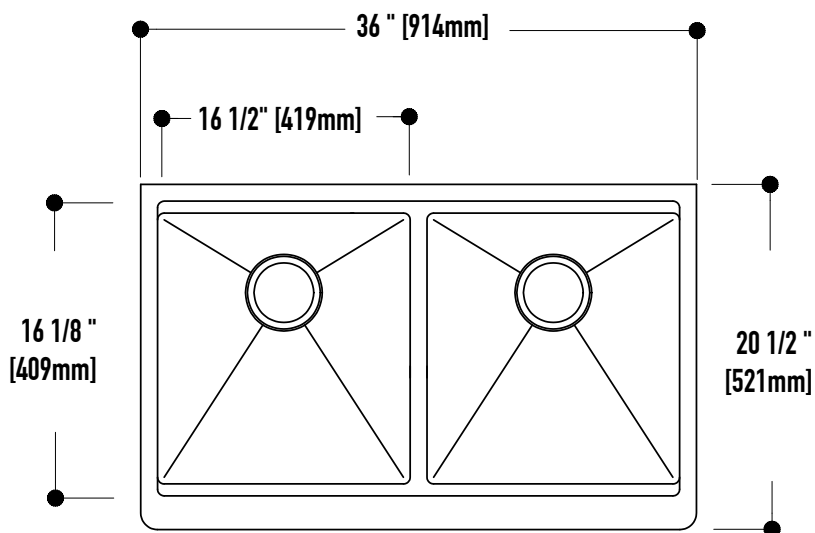
BOWL SIZE	16 1/2" x 16 1/8"
SINK DEPTH	10"
EXTERIOR	36" x 20 1/2"
GAUGE	16

### FEATURES

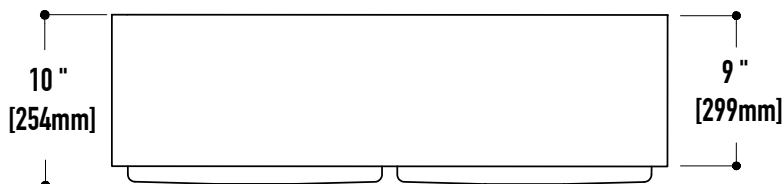
- 16 gauge, stainless steel
- 304 Stainless Steel
- Zero radius corners
- Elegant and functional drain grooves
- Long-lasting, easy-to-clean, satin finish
- Sound-muting insulation
- Rear drain placement

### PACKING LIST

- Sink
- 2 Grid
- 2 Strainer
- 2 Drain cover
- Cutting board
- Roll up drying rack



**TOP VIEW**



**FRONT VIEW**

### NOTE

These sinks are intended for indoor kitchen use only. They are not rated for outdoor use. Installation of this sink in an outdoor setting will void any warranty on this product.

<b>SINK TYPE</b>	<b>FARMHOUSE SINK</b>
------------------	-----------------------

<b>MODEL #</b>	<b>VGS3620BLFA</b>
----------------	--------------------

## GENERAL RECOMMENDATIONS

---













Read installation and maintenance instructions thoroughly before installation. Inspect your sink for any noticeable damage before installation. Check all local applicable plumbing and building codes. These instructions are based on application to composite material or solid surface countertop installation only; countertop application to stone, marble, granite or butcher-block should be referred to experienced countertop fabricator for custom installation.

VIGO Farmhouse series sinks are individually hand-crafted and VIGO suggests using experienced and professional installers only. For custom cutting of countertop and installation of the actual sink, on-site installation is also recommended. Acceptable variances are approximately 1/2 of an inch. Alignment to cut-out and precise application and trimming of any adhesive sealant are critical to a superior fit and finished look. Please take extra care in this regard.

VIGO Farmhouse series sinks require custom-ordered cabinets. Consult your cabinet dealer. VIGO does not accept any liability for damage to countertop, sink fixture, faucets or personal injury during installation. Warranty is void if installation instructions are not followed.

## TOOLS AND MATERIALS NEEDED

---

	Tape Measure		Denatured Alcohol		Wood Braces
	Pencil		Ear Protection		Framing Square
	Silicone Adhesive Sealant		Eye Protection		Shims
	Rags		Hacksaw / Jigsaw		Safety Gloves



Be sure to use proper tools and always wear personal safety accessories for your protection.

<b>SINK TYPE</b>	<b>FARMHOUSE SINK</b>
------------------	-----------------------

<b>MODEL #</b>	<b>VGS3620BLFA</b>
----------------	--------------------

## INSTALLATION OPTIONS

VIGO Farmhouse series sinks offer installation options depending on your design.

### Undermount Installation

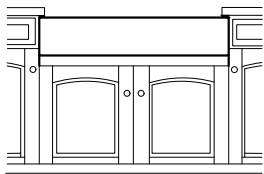


Figure 1

### Flush mount Installation

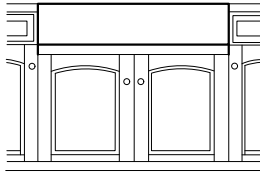


Figure 2

### Above counter Installation

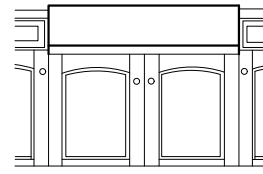


Figure 3



**CAUTION** All installation types need to allow room for faucet installation. Ensure adequate clearance behind the sink for any faucet and backsplash, as well as full range of motion for faucet spouts and handles.

Typical undermount installation with 1/4" reveal recommended

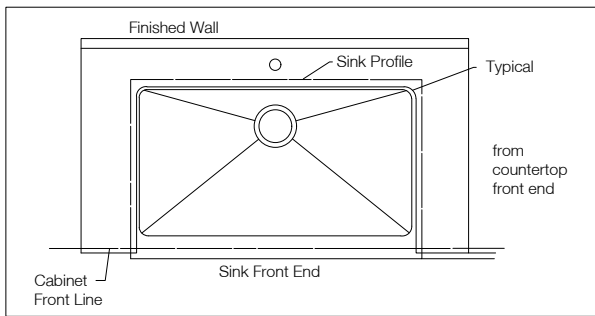


Figure 4

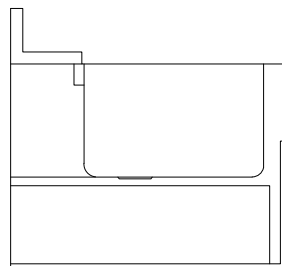


Figure 5

Typical flush mount and above counter installation.

Above counter installation may expose sink sides to be raised above the countertop

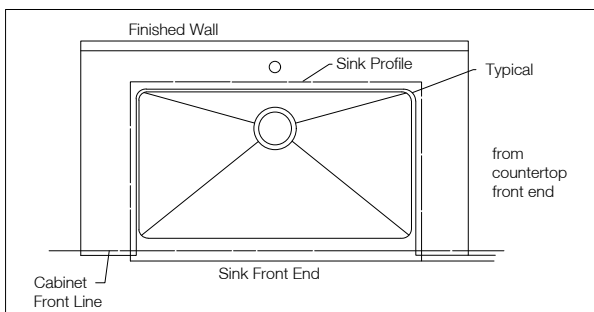


Figure 6

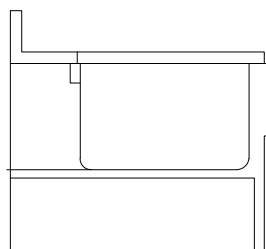


Figure 7



Contact your retailer if any product is damaged or missing prior to installation.

Never install a damaged sink, as it may void your warranty.

<b>SINK TYPE</b>	<b>FARMHOUSE SINK</b>
------------------	-----------------------

<b>MODEL #</b>	<b>VGS3620BLFA</b>
----------------	--------------------

## 1. PREPARE THE SINK BASE CABINET

---

Farmhouse sinks require custom-ordered sink base cabinets with a front cutout to accommodate a 10" deep sink. Build structural supports on the inside frame of the sink base cabinet. The structural supports must support the weight of the sink and any attachments such as garbage disposals. When the sink is placed onto the cabinet support, make sure the top of the sink is evenly flush against the bottom of the countertop. Allow clearance for water supply lines and drains or garbage disposals, as necessary.

## 2. MAKE TEMPLATE AND CUTOUT

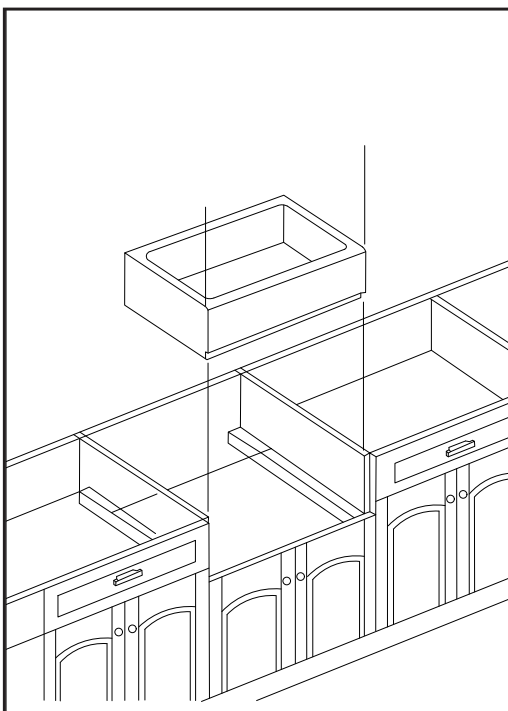
---

Depending on the installation option, make proper cutout of the countertop. VIGO recommends a 1/4" reveal on 3 sides when installed undermount style. For a flush mount or above counter installation, cut countertop along with outside of sink profile. The front end of VIGO Farmhouse sinks are designed to be installed 3/4" extended out beyond the front end of the countertop. Cut countertop accordingly. No template is provided due to the custom nature of each application and installation. The actual sink is used as the template guide for each installation. After centering the sink and allowing for faucets and backsplashes, use a pencil to outline the sinks as your guide for the cutout, allowing for any reveal before the actual cutting.

## 3. SET THE SINK

---

Set the sink on top of the cabinet or into the cabinet front cutout. Apply sealant if necessary as a gasket between the sink and cabinet.



## 4. INSTALL THE COUNTERTOP

---

Carefully clean bottom of countertop and top flange of sink with denatured alcohol. Apply bead of silicone adhesive (not supplied) around the top edge of the sink. Place countertop onto the sink. Remove excess sealant from the lip of any surfaces with a cleaner recommended by manufacture of adhesive sealant.

SINK TYPE	FARMHOUSE SINK
-----------	----------------

MODEL #	VGS3620BLFA
---------	-------------

## CARE AND MAINTENANCE

---

### ALWAYS

- ☑ Clean daily by thoroughly rinsing with a mild soap and warm water and wipe dry.
- ☑ Rub lightly with a soft cloth in the direction of grain lines on a regular basis for additional preventative cleaning.
- ☑ Keep the sink free of any standing water as this may cause a buildup of mineral deposit, which may affect the appearance of your sink.
- ☑ Remove any stubborn stains by scrubbing in the direction of the grain with a mild abrasive such as Comet.
- ☑ Rinse the sink after using any cleaning agent and wipe dry.
- ☑ Clean any mineral deposits built up over time with a mild solution of vinegar and water, followed by a thorough flushing with water.
- ☑ Remove any scratches with a Scotch-Brite pad and cleaning agent, rubbing in the direction of the grain\*.  
**\*Not recommended for mirror finish.**

---

### NEVER

- ⊗ Leave water spots, steel cookware or utensils in the sink for lengthy periods; iron particles may develop rust spots in the stainless steel surface.
- ⊗ Use a steel wool or scouring pad, as it may damage the sink surface and causes discoloration.
- ⊗ Let household cleaning agents or bleach sit in your sink for long period of time, as they may ruin the finish of your sink.
- ⊗ Leave rubber mats, sponges, or cleaning pads in the sink for long periods of time, as this may ruin the finish of your sink.
- ⊗ Use any drain cleaning products containing sulfuric acid or hydrochloric acid, as this will mar the quality of the sink.
- ⊗ Use silver cleaners on the sink's surface, as they may contain damaging acids.
- ⊗ Use the inside of the sink as a cutting surface.
- ⊗ Drop utensils, pots and pans, cookware, or other items in the sink.
- ⊗ Place hot pots or pans directly onto the sink's surface.