

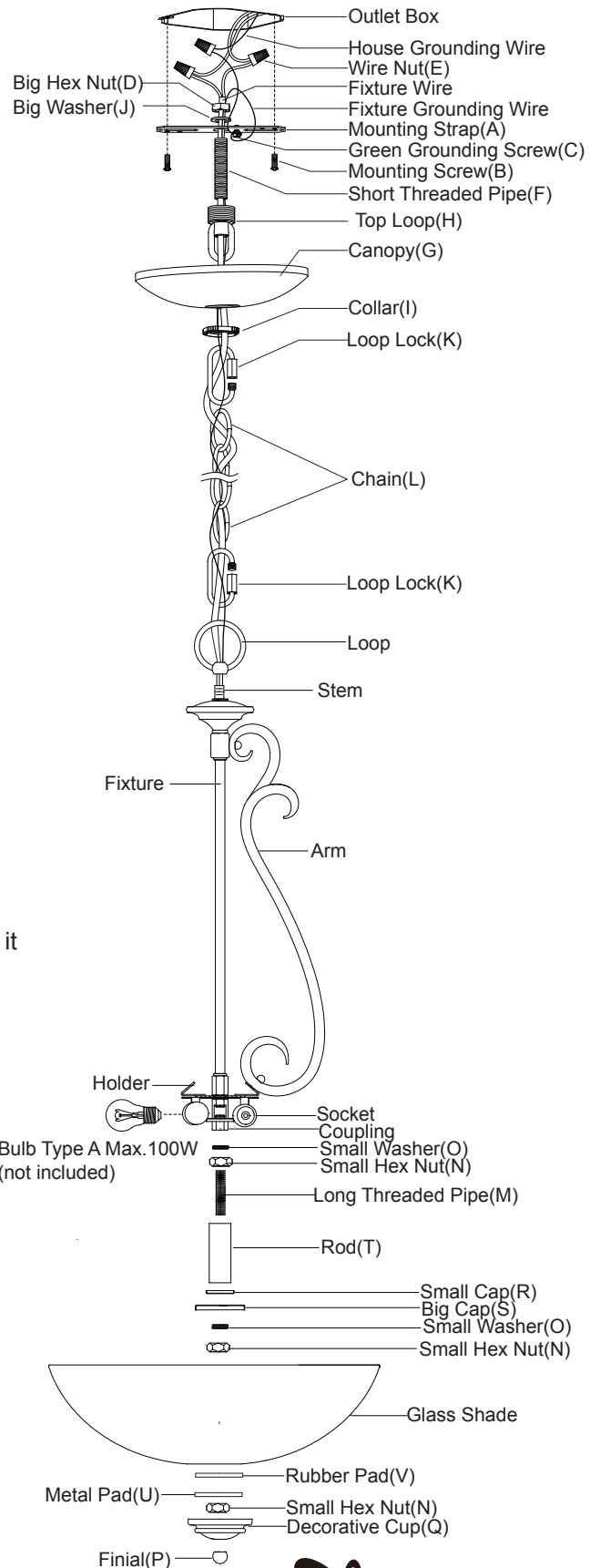
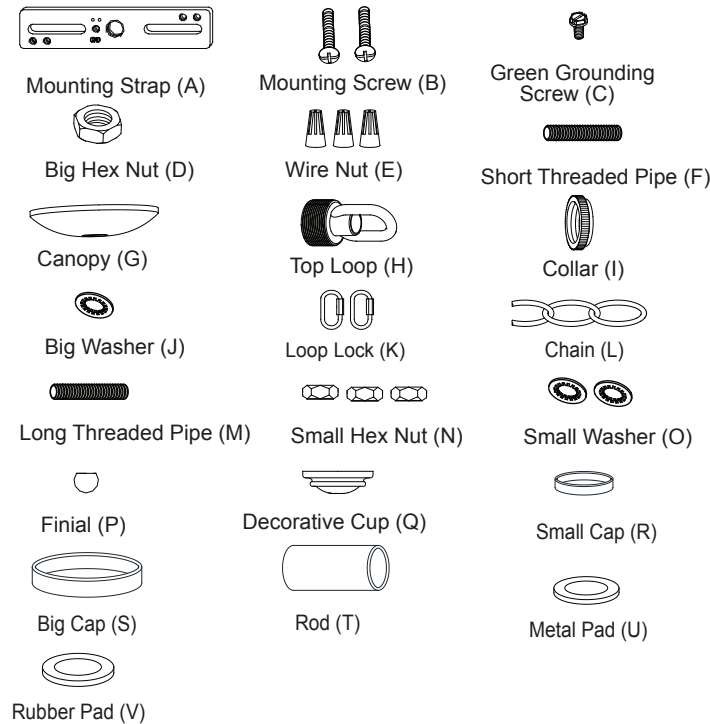
ASSEMBLY AND INSTALLATION INSTRUCTIONS

P0151 / P0152

WARNING: TO AVOID RISK OF ELECTRICAL SHOCK, BE SURE TO SHUT OFF POWER WHILE INSTALLING OR SERVICING THIS FIXTURE.

NOTES: 1. Before installing, consult local electrical codes for wiring and grounding requirements.
2. READ AND SAVE THESE INSTRUCTIONS.

Hardware Package (included):



Installation Steps

Turn off the power at fuse or circuit box.

1. Attach the short threaded pipe to the mounting strap, then secure it with a big washer and big hex nut.
2. Attach the mounting strap to the outlet box by using two mounting screws.
3. Secure the top loop to the short threaded pipe.
4. Secure the loop onto the stem of the fixture, thread fixture wires through threaded end of loop first.
5. Connect the chain:
 - Determine length of chain needed to achieve desired fixture height. (To remove excess chain section, use pliers to bend link open.)
 - Weave the fixture wires and fixture grounding wire through the chain, collar and canopy.
6. Connect one end of the chain to the loop using a loop lock.
7. Connect the other end of the chain to top loop by using the other loop lock.

VAXCEL

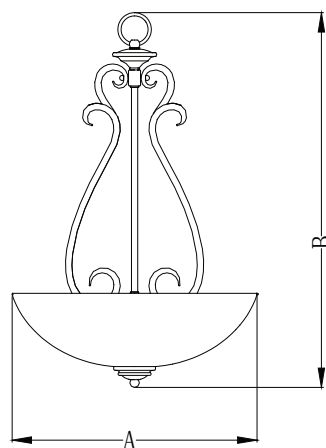
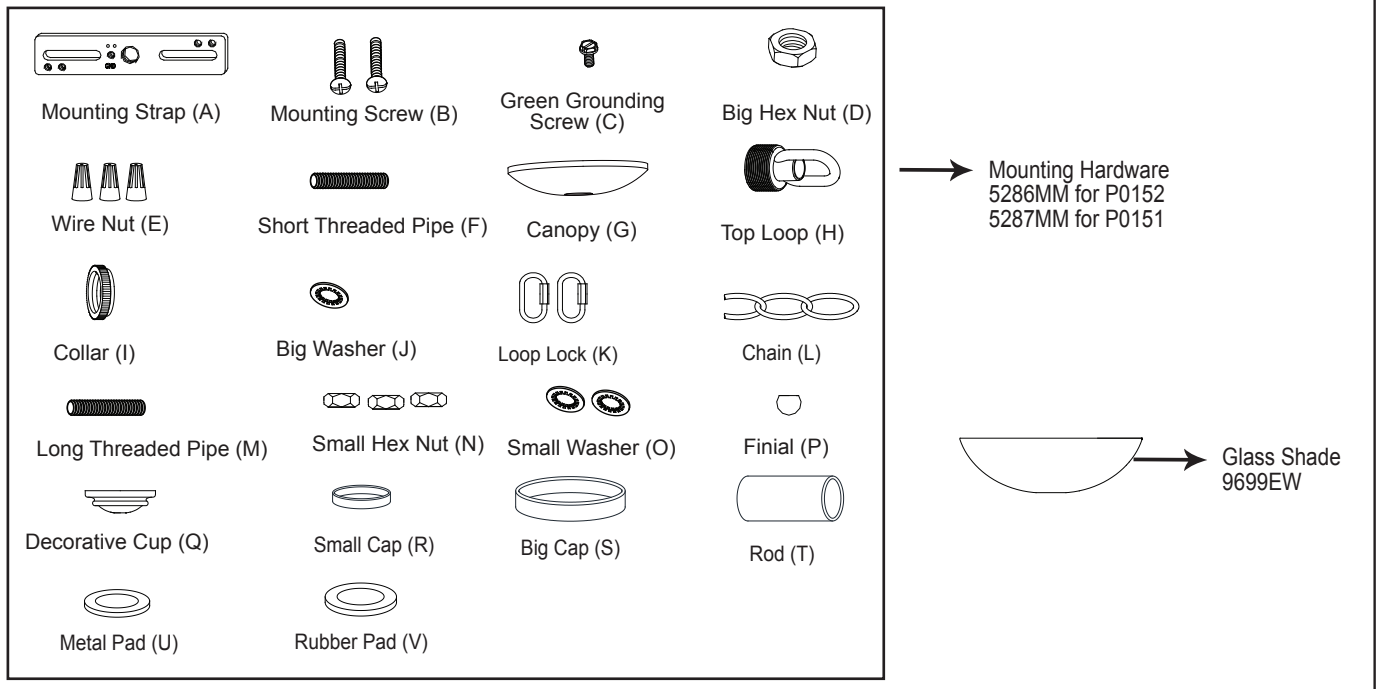
141217

8. Thread the fixture wire and fixture grounding wire through the top loop, short threaded pipe and mounting strap.
9. Pull out the source wires from the outlet box. Make wire connections using wire nuts as follows:
 - Connect the smooth-coated wire (marked) from the fixture to the black wire from the power source.
 - Connect the ribbed-coated wire (unmarked) from the fixture to the white wire from the power source.
 - Attach the fixture grounding wire to the mounting strap with the green grounding screw. Then connect it to the house grounding wire with a wire nut.
 Carefully put the wires back into the outlet box.
10. Attach the canopy to the mounting strap by inserting the top loop, then secure it with the collar.
11. Attach long threaded pipe to the coupling of the socket, and secure it with a washer and hex nut.
12. Install bulbs (not included). See relamping label at socket area or packaging for maximum allowed wattage.
13. Slip the rod, small cap with the open side facing upward and big cap with the open side facing downward up through long threaded pipe, secure them with a small washer and small hex nut.
14. Slip the glass shade up through long threaded pipe and secure it with a rubber pad, metal pad and hex nut. Slide the decorative cup up to glass shade, and secure it with the finial.

Turn on the power at fuse or circuit box.

The following parts are available for re-order if damaged or missing.

Spare Parts List:



A: Ø15-3/4"

B: 23-1/4"