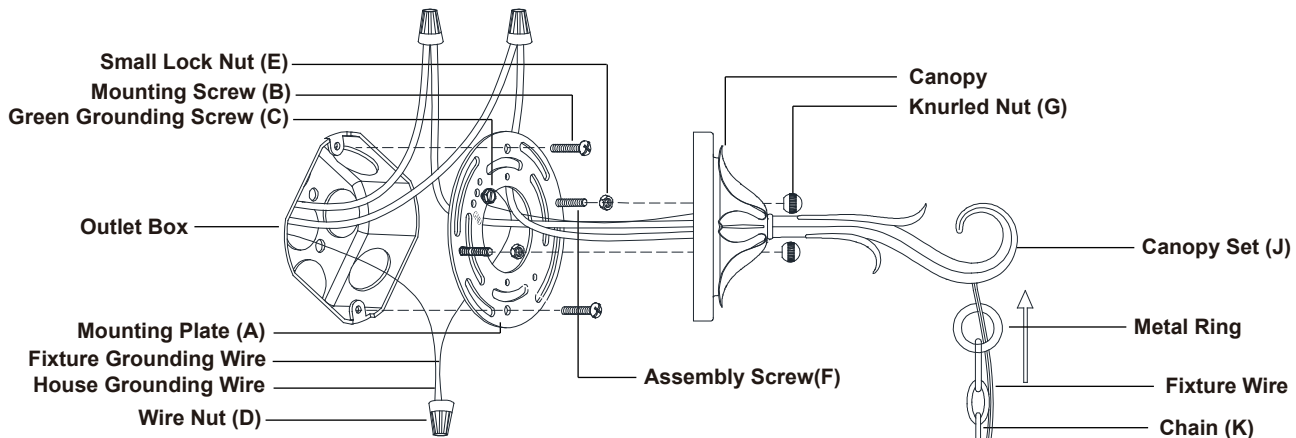


ASSEMBLY AND INSTALLATION INSTRUCTIONS

W0105

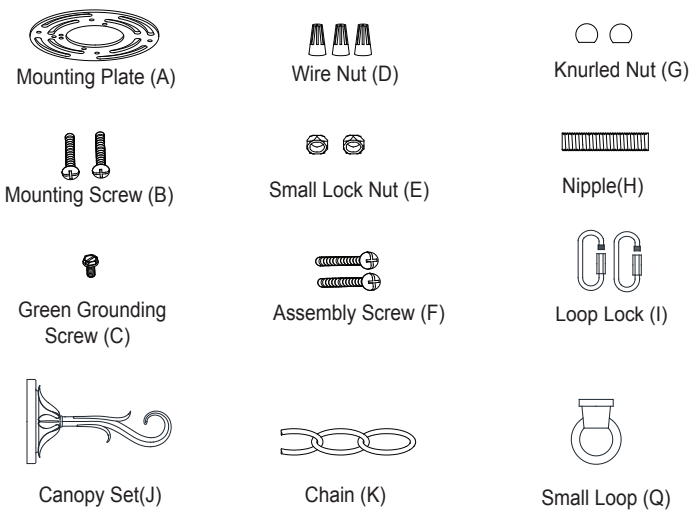
WARNING: BE SURE TO SHUT OFF POWER AT THE MAIN FUSE OR CIRCUIT BREAKER BOX BEFORE INSTALLING OR SERVICING THIS FIXTURE.

**NOTE: 1. Before installing, consult local electrical codes for wiring and grounding requirements.
2. READ AND SAVE THESE INSTRUCTIONS.**

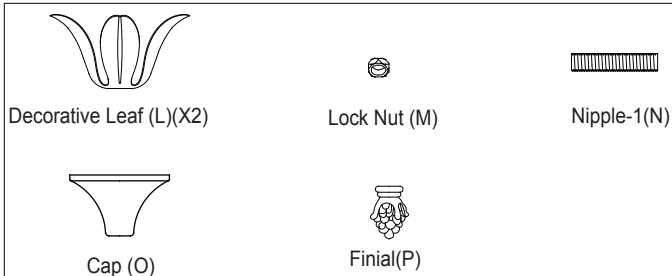


Parts:

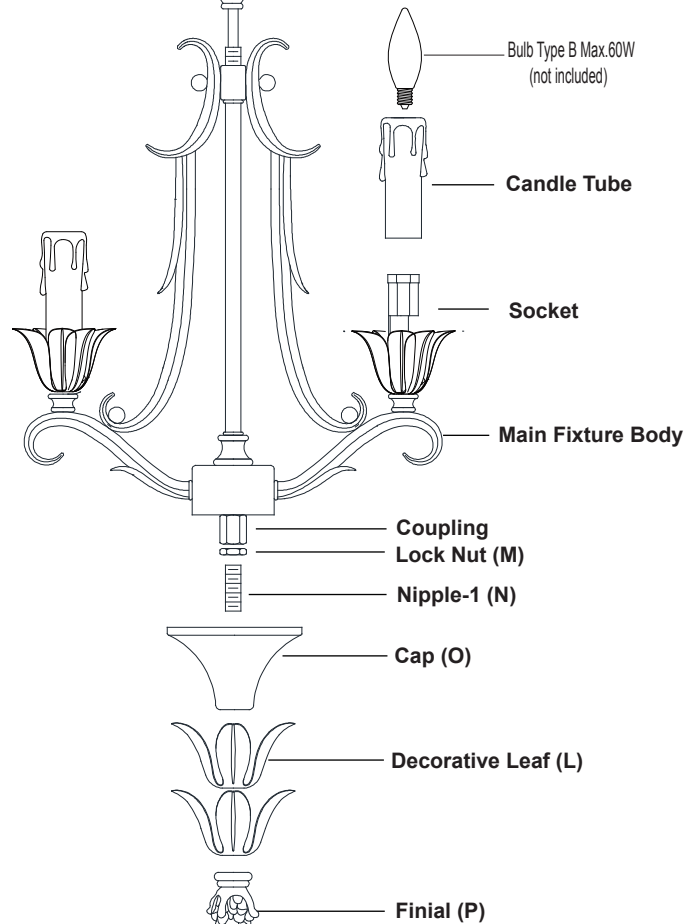
Parts Number (5034MM)



Parts Number (5041AA)



Parts Number (5036BB)



For Wall Light:

1. Thread two assembly screws through the mounting plate, and secure them with two small lock nuts. Adjust the length of the assembly screws if necessary.
Note: Make sure that the assembly screws are lined up horizontally, to ensure that the fixture will be level.

2. Attach the mounting plate to the outlet box by using two mounting screws.
3. Screw the nipple-1 into the coupling on main fixture body. Secure it with a lock nut. Slide the cap and decorative leaves onto the nipple-1, thread the finial onto the nipple-1.

Note: The decorative leaves must be staggered.

4. Attach the candle tube into the socket on the main fixture body. Secure the loop to the center body.
5. Hang the fixture to the canopy set. Take out the chain and a loop lock from the hardware package. Choose the length of the chain you need, then connect one end of the chain with the center body by using a loop lock. Hook the metal ring of one end of the chain onto one end of the canopy set.
6. Cut the redundant wires, leaving only 8 " length of wires from the bottom of the canopy. Split fixture wire into two strands. Then strip off 3/4 " of outer plastic insulation.
7. Pull out the outlet wires and the house grounding wire from the outlet box. Make wire connections by using the wire nuts:

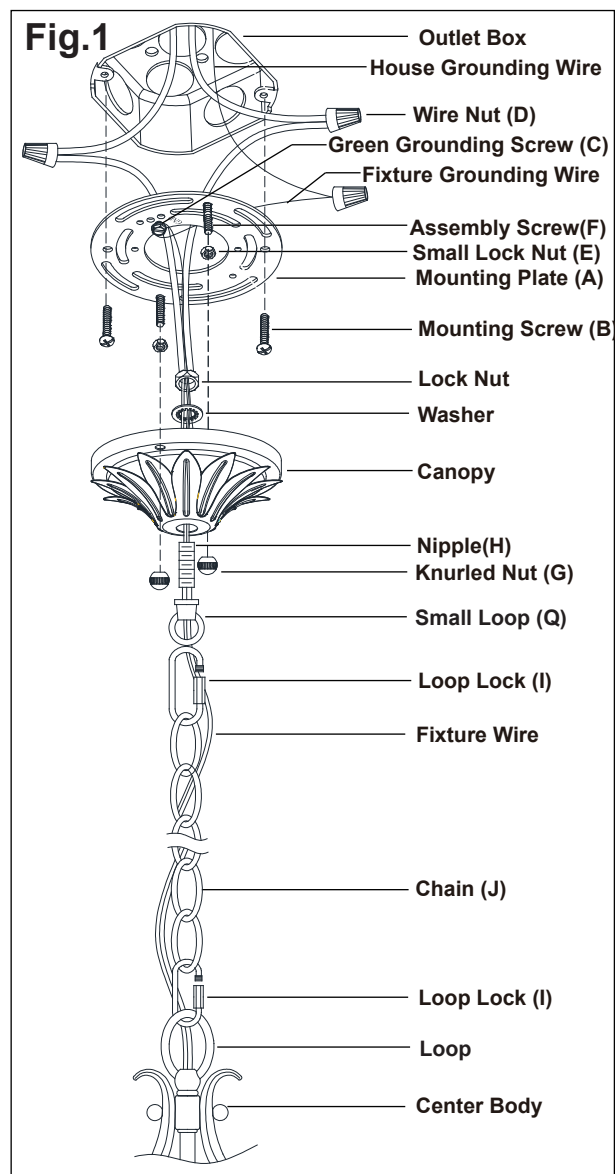
---The smooth wire (marked) from the fixture to the black wire from the power source.

---The ridged wire (unmarked) from the fixture to the white wire from the power source.

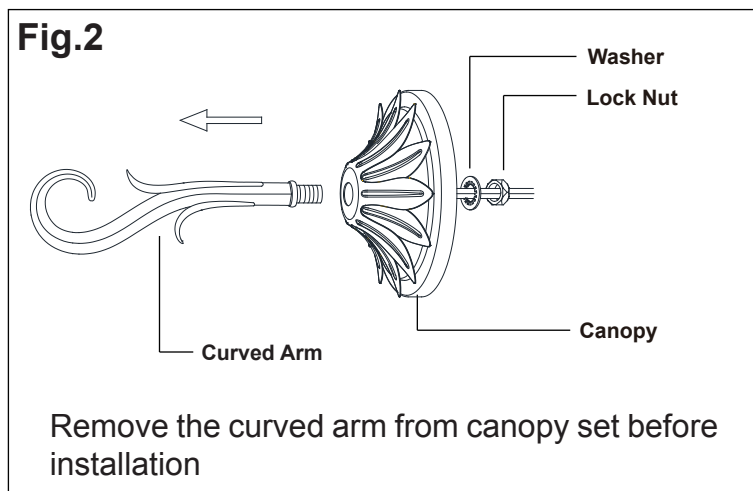
---Attach the fixture grounding wire to the mounting strap with the green grounding screw. Then connect it to the house grounding wire with a wire nut.

Carefully put the wires back into the outlet box.

8. Attach the canopy set to the mounting plate by inserting the assembly screws, then secure it with two knurled nuts.
9. Install bulbs (not included). See relamping label at socket area or packaging for maximum allowed wattage.
10. Turn on the power at the main fuse or circuit breaker box.

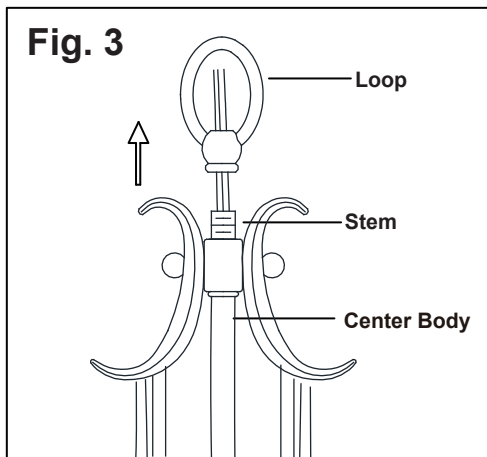


For Chandelier: (See Fig.1 & Fig. 2)

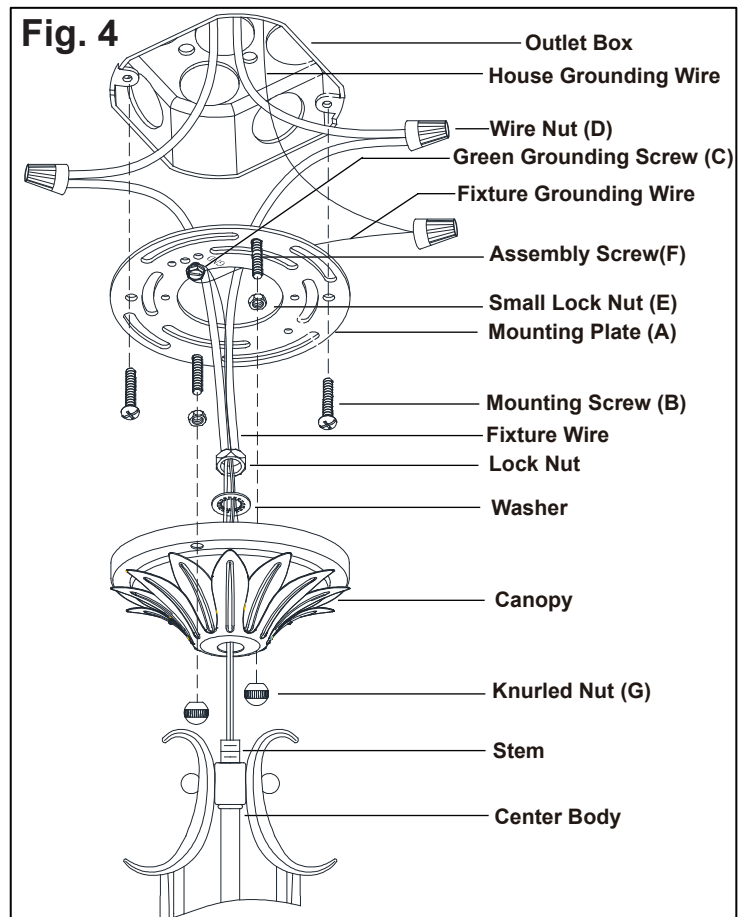


1. Take out the canopy set. Unsecure the lock nut and washer, pulling out the wires from the canopy set and removing the curved arm from the canopy set. (See Fig 2)
2. Weave the fixture wires through the center body, loop, chain (every 4th to 5th loop), small loop, canopy, nipple, washer and lock nut. Attach the small loop to canopy, secure it with nipple, washer and lock nut.
3. Thread two assembly screws through the mounting plate, and secure them with two small lock nuts. Adjust the length of the assembly screws if necessary.
4. Attach the mounting plate to the outlet box by using two mounting screws.
5. Follow step 3~4 as For Wall Light.
6. Choose the length of the chain you need, Then connect one end of the chain with the loop by using the loop lock.
7. Connect the other end of the chain with the small loop by using the loop lock.
8. Cut the redundant wires if necessary. Pull out the outlet wires and the house grounding wire from the outlet box. Make wire connections by using the wire nuts:
 - The smooth wire (marked) from the fixture to the black wire from the power source.
 - The ridged wire (unmarked) from the fixture to the white wire from the power source.
 - Attach the fixture grounding wire to the mounting strap with the green grounding screw. Then connect it to the house grounding wire with a wire nut.
 Carefully put the wires back into the outlet box.
9. Attach the canopy to the mounting plate by inserting the assembly screws, then secure it with two knurled nuts.
10. Install bulbs(not included). See relamping label at socket area or packaging for maximum allowed wattage.
11. Turn on the power at the main fuse or circuit breaker box.

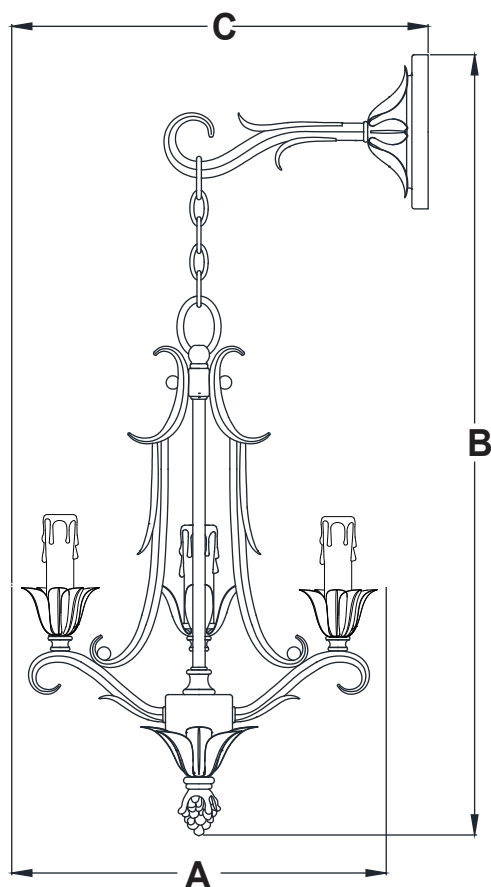
For Semi-Flush: (See Fig.3 & Fig.4)



1. Take out the canopy set. Unsecure the lock nut and washer, pulling out the wires from the canopy set and removing the curved arm from the canopy set. (See Fig 2)
2. Remove the loop from the stem of the center body. (See Fig 3) Then slip the canopy through the wires and stem, secure it with the washer and lock nut. (See Fig 4)
3. Thread two assembly screws through the mounting plate, and secure them with two small lock nuts. Adjust the length of the assembly screws if necessary.



4. Attach the mounting plate to the outlet box by using two mounting screws.
5. Follow step 3~4 as For Wall Light.
6. Cut the redundant wires if necessary. Pull out the outlet wires and the house grounding wire from the outlet box. Make wire connections by using the wire nuts:
 - The smooth wire (marked) from the fixture to the black wire from the power source.
 - The ridged wire (unmarked) from the fixture to the white wire from the power source.
 - Attach the fixture grounding wire to the mounting strap with the green grounding screw. Then connect it to the house grounding wire with a wire nut.Carefully put the wires back into the outlet box.
7. Attach the canopy to the mounting plate by inserting the assenbly screws, then secure it with two knurled nuts.
8. Install bulbs(not included). See relamping label at socket area or packaging for maximum allowed wattage.
9. Turn on the power at the main fuse or circuit breaker box.



A: 10"

B: 20-3/4"

C: 11-1/2"