

ASSEMBLY AND INSTALLATION INSTRUCTIONS

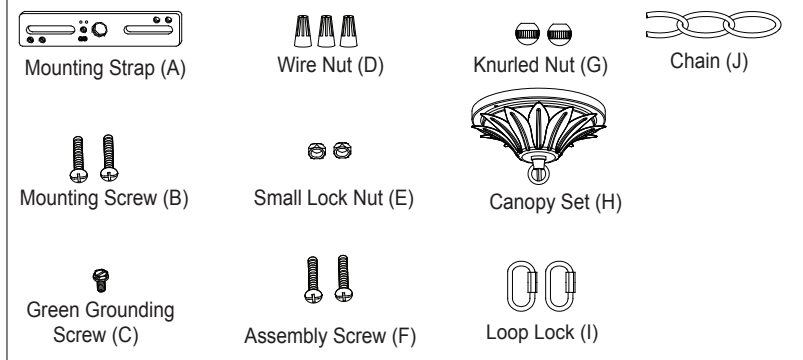
H0110

WARNING: BE SURE TO SHUT OFF POWER AT THE MAIN FUSE OR CIRCUIT BREAKER BOX BEFORE INSTALLING OR SERVICING THIS FIXTURE.

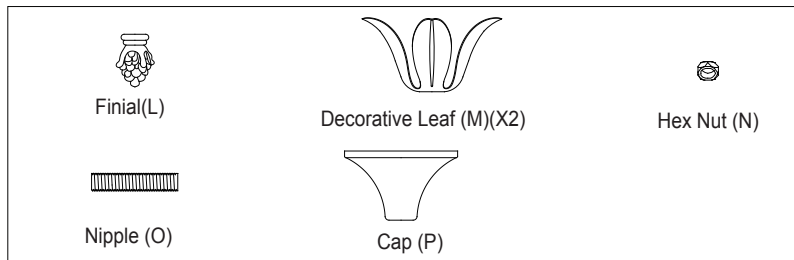
**NOTE: 1. Before installing, consult local electrical codes for wiring and grounding requirements.
2. READ AND SAVE THESE INSTRUCTIONS.**

Parts:

Parts Number (5020MM)



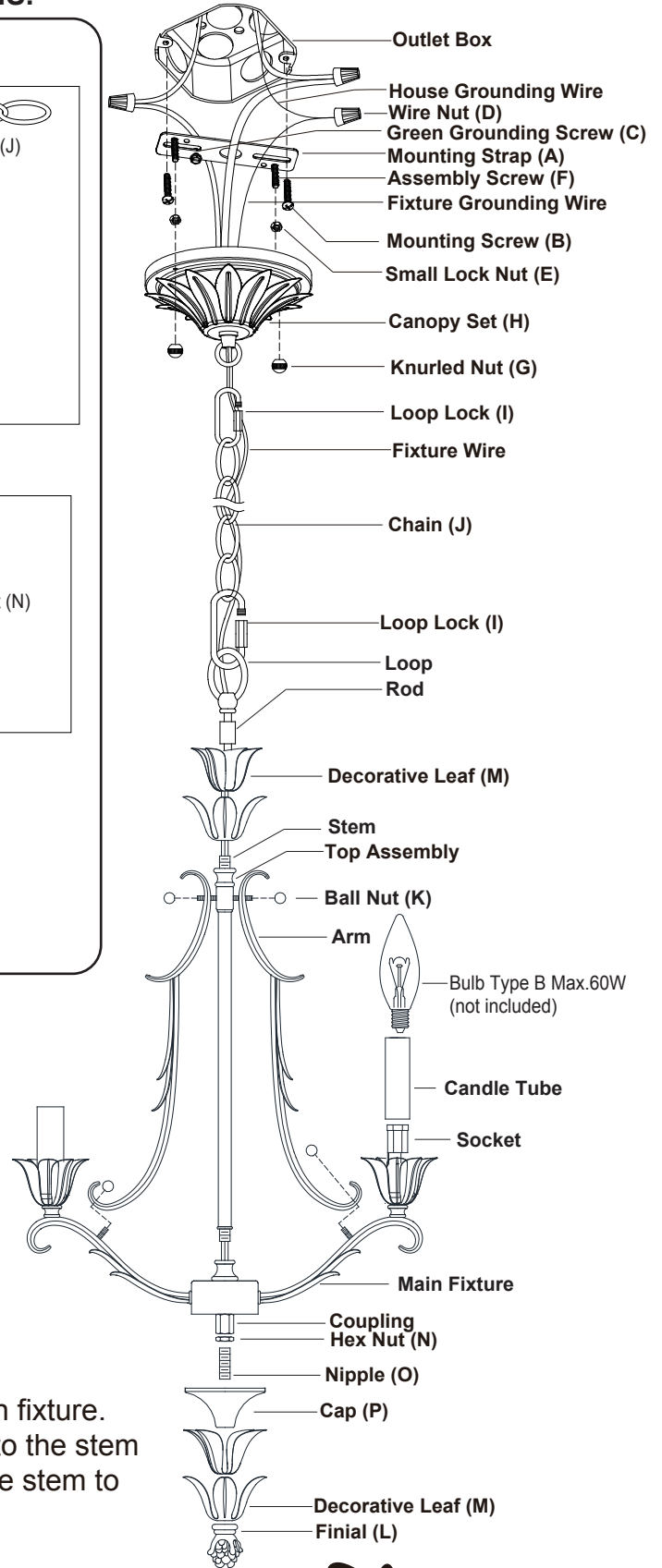
Parts Number (5027AA)



Parts Number (5024BB)



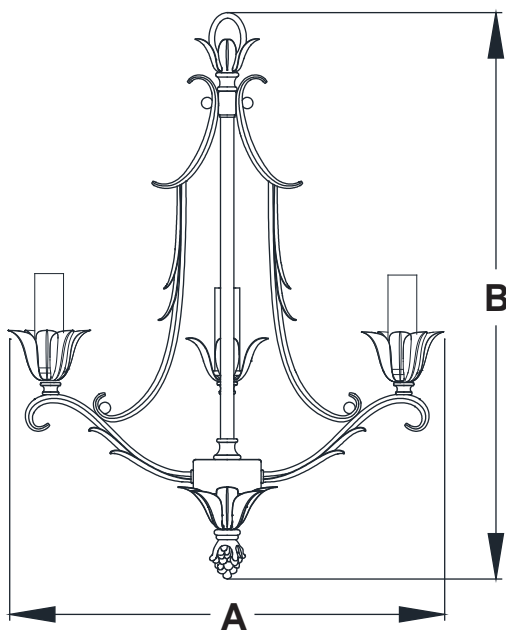
1. Thread two assembly screws through the mounting strap, then secure them with two small lock nuts. Adjust the length of the assembly screws if necessary.
2. Attach the mounting strap to the outlet box by using two mounting screws.
3. Attach the rod and decorative leaf onto stem of top assembly, thread the loop onto stem of top assembly as shown. Screw top assembly into main fixture, pull any excess cord through top assembly.
4. Remove the ball nuts from top assembly and main fixture. Attach the arms to the stem in top assembly and to the stem of main fixture as shown. Thread ball nuts onto the stem to secure arms.



 **VAXCEL**

140307

5. Choose the length of the chain you need, then weave the fixture wire and the fixture grounding wire through the chain and canopy set.
6. Connect one end of the chain with the loop by using a loop lock.
7. Connect the other end of the chain with the small loop of the canopy set by using another loop lock.
8. Pull out the outlet wires and house grounding wire from the outlet box. Make wire connections using the wire nuts:
 - The smooth wire (marked) from the fixture to the black wire from the power source.
 - The ridged wire (unmarked) from the fixture to the white wire from the power source.
 - Attach the fixture grounding wire to the mounting strap with the green grounding screw. Then connect it to the house grounding wire with a wire nut.Carefully put the wires back into the outlet box.
9. Attach the canopy set to the mounting strap by inserting the assembly screws, then secure it with two knurled nuts.
10. Attach the candle tube into the socket on the main fixture body.
11. Install bulbs (not included). See relamping label at socket area or packaging for maximum allowed wattage.
12. Screw the nipple into the coupling on main fixture. Secure it with hex nut. Slide the cap and decorative leaves onto the nipple, thread the finial onto the nipple.
Note: The decorative leaves must be staggered.
13. Turn on the power at the main fuse or circuit breaker box.



A: 14"

B: 20-1/2"