

**WARNING**

**DISCONNECT POWER BEFORE RELAMPING OR WIRING THE FIXTURE.
READ ALL INSTRUCTIONS COMPLETELY BEFORE STARTING INSTALLATION.**

**CAUTION**

- **TO AVOID THE RISK OF FIRE OR SHOCK, FIXTURE MUST BE INSTALLED IN COMPLIANCE WITH ALL APPLICABLE NATIONAL AND LOCAL ELECTRICAL/BUILDING CODES.**
- **INSTALLATION AND MAINTENANCE OF THIS UNIT REQUIRES AN ELECTRICIAN OR CERTIFIED FACTORY TRAINED TECHNICIAN.**
- If an existing fixture is being replaced, remove it and note to which of the wires in the outlet box the fixture was attached. **DO NOT SEPARATE ANY OTHER WIRES THAT MAY BE IN THE BOX. DO NOT DAMAGE THE INSULATION OF OLDER WIRING.** In regular circumstances the **BLACK** wire will be the "Hot" lead wire and the **WHITE** wire will be the "Neutral" or "Common" lead wire. A **GREEN** or **BARE COPPER** wire is the "Ground". In older buildings it is always good practice to reconfirm the polarity of the wiring.

NOTICE

- The important safeguards and instructions outlined on this sheet cannot cover all possible conditions and situations that may occur. It must be understood that common sense, caution and care are factors that cannot be built into any product. Caution and care must be supplied by the person(s) installing, operating and caring for this lighting fixture.
- This fixture is designed to be mounted on a correctly installed standard round or octagon box or a through outlet box with a plaster frame. The box must be securely mounted to the structure of the building. The mounting bar and hardware supplied should be used. Directly mounting the fixture to the outlet box may make it impossible to correctly align the fixture.
- **NOTE:** For your safety be certain that the circuit breakers controlling outdoor lighting and equipment are GFI breakers.

FIXTURE PREPARATION

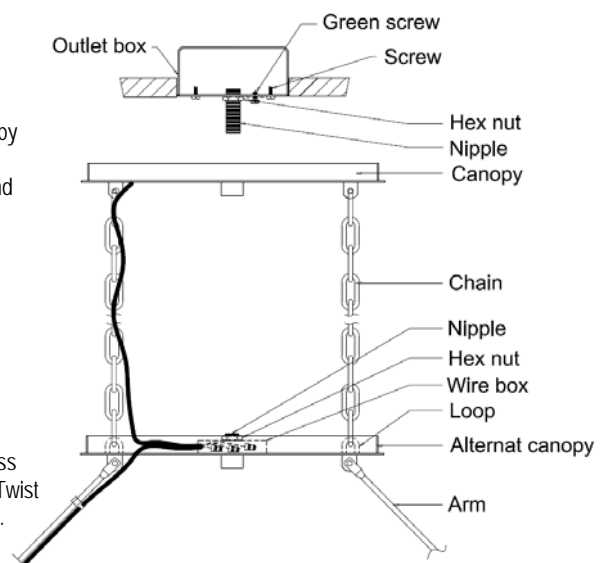
1. Remove the fixture, parts and parts bag(s) from the carton.

NOTICE:

Before discarding the carton, double check to make certain that all parts are found.

FIXTURE INSTALLATION

1. Thread the 2 mounting screws into the 1-piece bar . (The green screw is in the front). Attach the 1-piece bar to the outlet box. Then thread the nipple into the crossbar and the hex nut onto the nipple.
2. Open the top links of chain and attach the chain to the canopy. Place the canopy onto the 1-piece bar and against the ceiling. Adjust the screws so that 1/4" of threads on the screws extend beyond the canopy. Then remove the canopy and tighten the hex nut against the crossbar.
3. Determine the overall desired length of the fixture. Remove excess chain. Hang the fixture on the chain (Be certain that wiring holes on canopy and the alternate canopy should be at the same side). Close the bottom link of chain.
4. Thread the wires up through alternating links of the chain and the hole on canopy to the outlet box.
5. When the ceiling is reached, measure 6" beyond the chain and cut off the excess wire. Separate the leads and strip of approx. 1/2" of insulation from each lead. Twist the strands of wire together. Push the leads and ground wire up to the outlet box.

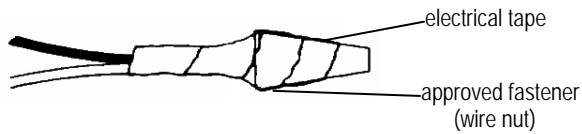


6. Fasten the ground wire to the green or bare copper wire in the outlet box or to the green screw on the crossbar.

⚠ WARNING
Never fasten the ground wire to the black or "hot" wire!
Failure to follow this instruction could result in serious injury or death!

7. Thread the wires up through alternating links of the chain and the hole on canopy to the outlet box. Fasten the wires together with an approved fastener (wire nut). Starting about 1' below the fastener, tightly wrap the connection with electrical tape so that the connection seals the end of the fastener.

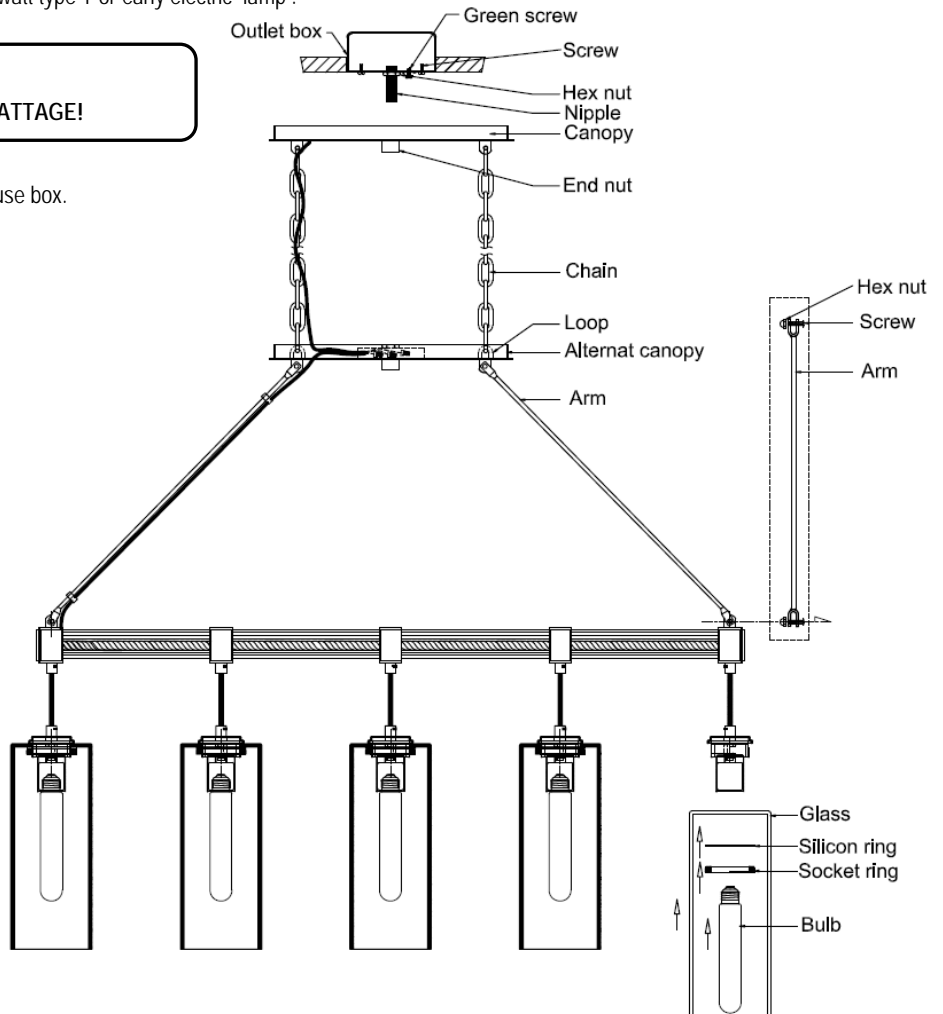
⚠ WARNING
Make sure that there is no exposed wire or strands that could cause a dangerous short circuit!



- 8. Connect the black fixture lead wire to the black wire in the outlet box. Fasten the joined wires as in step 7.
- 9. Install the arms to the fixture, using the screw and hex nut to fix it, then install the fixture and chain together.
- 10. Using the end nut, fasten the canopy to the ceiling.
- 11. Place the glass and the silicon ring on the socket and lock on with the socket ring.
- 12. Install the lamps (light bulbs).
NOTE: This fixture is rated for Max 75 watt type T or early electric lamp.

⚠ WARNING
DO NOT EXCEED RECOMMENDED WATTAGE!

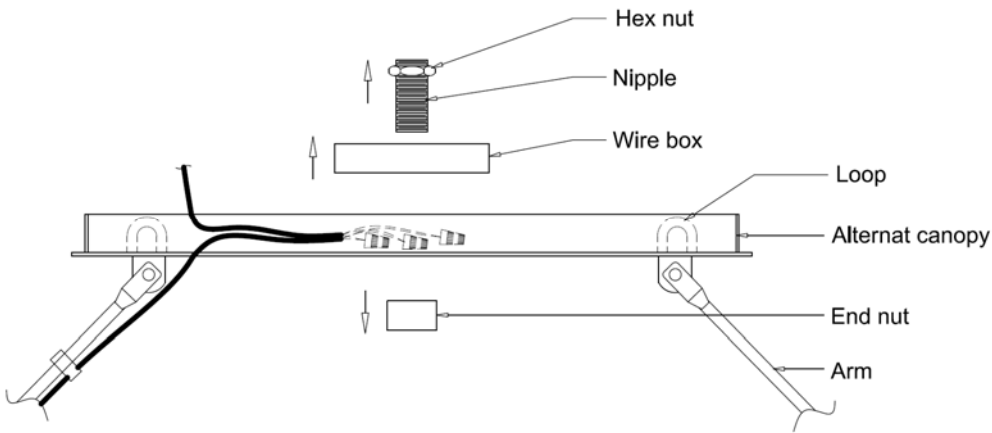
13. Restore power to circuit at breaker or fuse box.



SEMIFLUSH INSTALLATION

FIXTURE PREPARATION

1. Open the bottom links of chain. Remove the chain away from the alternate canopy.
2. Unscrew the end nut and remove the wire box away from the alternate canopy.
3. Measure 6" of lead wire and ground beyond the end of the canopy. Cut off excess wire. Strip the insulation off the ends of the leads exposing approx. 1/2" of wire.



FIXTURE INSTALLATION

1. Attach the 1-piece bar to the outlet box. (The green screw should face the floor). Thread the nipple into the one-piece bar and tighten the hex nut.
2. Thread the hex nut onto the nipple and the nipple into the 1-piece bar. Place the canopy onto the 1-piece bar and against the ceiling. Adjust the screws so that 1/4" of threads on the screws extend beyond the alternate canopy. Tighten the hex nut against the 1-piece bar.
3. Install the arm to the fixture, using the screw to fix it. Thread the wires up to the outlet box. Clips the wires on the blade bar. Complete the wiring following steps 6 through 7 above.
4. Mount the alternate canopy onto the ceiling using end nut.
5. Install the lamps (light bulbs) same as step 12 above.
6. Restore power to circuit at breaker or fuse box.

