

System Parts:

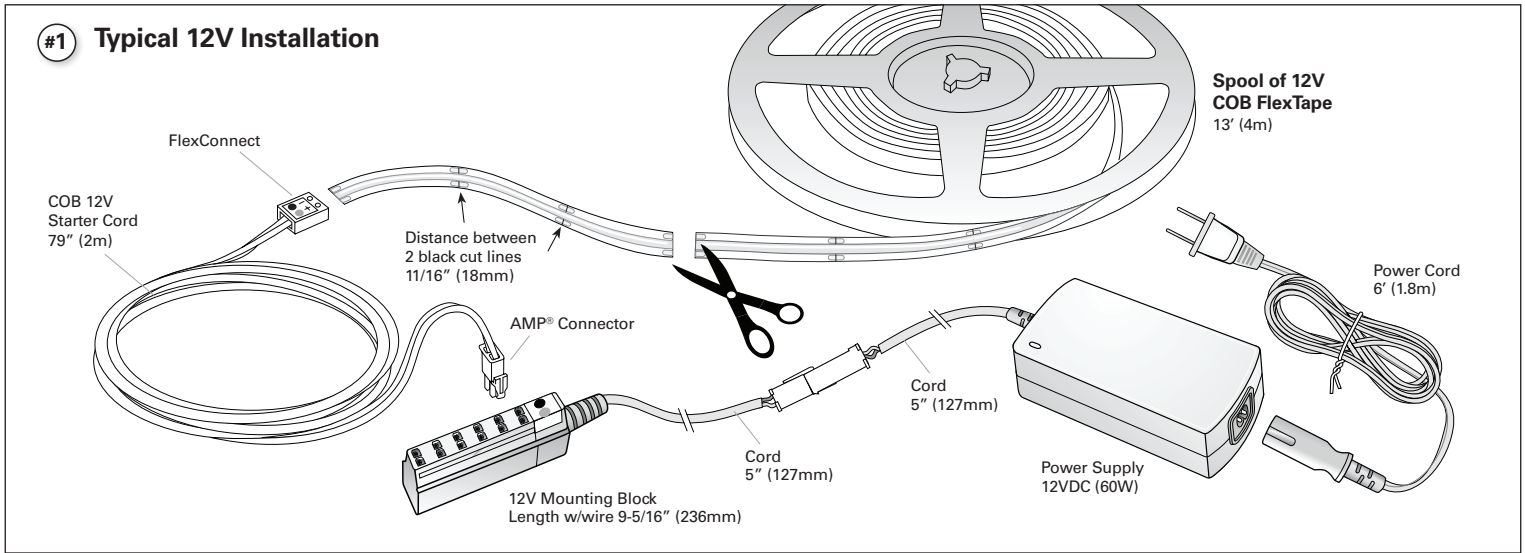
- (1) Spool of COB LED FlexTape (12V) 13 ft (4m) P/N: L-FLXCOB12-XV-1
- (1) Spool of COB LED FlexTape (24V) 16.4 ft (5m) P/N: L-FLXCOB24-XU-1
- (1) Power Supply, Class 2: 12VDC 60W max, or 24VDC 96W max
- (1) COB 12V Starter Cord 79" (2m) P/N: L-LED-TPEPKT-2M
- (1) COB 24V Starter Cord 79" (2m) P/N: L-24B2SPKT-2M-1

Accessories (purchased separately): Touch On/Off Switch, Round Switch, Roll Switch, Remote Control LED Dimmer, and Jumper Cords (various lengths).

Installation Instructions

C.O.B. LED FlexTape Light

12VDC 4.4W/ft. and 24VDC 5.5W/ft.



READ ALL INSTRUCTIONS BEFORE INSTALLING SYSTEM.
Before beginning installation, be sure power is turned OFF to light system.

Tresco® Lighting's COB (Chip-On-Board) LED FlexTape light system is designed to adhere to a smooth, clean surface (indoor locations only).

NOTATIONS to help determine installation layout:

- Maximum linear run from one Starter Cord of 12V COB FlexTape is 13' (4m); of 24V COB FlexTape is 16.4' (5m).
- For additional linear runs, you must use a new Starter Cord connected to the Mounting Block or 5-Output Barrel Splice.
- Up to (6) Starter Cords can connect to one Mounting Block, or (5) Starter Cords to one 5-Output Barrel Splice.
- Maximum length of COB FlexTape on all runs from a single 12V/60W Power Supply is 13.6' (4.1m); and from a 24V/96W Power Supply is 17.4' (5.3m).
- Minimum linear run is one 'unit', which is the length between two black cut lines. For 12V tape, this is 11/16" (18mm) (see Fig. 1), and 24V tape is 1-1/2" (38mm) (see Fig. 2).
- Tresco's COB FlexTape can be used with any Class 2, 12VDC/60W or 24VDC/96W Power Supply. As an option, Tresco® Class 2, 12VDC & 24VDC Power Supplies are available:

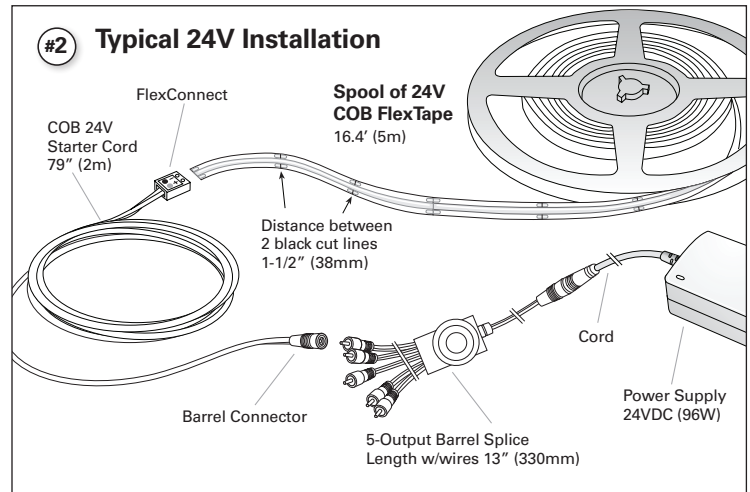
- 12VDC/60W max. part no.: L-DC-SLELT60-1, and
- 24VDC/96W max. part no.: L-24VDCELT96-1

For more Power Supply options, see Tresco® Specifications Catalog.

Installing the COB FlexTape light system:

Roughly lay out the lighting system before installation to verify final positioning of all components. See separate instruction sheets for additional information on Power Supplies.

Use insulated staples and/or plastic ties to secure ALL cords throughout the installation.



12V SYSTEM:

1. Mount 12VDC Power Supply with screws provided (keep Power Supply in an accessible location). Do not turn power on to light system yet. Mount the 12V Mounting Block with insulated staples or plastic ties.
 2. Connect Power Supply to Mounting Block (see Fig. 1).
 3. Plug COB 12V Starter Cord into Mounting Block.
- NOTE: the red dot (+) and black dot (-) on the AMP® connector must match-up with the red and black dots on the Mounting Block to maintain proper polarity.

Proceed to Step 4 on page 2.

24V SYSTEM:

1. Mount 24VDC Power Supply with screws provided (keep Power Supply in an accessible location). Do not turn power on to light system yet. Mount 24V 5-Output Barrel Splice with insulated staples or plastic ties.
2. Connect Power Supply to 5-Output Barrel Splice (see Fig. 2).
3. Connect COB 24V Starter Cord to 5-Output Barrel Splice.

Proceed to Step 4 on page 2.

Installation Instructions

C.O.B. LED FlexTape Light

12VDC 4.4W/ft. and 24VDC 5.5W/ft.

(Continued from page 1)

Installing the COB LED FlexTape:

4. Route the Starter Cord so the FlexConnect is positioned exactly where you want the FlexTape to begin. Then mount the Starter Cord.

Note: When mounting the FlexConnects make sure they are always facing up away from the surface, so you have access to the hex screws (see Figs. 3 & 5).

5. Cut FlexTape to length. Use the black lines on the FlexTape as a guide to cut the tape, but slightly back off of the black line and make your cut to give maximum surface area for the contacts (see Fig. 4). Note: cutting anywhere else but on the contacts will damage the FlexTape. Do NOT cut on soldered joints.

6. Before inserting the FlexTape into the FlexConnect, peel off approximately 1" (25mm) of backing from the FlexTape. Insert one end of the FlexTape into the FlexConnect on the Starter Cord, aligning the FlexTape's two end contacts to the hex screws in the FlexConnect. After seated, tighten hex screws with a 1.5mm hex key (allen wrench). Tighten firmly, but do not over tighten (see Fig. 5).

IMPORTANT: The polarity of the two contacts on the FlexTape and FlexConnect should match-up (+) to (+) and (-) to (-). See markings on FlexTape and FlexConnect. If needed, rotate the FlexTape section 180° to match polarity (+) and (-) (see Fig. 3).

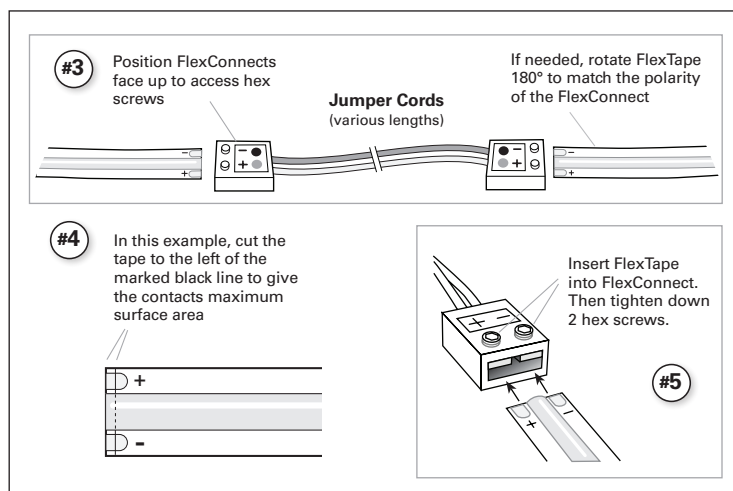
7. If you continue the FlexTape run using Jumper Cord(s), attach the FlexConnect of the Jumper Cord to the loose end of the FlexTape section. Again match-up (+) and (-).

Continue to link Jumper Cords to FlexTape sections until all links are made in the run.

8. After all links are completed to the FlexTape run, peel off the rest of the backing from the FlexTape sections exposing the adhesive side of the tape. Position the tape on any smooth, flat surface (cabinet, shelf, etc.) and firmly rub down on the OUTSIDE EDGES of the tape, do NOT push down on the LEDs. The tape should firmly adhere to clean surfaces that are smooth and clear of oil, grease, dust or dirt.

Note: The 3M™ adhesive is pressure sensitive tape. Pressure must be applied in order for proper adhesion to take place. Not intended for rough or raised surfaces.

9. To add more FlexTape runs from a new Starter Cord, repeat the steps above.
10. Double-check all connections and then turn power on to light system.



IMPORTANT SAFETY INSTRUCTIONS

CAUTION: To reduce the risk of fire, electric shock, or injury to persons:

- NOT intended for outdoor use or where exposed to excessive moisture.
- FlexTape is very flexible, but CANNOT be kinked or creased or the internal contacts may break.
- Use proper Class 2, Power Supply for the lighting system – e.g. 12VDC Power Supply with 12V FlexTape; and 24VDC Power Supply with 24V FlexTape.
- Use only insulated staples or plastic ties to secure cords.
- Route and secure cords so that they will not be pinched or damaged when the cabinet is pushed to the wall.
- NOT intended for use in enclosed or recessed installations, such as in ceilings, soffits or walls.
- Do not run line voltage power supply cord through holes in walls, ceilings, floors or similar permanent structure.
- If required, a licensed electrician should be consulted for wiring through permanent structures. When mounting and wiring light system, follow all local electric codes and the National Electrical Code (NEC).
- Disconnect electrical power before cutting light or modifying system.
- Individual LEDs cannot be replaced. Instead replace entire FlexTape section.

This light is intended to be used as cabinet fixtures on metal, wood, particle board or other structurally sound, heat-resistant surface. Care should be taken during and after installation to avoid contact of light with wiring, cord, or any combustible material.

Save these instructions for future reference.
For technical assistance, call 1-800-227-1171

tresco lighting

Tresco Lighting by Rev-A-Shelf
12400 Earl Jones Way
Louisville, KY 40299

Tel: 800-227-1171
Fax: 502-491-2215

Email: cservice@trescolighting.com
Web: www.trescolighting.com

