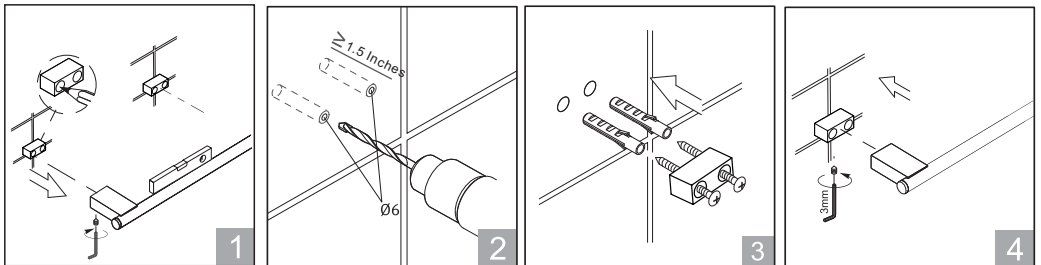
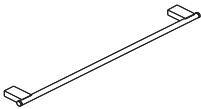
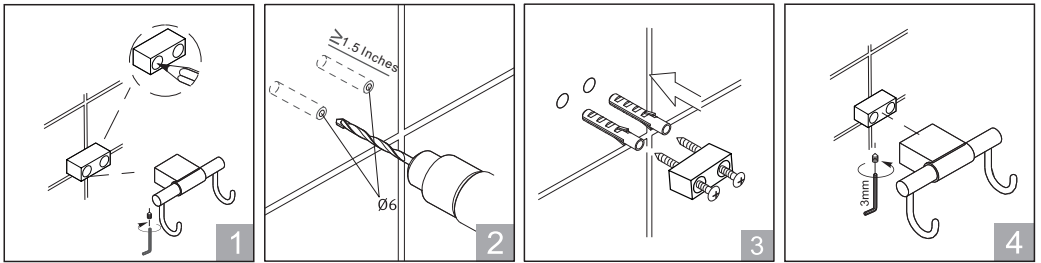
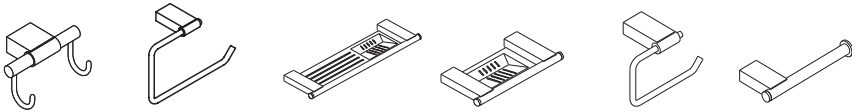


Instruction Manual



Cleaning

Only clean and dry the surface with mild-cleanser and soft-cloth.

Never use rough sponges, abrasives, ammonia, bleach or solvent based cleaners.

It is recommended to clean the surface periodically for a lucid surface.

Residues of liquid soaps, shampoos and shower foams can also cause damage, so rinse with clean water after using. The damage of already damaged surfaces will deteriorate under the effect of the cleansers. Components with a damaged surface must be exchanged, otherwise there could be an injury danger.