

WALL MOUNT

Assembly Instructions

MODEL#: 70523



CAUTION

•Inspect the wire insulation for any cuts, abrasions, or exposed copper that may have resulted during shipping. If there is a defect in the wire, do not attempt installation.

•Before starting installation of this fixture or removal of a previous fixture, disconnect the power by turning off the circuit breaker or by removing the fuse at the fuse box.

TOOLS REQUIRED



Ladder



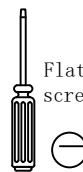
Safety glasses



Electrical tape



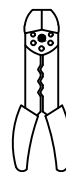
Phillips screwdriver



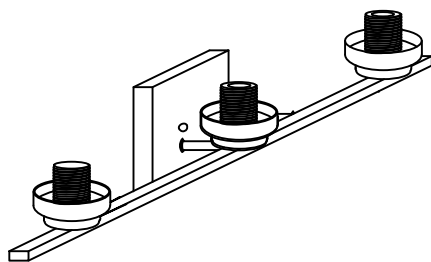
Flat blade screwdriver



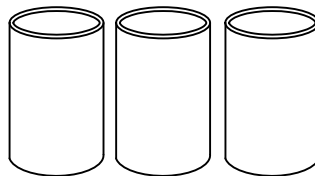
Pliers



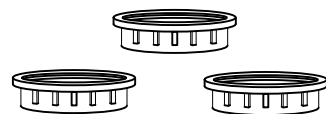
Wire strippers



Fixture



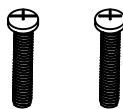
Glasses



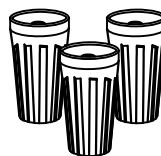
Lamp holder rings



Mounting Unit



Mounting Screws



Wire Nuts



Cap Nuts

*PARTS SHOWN MAY DIFFER SLIGHTLY PER LIGHT FIXTURE

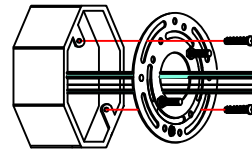
WALL MOUNT

Assembly Instructions

MODEL#: 70523

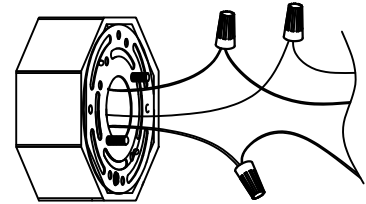
STEP 1

Use the mounting screws to attach the mounting unit to the junction box



STEP 2

Make the electrical connection from the junction box to the fixture. Connect the ground wire to the mounting unit using the preinstalled green ground screw. Then, connect the positive, negative and ground wires with the supplied wire nuts. Secure with electrical tape

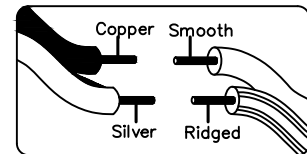


Connect Clear, Brown, Gold or Black Parallel Wire without tracer (round & smooth) or Black Fixture Wire to:

Connect Clear, Brown, Gold or Black *Parallel Wire with tracer (square & ridged) or White Fixture Wire to:

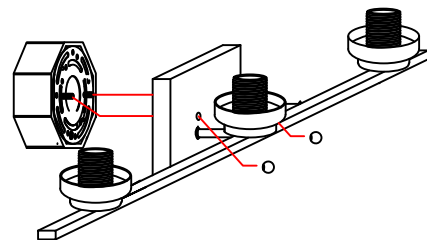
Black or Red Supply Wire or Insulated Wire (other than green) with copper conductor.

White Supply Wire or Insulated Wire (other than green) with silver conductor



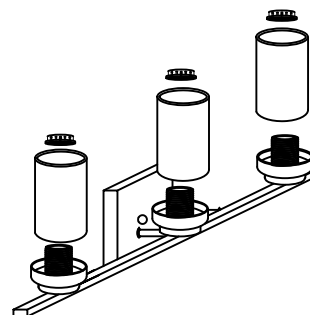
STEP 3

Place the canopy over the mounting unit and secure the fixture with the cap nuts.



STEP 4

Install Glasses to the fixture by lampholder ring



STEP 5

Install bulb (Not Included)
Type A E26 60W*3

